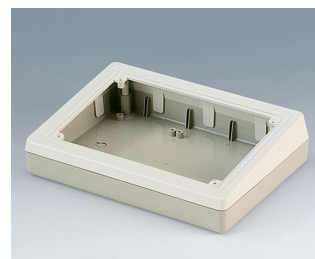


# DESK CASES

## Practical sloping front desktop enclosures

These plastic enclosures are suitable for indoor applications in many different fields of electronics. Choose a case that will fully meet your requirements in terms of size and inclination of the control panel.

- desk cases with inclined operating area
- suitable for numeric keypads and membrane keyboards
- useful range of five different models
- prepared for the assembly of eurocards 100 x 160 mm (types 138/190/190F/190H)
- front panel versions are available for the installation of complete prefabricated electronic assemblies
- connector mounting panel (types 220 & Combi F/H)
- version with attachment for digital readouts, measuring equipment, encoders etc. (Combi Desk Case H)
- protection class IP 40
- wall suspension element as accessory
- internal screw pillars for PCBs etc.



### [View Customizing Options](#)

What do you still need for your own very personal product? We can supply enclosures and tuning knobs with all necessary modifications for fitting your electronic components.  
Customizing options for Desk Cases

# DESK CASES



Machining



Lacquering



Printing



Laser marking



Decor foils



Special material



RFI/EMI shielding



Installation / Assembly  
of accessories

## Select Versions



**A0514007**  
DESK CASE 138  
ABS (UL 94 HB)  
off-white RAL 9002  
5.43"x7.48"x2.13"



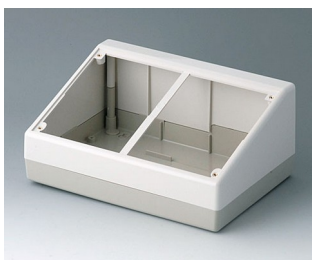
**A0514009**  
DESK CASE 138  
ABS (UL 94 HB)  
black RAL 9005  
5.43"x7.48"x2.13"



**A0519007**  
DESK CASE 190  
ABS (UL 94 HB)  
off-white RAL 9002  
7.48"x5.43"x1.85"



**A0519009**  
DESK CASE 190  
ABS (UL 94 HB)  
black RAL 9005  
7.48"x5.43"x1.85"



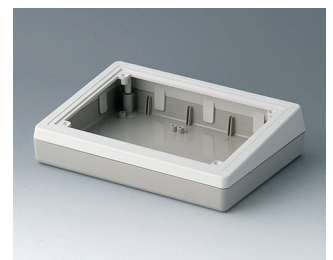
**A9082065**  
DESK CASE 220  
ABS (UL 94 HB)  
off-white RAL 9002  
8.66"x6.14"x3.94"



**A9084165**  
COMBI DESK CASE F  
ABS (UL 94 HB)  
off-white RAL 9002  
8.98"x8.50"x2.99"

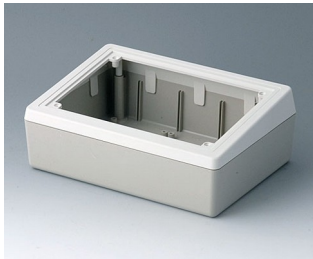


**A9085165**  
COMBI DESK CASE H  
ABS (UL 94 HB)  
off-white RAL 9002  
8.98"x8.50"x4.96"



**A9086265**  
DESK CASE 190 F  
ABS (UL 94 HB)  
pebble gray RAL 7032  
7.48"x5.43"x1.85"

# DESK CASES



**A9086365**  
DESK CASE 190 H  
ABS (UL 94 HB)  
off-white RAL 9002  
7.48"x5.43"x2.76"

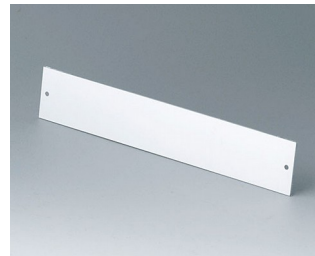
## Accessory to complete



**A9180001**  
Front panel 220  
Aluminum  
matt anodized  
8.09"x5.09"x0.06"



**A9184001**  
Front panel  
Aluminum  
matt anodized  
7.87"x5.12"x0.06"

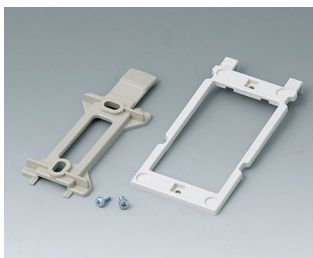


**A9185001**  
Front panel  
Aluminum  
matt anodized  
7.87"x1.38"x0.06"

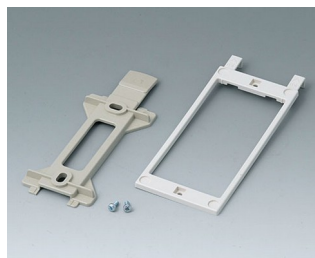


**A9186001**  
Front panel 190 F/H  
Aluminum  
matt anodized  
6.36"x4.17"x0.06"

## Accessory "wall/holder"



**B1350048**  
Wall suspension elements  
ABS (UL 94 HB)  
pebble gray RAL 7032



**B1360048**  
Wall suspension elements  
ABS (UL 94 HB)  
pebble gray RAL 7032

## Accessory "screws"



**A0306031**  
Self-tapping screws 0.118" x  
0.236" (PZ1)

# DESK CASES

## Accessory



A9210290  
Anti-slide feet 0.374" x 0.150"  
transparent

Subject to technical modification without notice. © by OKW Gehäusesysteme, Buchen/Germany.