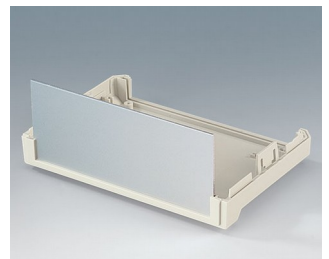
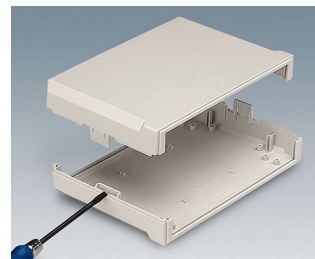
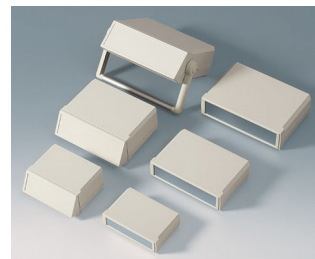


MOTEC

Modern desktop enclosures with wide front panels

With its generous dimensions, stylish design and ergonomic control panels, our MOTEC series is designed to distinguish your electronics from more conventional systems.

- stylish range of instrument enclosures
- three plan sizes
- different case heights for individual configurations
- high-quality material ABS (UL 94 HB)
- robust clip-together assembly to minimize your assembly work
- access with flat screwdriver only, for security
- ergonomic, molded sloping control panel with recessed area for a membrane keypad
- aluminum panels ordered separately
- versions with handle for ergonomically tilted position or carrying
- four non-slip self-adhesive feet included
- protection class IP 40
- internal guide grooves for the vertical insertion of partitions and PCBs
- internal screw pillars for PCBs etc.



MOTEC

Applications and Examples

- Measuring and control technology
- Feedback control
- Peripheral devices and interfaces, switchboxes, modems
- Laboratory equipment
- Medical and wellness devices



Rhinospirometer



Telemetry system with cordless sensors

View Customizing Options

What do you still need for your own very personal product? We can supply enclosures and tuning knobs with all necessary modifications for fitting your electronic components. Customizing options for Motec



Machining



Lacquering



Printing



Laser marking



Decor foils



Special material



RFI/EMI shielding



Installation / Assembly
of accessories

MOTEC

Select Versions



B3015117
MOTEC S, flat/flat
ABS (UL 94 HB)
off-white RAL 9002
6.10"x4.13"x1.57"
IP 40



B3015127
MOTEC S, flat/high
ABS (UL 94 HB)
off-white RAL 9002
6.10"x4.13"x2.56"
IP 40



B3015137
MOTEC S, high/high
ABS (UL 94 HB)
off-white RAL 9002
6.10"x4.13"x3.54"
IP 40



B3020117
MOTEC M, flat/flat
ABS (UL 94 HB)
off-white RAL 9002
8.07"x5.51"x1.97"
IP 40



B3020127
MOTEC M, flat/high
ABS (UL 94 HB)
off-white RAL 9002
8.07"x5.51"x2.95"
IP 40



B3020137
MOTEC M, high/high
ABS (UL 94 HB)
off-white RAL 9002
8.07"x5.51"x3.94"
IP 40



B3020147
MOTEC M, with handle bar
ABS (UL 94 HB)
off-white RAL 9002
8.07"x5.51"x2.95"
IP 40



B3023117
MOTEC-L, flat/flat
ABS (UL 94 HB)
off-white RAL 9002
9.25"x6.50"x2.36"
IP 40



B3023127
MOTEC L, flat/high
ABS (UL 94 HB)
off-white RAL 9002
9.25"x6.50"x3.35"
IP 40



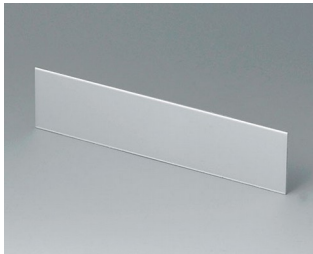
B3023137
MOTEC L, high/high
ABS (UL 94 HB)
off-white RAL 9002
9.25"x6.50"x4.33"
IP 40



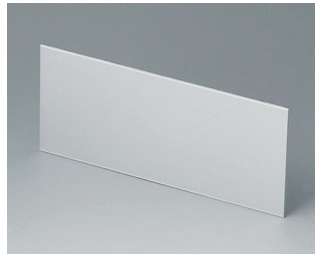
B3023147
MOTEC L, with handle bar
ABS (UL 94 HB)
off-white RAL 9002
9.25"x6.50"x3.35"
IP 40

MOTEC

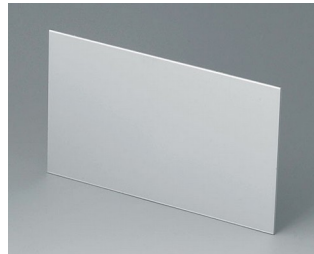
Accessory to complete



B3115100
Front / rear panel S
Aluminum
matt anodized
5.35"x1.26"x0.06"



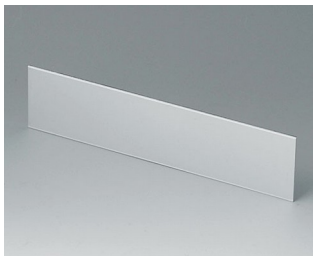
B3115110
Front / rear panel S
Aluminum
matt anodized
5.35"x2.24"x0.06"



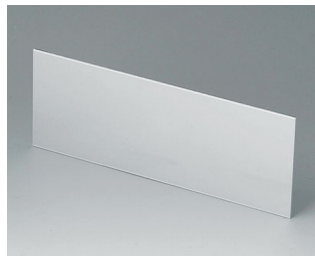
B3115120
Front / rear panel S
Aluminum
matt anodized
5.35"x3.23"x0.06"



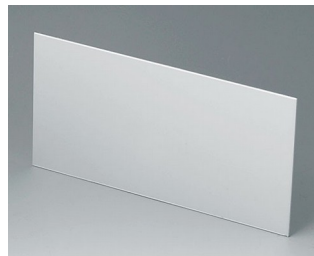
B3115167
Sloping control panel S, flat/high
ABS (UL 94 HB)
off-white RAL 9002



B3120100
Front / rear panel M
Aluminum
matt anodized
7.28"x1.65"x0.06"



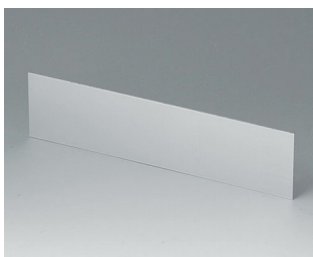
B3120110
Front / rear panel M
Aluminum
matt anodized
7.28"x2.64"x0.06"



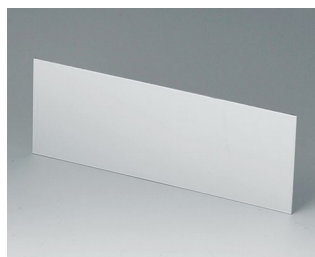
B3120120
Front / rear panel M
Aluminum
matt anodized
7.28"x3.62"x0.06"



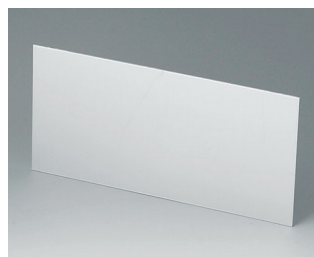
B3120167
Sloping control panel M, flat/high
ABS (UL 94 HB)
off-white RAL 9002



B3123100
Front / rear panel L
Aluminum
matt anodized
8.43"x2.05"x0.06"



B3123110
Front / rear panel L
Aluminum
matt anodized
8.43"x3.03"x0.06"



B3123120
Front / rear panel L
Aluminum
matt anodized
8.43"x4.02"x0.06"



B3123167
Sloping control panel L, flat/high
ABS (UL 94 HB)
off-white RAL 9002



B3123177
Sloping control panel L,
high/high
ABS (UL 94 HB)
off-white RAL 9002

MOTEC

Accessory "screws"



A9199008
Set of screws

Subject to technical modification without notice. © by OKW Gehäusesysteme, Buchen/Germany.