



## EASYTEC

Wall-mounted enclosure for  
the integration of smart sensors

HIGHLIGHTS OF THIS ISSUE:

## SMART-CONTROL

The first standard enclosure for  
easy installation in room corners



## IMPRINT

### Magazine

INSIDE – the OKW Customer Magazine

### Publisher

Odenwälder Kunststoffwerke Gehäusesysteme GmbH  
Friedrich-List-Str. 3, 74722 Buchen, Germany  
Tel. +49 (0) 62 81 404-00  
Fax +49 (0) 62 81 404-144  
E-Mail [Info@okw.com](mailto:Info@okw.com)  
Web [www.okw.com](http://www.okw.com)

### Management

Dipl.-Betriebswirtin (BA) Yvonne Ellwanger,  
Dipl.-Ing. Christoph Schneider

### Editors

Lisa Binninger, Shirin Ham, Oliver Herrlich

### Graphics

Lisa Binninger, Shirin Ham

### Print

Laub GmbH & Co. KG, D-74834 Elztal-Dallau

### Graphics & photos

Odenwälder Kunststoffwerke Gehäusesysteme GmbH  
Fotostudio Respondek, D-74722 Buchen, Germany  
Adobe Stock photos

### Issue

May 2020

Reprinting and duplication, even excerpts, only with  
the permission of the publisher.

# DEAR READER

In the latest issue of our customer magazine INSIDE, we will introduce you to our newest product groups SMART-CONTROL and EASYTEC.

SMART-CONTROL is the first enclosure for easy installation in room corners. The housing can also be mounted on the wall or on a desktop in an ergonomically inclined position. Two different versions allow you to choose your design with or without a control panel or a membrane keypad.

Another focus in this issue is EASYTEC. Our new range of wall-mounted enclosures was specially developed to integrate smart sensors in the IoT and IIoT. Ideal for rugged indoor and outdoor applications, it also has two lugs for quick and easy wall mounting.

We would also like to introduce you to the new home of the Turtle. At the beginning of December 2019, after a two-year planning and construction phase, we finally moved to our new office building. We are now continuing our work here, our slogan being "Innovation with Technology".

We hope you enjoy reading our magazine



Dipl.-Ing.  
Christoph Schneider



Dipl.-Betriebswirtin (BA)  
Yvonne Ellwanger

# TABLE OF CONTENTS



## The new enclosure series SMART-CONTROL

# 8-11

SMART-CONTROL is our first standard enclosure for easy installation in room corners. In addition, this enclosure range can be used both on a wall and on a desk at an ergonomically inclined angle.



## The new enclosure series EASYTEC

The new EASYTEC range of wall-mounted enclosures is optimally designed for the integration of industrial automation (Industrial Internet of Things) and the IoT.



## PRODUCT SUPPLEMENTS 20-21

New holders for CONNECT and STYLE-CASE S/M and more.



## DIGITAL PRINTING 22

The printing capacity has thus been doubled.



## TRAINING 23

The OKW Trainee Welcome Day.



s  
**14-17**  
enclosures has been  
smart sensors for the IIoT

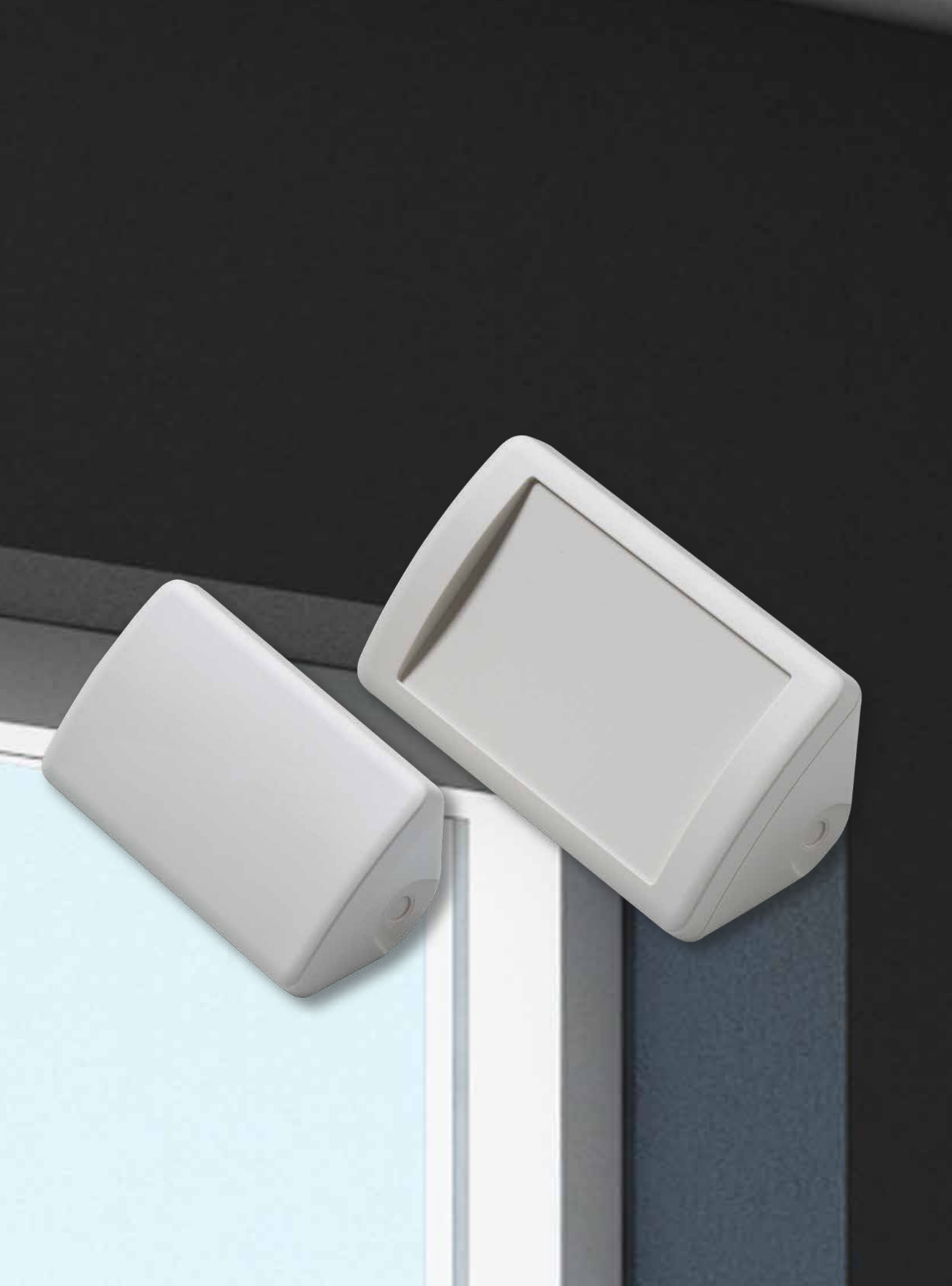
Individual laser marking **18-19**  
OKW Gehäusesysteme now also offers laser marking for numerous plastic enclosures and components from the standard range. It is ideal for individual labelling, identifying or marking.



COMPANY  
RELOCATION **24-25**  
The Turtle has a new home.

COMPANY  
RELOCATION **26-29**  
Photos.

NEW  
WEBSITE **30-31**  
ORCA Gehäusetechnik has modified its company website.







# SMART-CONTROL

For precise use, devices used for the large-area monitoring of security areas or public spaces should be placed as high up on the ceiling as possible. Various sensors can also be used there for easy communication. The devices are often mounted on walls, the corners remain empty.

OKW Gehäusesysteme has designed a suitable solution for these unused areas – SMART-CONTROL. The devices do not interfere, they are ideally protected from damage, are space-saving and make optimum use of the usually empty room corners.

The new SMART-CONTROL has a basic triangular shape. This makes it ideal for corner applications. The modern design blends harmoniously into the room, without requiring valuable wall space. However, the plastic enclosure can also be used at an ergonomic installation angle of 45°. The SMART-CONTROL is available in two sizes with the

following dimensions (H x W x D): the compact size S with 142 x 81 x 46 mm, and size M with 173 x 101 x 59 mm. Depending on the required installation volume, the right enclosure can be selected here. There are also two versions for each size, and these differ only in the top part. Anyone planning to fit a décor foil or membrane

Author: **Oliver Herrlich**, Development/Construction at OKW Gehäusesysteme





keyboard will choose the version with a recessed surface. If this is not required, you can opt for the complex arched variant. The rounded corners of the enclosure ensure a uniform appearance.

In addition to the top and bottom parts, the enclosure cover includes an assembly kit with a universal adapter for a wall or desktop suspension element. In order not to disrupt the design on the visible side, the individual parts are screwed together with 4 Torx stainless steel screws on the rear of the enclosure. The adapter is attached to the bottom part with a screw. There are sufficient fastening pillars in the top and bottom parts for the installation of PCBs circuit boards and built-in parts. SMART-CONTROLS are made of flame-resistant ASA+PC-FR (UL 94 V-0). The material offers high UV resistance. The enclosures are available from stock in the typical OKW colour off-white, RAL 9002. If a different colour is desired, however, this can be requested. The enclosures have IP40 protection as standard.

The new SMART-CONTROL is the first enclosure by OKW Gehäusesysteme for easy installation in standard room corners. A wall suspension element is available to mount it correctly. The accessory allows the simple, flush installation of the enclosure in 90° inside corners or on a flat surface. Mounting is effected longitudinally by a simple snap-in device

### High-quality material

is available to mount it correctly. The accessory allows the simple, flush installation of the enclosure in 90°

with the Uni-Adapter supplied with the enclosure. If the device is to be mounted on a flat surface, there are 3 options: vertically or horizontally, or at an ergonomic angle of 45°.

Alternatively, the enclosures can be used as desktop applications. For this purpose, a desktop stand set can be attached to the bottom part. This provides stability when it is placed horizontally on the desk. Data can be entered and read off at an ergonomically favourable angle of 45°. Self-adhesive enclosure feet prevent the device from slipping and ensure stability.

### Intelligent accessories





Installation is exactly the same as with the wall suspension element, by snapping into the adapter.

A seal is available to achieve protection class IP55. This is inserted into the existing groove in the bottom part. Self-tapping screws are available in the range of accessories for fixing PCBs and integrated parts.

The areas of application of the new enclosure range are very diverse, especially due to their space-saving installation. In safety and monitoring technology, for example, the SMART-CONTROL can be used as a monitoring device for different purposes. Thanks to the corner mounting, the greatest possible control is possible. Thanks to its raised installation, it is also ideally protected, for example from vandalism. In environmental technology, important data such as air quality or noise levels can be measured. Its use is particularly interesting in the IoT/IIoT sector. The

**Versatile** devices are assigned a unique identity in the network and are equipped with electronic intelligence. Communication takes place through the Internet. Tasks are thus carried out fully automatically.

In addition, applications are possible in measurement and control technology, in gateways for connecting two systems, in medical and laboratory technology or in sensor technology.

The enclosures are processed directly in-house. Any holes or cut-outs required by the customer can easily

be made by means of mechanical machining. To protect the electronics from interference, an EMC aluminium coating can be applied to the inside of the enclosure. To individualise the enclosures, they can simply be printed or labelled as desired. This allows the logo to be perfectly presented, or important functions of the end devices and tuning knobs can be visually embellished and highlighted. On request, assembly can also be carried out on site,





and much more. From standard enclosures to individual customer solutions – at OKW Gehäusesysteme, everything comes from a single source.

Recently, OKW started offering a new method: laser marking. It is ideal for individual labelling, identifying or marking. In particular, very small machine-readable markings, e.g. QR codes, barcodes, and the consecutive numbering of individual parts and texts, can thus be applied quickly and easily.

## Individual finishing

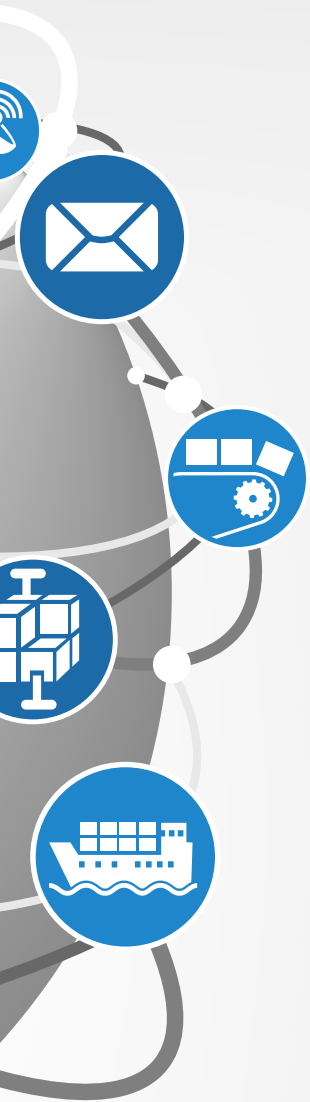


### Product advantages in brief:

- 2 sizes, M and S
- convex version or version with recessed operating area for membrane keypads
- high-quality ASA+PC-FR material with high UV protection in the standard colour off-white (RAL 9002)
- screwed together on the rear of the enclosure using Torx stainless steel screws
- optional seal (accessory) for IP 55
- special wall suspension element (accessory) for mounting the enclosure in 90° inside corners or on flat surfaces
- desktop stand set (accessory) ensures reliable desktop positioning and an ergonomic reading angle of 45° when the enclosure is set up horizontally
- PCB mounting positions in the top and bottom parts







ERNET

# INDUSTRIAL INTERNET OF THINGS

The Industrial Internet of things (IIoT) is the Internet of Things in an industrial environment. The difference between it and the Internet of things (IoT for short) is simple: while the IoT provides entertainment and comfort for consumers, the IIoT has to meet much more demanding requirements.

This is illustrated by the comparison of Smart Home with Smart Factory: Smart Home triggers interactions such as switching the light on and off. Relatively little information is required. Smart Factory, on the other hand, collects masses of data about machines, special work scenarios or the entire value-added chain and makes such data centrally available.

Everything happens in real time. If a problem occurs, it can thus be addressed quickly.



# EASYTEC

The IIoT (Industrial Internet of Things) focuses on industrial processes and workflows. The objectives include improving operational efficiency, reducing costs and ensuring faster processing. This can affect the areas of logistics and production, but also energy supply or the medical environment. The use of intelligent, interconnected systems facilitates smooth communication with each other.

The new EASYTEC wall-mounted enclosure has been optimally designed for the integration of smart sensors for the IIoT and the IoT.

Author: Lisa Binninger, Marketing at OKW Gehäusesysteme



OKW Gehäusesysteme has expanded its range of enclosures with the new EASYTEC. The special feature of this enclosure range is that there are fully integrated lugs on the short end faces of the bottom part. This allows the devices to be mounted quickly and easily on the wall. Depending on the desired orientation, this is possible either horizontally or vertically. The flanged enclosures can also be mounted on pipes or round profiles. For the latter application, they can be mounted using cable ties. This is supported visually by the rounded recess

## Integrated lugs





on the underside, and it also holds better. The enclosure is mounted using four stainless steel screws with Torx drive on the underside. This means that no screws are visible, which has a positive influence on the appearance. PCBs can be installed on the fastening pillars in the top part and/or in the bottom part.

The plastic enclosures are available in two different sizes, each in two heights:

size 80 in 101 x 50 x 22/26 mm and size 100 in 121 x 62 x 26/31 mm (length including flange x width x height). Off-white, RAL 9002, is available

from stock as the standard colour. The enclosure is made of high-quality, flame-retardant ASA+PC-FR material (UL 94 V-0). The enclosure has

## Two sizes

a two-part design, thus providing a high degree of stability. The supply includes a flat top part, a flat bottom part with flange and an assembly kit. The kit contains self-adhesive, anti-slip enclosure feet to ensure stability if desktop use is required. The corners are characterised by large radii.





A harsh environment can damage the internal electronics. It is important to offer them the best possible protection from moisture, dirt and dust. Short circuits or malfunctions should be ruled out. In order to protect the sturdy enclosure and its electronics compartment from robust environments, a seal is also available in the range of accessories. This allows the protection class to be raised from IP 40 to IP 65 and, in addition to indoor use, allows robust outdoor use as well. This is also supported by the stainless steel screws with Torx drive used to hold the enclosure together. The seal is inserted into the groove in the bottom part. Self-tapping screws with cross recess or alternatively with Torx drive are available from stock. This allows PCBs or other components to be mounted quickly. For this purpose, there are two fastening pillars each in the top and bottom parts.

EASYTEC enclosures can easily be integrated into a wide range of applications thanks to the lugs and the rounded recess on the bottom part. Indoors, the enclosures can be mounted on the wall or on a pipe, which allows simple and efficient use in the field of measurement or also control technology. In the field of the IIoT, the terminal can be used to improve operational efficiency in production. Faults or problems in machines and systems can be detected immediately by means of LEDs mounted on the enclosures.

The robust design of the enclosure, including the seal, facilitates installation in industrial environments or outdoors. EASYTEC can record weather data or check the quality of the air (environmental technology). Other areas of application include sensor technology, medical and laboratory technology, information technology and safety and monitoring technology.

In order to guarantee optimum use of the subsequent terminal units, the standard enclosures can be modified by OKW through a series of refinements and finishes. These are carried out individually and according to customer requirements. For example, EASYTEC enclosures can be printed with corporate colours or logos. If cutouts or interfaces are required for LEDs or operating elements, mechanical processing can be carried out. OKW offers an EMC coating on the inside of the enclosure to protect the electronics from their own increased interference emission and from







external interference. Installation or painting is also offered directly on site.

With immediate effect, OKW now offers a new technology, laser marking.

**Individual** It is ideal for individual labelling, identifying or marking. In particular, very small machine-readable markings, e.g. QR codes, barcodes, and the consecutive numbering of individual parts and texts, can thus be applied quickly and easily. Laser marking involves a colour change on the surface. Dark and light plastics turn grey at the points to be marked.

#### Product advantages in brief:

- modern enclosure design with a high degree of stability
- two sizes 80/100, each in 2 heights
- flame-retardant material ASA+PC and optional protection class IP 65 (seals as accessory) for robust indoor and outdoor applications
- discreet standard off-white colour (RAL 9002) supports the wide range of applications – on request we can also produce the enclosures in other colours
- the bottom part has 2 lugs for quick wall mounting or for installation on pipes/round profiles
- tight electronics compartment with two PCB levels (in the top/bottom parts)
- screw connection with stainless steel screws and Torx drive



# CUSTOMISATION THROUGH LASER MARKING

OKW Gehäusesysteme now also offers laser marking for numerous plastic enclosures and components from the standard range.

Laser marking is ideal for individual labelling, identifying or marking. In particular, very small machine-readable markings, e.g. QR codes, bar-codes, consecutive numbering of individual parts and individual texts, can be carried out quickly and easily with laser marking. Laser marking involves a colour change on the surface. Dark and light plastic parts turn grey at the points to be marked.

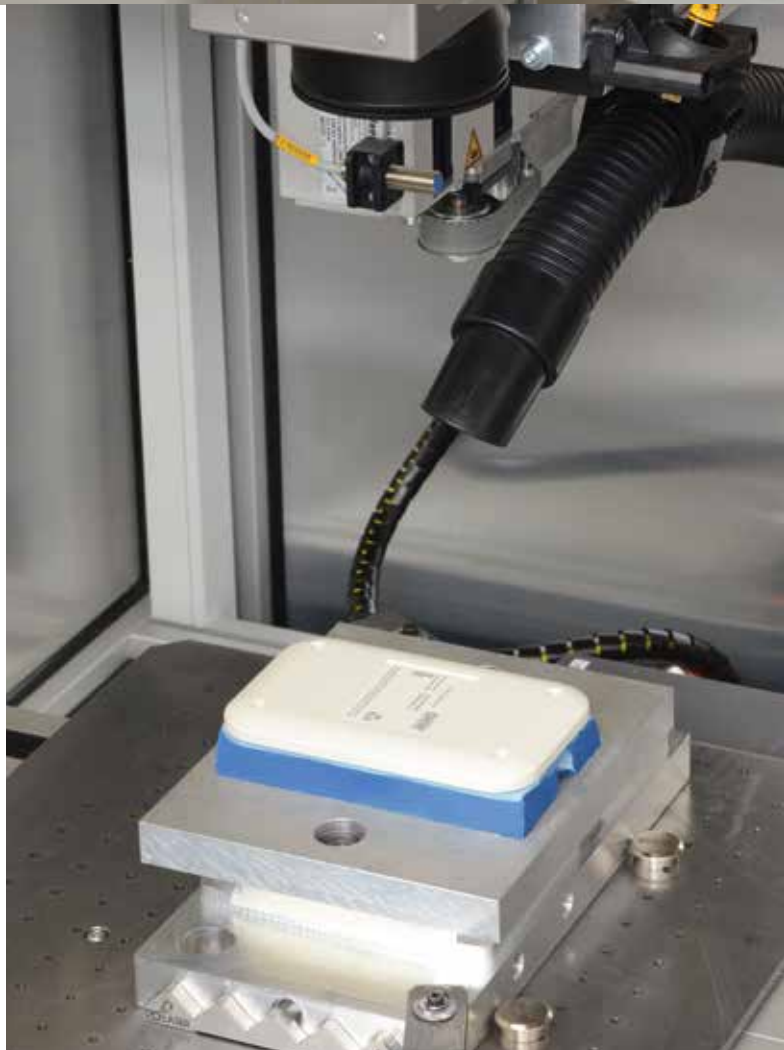
Depending on the material, the following colours are suitable for particularly high-contrast marking:

- off-white
- pebble grey
- light grey
- lava
- black

Suitable materials:

- ABS
- ASA+PC
- ASA+PC-FR
- PC
- PA
- PA GF
- Aluminium





## PRODUCT SUPPLEMENTS

---

# EVOTEC IN SIZE "80"

The robust EVOTEC family of enclosures has been extended by a further size. Two versions are available, with a high top part and a flat top part.

The enclosures are in the colour off-white, RAL 9002, and have the following dimensions: 80 x 50 x 22 mm and 80 x 50 x 26 mm.

The EVOTEC range of enclosures offers ideal conditions for harsh working environments thanks to its robust design and the advantage of an optional seal (for protection class IP 65).



## PRODUCT SUPPLEMENTS

---

# HOLDER FOR CONNECT

A special holder for the CONNECT is now available for wall mounting. The enclosure range consists of 3 different sizes, in the colours off-white and black, which differ only in length.

With these holders, the equipment can be stored securely and easily after use. A cutout on the underside of the new accessory makes it easy to store wired devices.



## PRODUCT SUPPLEMENTS

---

# NET-BOX

The NET-BOX range of enclosures has been extended by a new version. The keyhole and the two screw holes are already open and do not need to be refinished.

The separate upper compartment accommodates your extensive electronics on two levels. Protection class IP 65 can be reached with the optional sealing kit. The necessary dialogue elements such as LEDs, small displays and logos can be elegantly integrated in the curved front side. The NET BOX has an optional cover that closes the bottom part of the enclosure. The cable and plug are thus invisible.



## PRODUCT SUPPLEMENTS

---

# STYLE-CASE

In addition to the holder already available for the STYLE-CASE "L", it is now also available for the sizes "S" and "M". As an optional accessory, it can be used to store the enclosures securely.

The holder can be screwed to the wall easily and quickly using 2 pre-formed oblong holes. For substrates such as furniture, for example, which would be damaged by drilling, a suitable adhesive film is offered as an alternative. The holders are available in black, RAL 9005, and traffic white, RAL 9016, to match the enclosure colours.

A further version of the highly polished STYLE-CASE housing series is now available in the size "L". Up to now, all enclosures were only available with a battery compartment fitted. The STYLE-CASE "L" is now also available in the colour traffic white without a battery compartment.



# EXPANSION OF CAPACITIES IN DIGITAL PRINTING

"With our investment in two additional digital printers, we are continuing our growth in the individualisation of our enclosures and tuning knobs," explains Production Manager Helmut Böhrer.

The printing capacity in the in-house processing centre has thus been doubled. With two digital printers each for the production of decor foils and for the digital printing of parts, OKW is now in an ideal position to serve a broad spectrum.

The decor foils are made in our own in-house printing department, assembled with adhesive layers and then cut to size for the recessed surface in the enclosure. Since printing is carried out on the rear side of the foils, the designs are perfectly protected from abrasion and influences from the front. For lettering and colour design, we can digitally produce decor foils quickly and easily for small batches starting with 1 unit. Colour gradations and white as a full-tone colour are also possible.

The digital printing process (photo quality, 1800x1800 dpi) allows different versions without a great deal of trouble, e.g. in design, with consecutive numbering, barcodes and technical specifications. As a specialist, we can print plastic surfaces (ABS, PC, ASA, ASA+PC) with a height difference of up to 2.5 mm.

This innovative technology easily meets the high standards of quality and precision.



For detailed information, see [www.okw.com](http://www.okw.com) - Customising



# FOR A SUCCESSFUL START TO PROFESSIONAL LIFE

Vocational training poses a new challenge for them in their lives to date. They have to stand on their own two feet, they earn their first money and can actively contribute their skills and ideas. For a successful start into this new phase of their lives, OKW organises a Trainee Welcome Day every year.

At the beginning there is a general round of introductions for all new trainees. This is followed by tours of the OKW Group factories in Buchen and Schlierstadt:

- OKW Gehäusesysteme provides an insight into the day-to-day work of finishing and marketing plastic and aluminium enclosures.
- Computer Creativ is responsible for human resources, financial accounting and IT services within the group of companies.

- FBB Formenbau Buchen shows the development and construction of tools for injection-moulded, die-cast, silicone-cast or flexible parts.
- ORCA reports on the acquisition of customers and the sale of plastic and aluminium enclosures from various manufacturers.
- BKW provides an insight into the storage of plastic granules and the production of injection-moulded parts.

After an informative start, the participants get to know each other in the course of an afternoon spent together.

# OKW HAS MOVED

After a two-year planning and construction phase, the move to the new administration building took place on Saturday, 30th November. This is located directly next to the previous headquarters of Odenwälder Kunststoffwerke Gehäusesysteme GmbH in Friedrich-List-Strasse in Buchen.



"Innovation with tradition" – this philosophy of the family-owned business, which has been based in Buchen since 1984, is the thread running through the construction project. It was important to preserve the basic structure of the building, which was built in the 1950s by Dr. Herbert Schneider, the grandfather of today's managing director Christoph Schneider.

"It is important for us to keep today's generations aware of the family and company history. This is the intention behind our OKW Museum, which has existed for many years and which covers the history of the company from its foundation to the present day. Not only the products, but above all the people, have made possible the basis on which we invest today for the future. In our new building there will therefore also be 'windows into the past' as

reminders. We are very proud of the result – the combination of stable old stock and the latest technologies concerning climate and energy," says Managing Director Christoph Schneider.

In the previous office building, the individual departments were separated from each other by several building sections and very long walking distances. All administrative departments have now been brought together in a clear spatial structure. In addition to attractive workplaces, central communication points have also been set up to focus even more on cooperation in a pleasant environment.





At the same time, a further construction phase has already been started to link the administrative area with the production and logistics areas. A spacious lecture room, a presentation area for enclosures and tuning knobs as well as a common canteen are to be created here.

"According to the idea, there will be a connecting wing in the truest sense of the word. A space is to be created to serve as a meeting place for employees as well as national and international customers and partners for presentations, training sessions or simply for a chat over lunch. Even in times of digital communication media, we want to focus on the value of personal contacts," says Yvonne Ellwanger, authorised signatory.











# NEW DESIGN FOR THE ORCA WEBSITE

As digitisation progresses, attractive websites are becoming more and more important in order to be prepared for competition. True to the motto "in the course of time, a lot has changed, be it technologies or structures," says Managing Director Peter Bauer, the website of ORCA Gehäusetechnik GmbH has also adapted to this change.



ORCA Gehäusetechnik GmbH is a pure marketing company of OKW Gehäusesysteme GmbH and ROLEC Gehäuse-Systeme GmbH. The managing directors are participants in ORCA and interpret leadership as personal responsibility for the employees.

A clearly structured interface has been created on the new website. It now uses the latest state of technology to inform and support users. Customers and interested parties will find information on the following areas: Enclosures, IoT / 4.0, Suspension arm / command, Customer projects, Input systems / tuning knobs, Service / processing, Who we are and Contact. In the past 10 years, ORCA has become a recognised specialist in the fields of machine and plant engineering, measurement and control technology, medical technology and automation

technology. Only first-class consulting services, convincing enclosure concepts, processing services and short delivery times by the manufacturers proved convincing and created trust on the part of the customer.

The ORCA Gehäusetechnik sales organisation is divided into three areas, North, South and East. This ensures that all customers throughout Germany enjoy optimum support. All contacts are listed on the following page. Most of the sales staff have been with ORCA since the company was founded.

## ORCA NORTH



**Ralf-J. Cordt**  
Managing director



**Hans-Werner Deppe**  
Nordhessen, Köln,  
Aachen



**Thomas Wohlgemuth**  
Ruhrgebiet, Bremen,  
Emsland



**Rüdiger Meyer**  
Wolfsburg, Göttingen,  
Schleswig-Holstein,  
Hamburg

## ORCA SOUTH



**Peter Bauer**  
Managing director



**Bardo Niepoth**  
Karlsruhe, Darmstadt,  
Rhein-Hessen, Saarland



**Dieter Eckl**  
Schwaben, Oberbayern,  
Niederbayern, Oberpfalz



**Daniel Schwab**  
Regional Sales Manager



**Julian Maas**  
Tübingen, Freiburg



**Uschi Heilmann**  
Stuttgart, Unter-, Mittel-  
und Oberfranken

## ORCA EAST



**Steffen Möckel**  
Managing director



**Olaf Rau**  
Thüringen, West-Sachsen,  
Sachsenanhalt, West-  
Mecklenburg-Vorpommern





Odenwälder Kunststoffwerke  
Gehäusesysteme GmbH

Friedrich-List-Str. 3  
74722 Buchen, Germany

Tel. +49 (0) 62 81 / 404-00

E-Mail [Info@okw.com](mailto:Info@okw.com)

Web [www.okw.com](http://www.okw.com)

