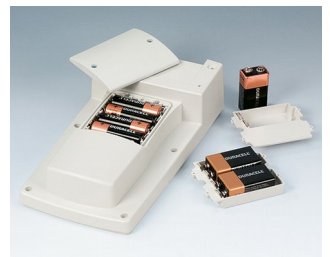


# HAND-TERMINAL

## Handheld enclosures for control systems in production and for outdoors

These tough, attractive and highly functional plastic enclosures are specifically designed for heavy duty handheld electronics equipments.

- impact resistant material
- robust with a high protection class up to IP 65 (sealing kit accessory)
- plenty of space for operating elements, displays, emergency stop switch, enable pushbuttons etc.
- ergonomic hand grip on underside, great to hold
- for control systems with cable connection or battery compartment 4 x AA, 1 x 9 V or 2 x 9 V cells
- optimum weight distribution
- recessed operating area for protecting the membrane keypad
- version I with closed top part
- version II for aluminum front panel assembly
- internal fastening pillars for PCBs



# HAND-TERMINAL

## Applications and Examples

- Flexible machine control systems in production and assembly
- Terminals for programming and teach-in applications
- Classic applications in the field of electrical engineering and electronics, e.g. measurement and control equipment
- Mobile terminals, programmers, data collection units and much more



Analysing water quality

## View Customizing Options

What do you still need for your own very personal product? We can supply enclosures and tuning knobs with all necessary modifications for fitting your electronic components.  
 Customizing options for Hand-Terminal



Machining



Lacquering



Printing



Laser marking



Decor foils



RFI/EMI shielding



Installation / Assembly  
 of accessories

# HAND-TERMINAL

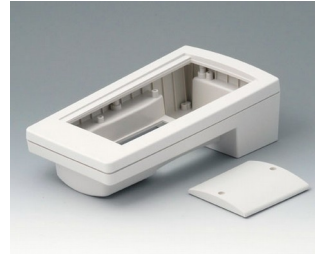
## Select Versions



**A9046107**  
HAND-TERMINAL M, Vers. I  
PC+ABS (UL 94 V-0)  
off-white RAL 9002  
8.66"x4.72"x2.56"  
IP 65 opt.



**A9046109**  
HAND-TERMINAL M, Vers. I  
PC+ABS (UL 94 V-0)  
black RAL 9005  
8.66"x4.72"x2.56"  
IP 65 opt.

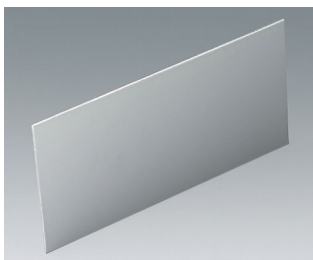


**A9046207**  
HAND-TERMINAL M, Vers. II  
PC+ABS (UL 94 V-0)  
off-white RAL 9002  
8.66"x4.72"x2.56"  
IP 65 opt.



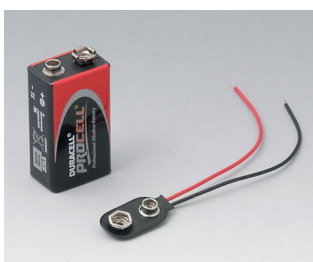
**A9046209**  
HAND-TERMINAL M, Vers. II  
PC+ABS (UL 94 V-0)  
black RAL 9005  
8.66"x4.72"x2.56"  
IP 65 opt.

## Accessory to complete



**A9146101**  
Front panel M  
Aluminum  
matt anodized  
7.05"x3.46"x0.08"

## Accessory "battery"



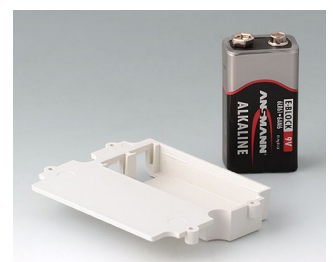
**A9160003**  
Plug-in contact, 1 x 9 V



**A9161002**  
Set of battery clips, 2 x 9 V or 4 x AA  
Steel  
tin-plated



**A9174002**  
Battery compartment, 2 x 9 V  
ABS (UL 94 HB)  
off-white RAL 9002



**A9174003**  
Battery compartment, 1 x 9 V  
ABS (UL 94 HB)  
off-white RAL 9002

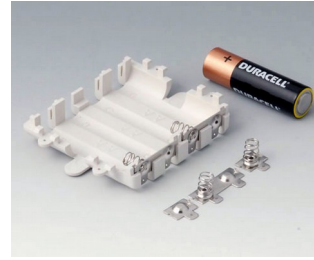
# HAND-TERMINAL



**A9174006**  
Set of battery clips, 1 x 9 V  
Steel  
tin-plated

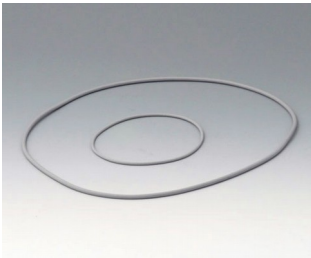


**A9250250**  
Battery spacer  
PE foam  
1.97"x0.98"x0.16"

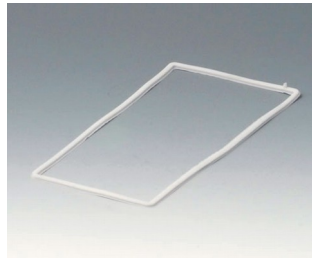


**A9345217**  
Set of battery compartment, 4 x  
AA  
ABS (UL 94 HB)  
off-white RAL 9002

## Accessory "protection"



**A9146106**  
Sealing kit M



**A9146206**  
Sealing M

## Accessory "screws"



**A0306031**  
Self-tapping screws 0.118" x  
0.236" (PZ1)



**A0308031**  
Self-tapping screws 0.118" x  
0.315" (PZ1)



**A0308132**  
Self-tapping screw 0.118" x  
0.315" (T10)  
Stainless steel

Subject to technical modification without notice. © by OKW Gehäusesysteme, Buchen/Germany.