

SOFT-CASE

Wide-format handheld enclosures

SOFT-CASE plastic enclosures convince design engineers, because they correspond with today's design and technology needs.

- handy design with soft contours for a pleasant touch sensation
- unique "wide-format" offers a generous interface area as well as sufficient room for larger displays, while also ensuring user comfort
- raised connector mounting panel on the wide edge to accommodate more connections
- universal use for handheld, desktop and wall mount applications
- four sizes
- optional intermediate rings provide more installation height. Different versions: ABS rings in case color or chromated, soft TPE ring
- with soft TPE ring protection class IP 54 possible (enclosure versions without battery compartment in ABS or PMMA)
- two materials: ABS (UL 94 HB) or PMMA infra-red light-permeable (UL 94 HB)
- without/with battery compartment for 2 x AAA, 2 x AA, 4 x AA or 1 x 9 V;
- clip-on battery compartment lid can be screw fixed
- recessed operating area for protecting the membrane keypad or decorative foil/label
- combi-clip serves as a belt clip and/or wall suspension element (accessory)
- tilt foot bar for ergonomic canting on a desk
- internal fastening pillars for PCBs



SOFT-CASE

Applications and Examples

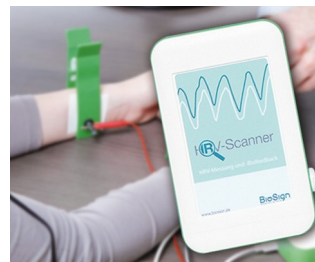
- All types of remote control devices, wireless or with cable
- Measurement and control engineering
- Digital control technology
- Medical and laboratory technology
- Peripheral and interface equipment
- Communications technology
- IoT/IIoT
- Environmental engineering
- Energy management



Digital joystick for ISO bus machines



Geiger counter with logging function



HRV scanner for analysing the autonomic nervous system



Module for smart mobility applications



Multimedia audioguide for museums



Real-time localisation in the healthcare sector



Remote control unit for AutoSat satellite receiver



RFID Reader



RIDEwatcher Multimeter for ride profiles



Sensor for measuring carbon dioxide concentration

View Customizing Options

What do you still need for your own very personal product? We can supply enclosures and tuning knobs with all necessary modifications for fitting your electronic components.
Customizing options for Soft-Case

SOFT-CASE



Machining



Lacquering



Printing



Laser marking



Decor foils



Special material



RFI/EMI shielding



Installation / Assembly
of accessories

Select Versions



A9050107
SOFT-CASE S
ABS (UL 94 HB)
off-white RAL 9002
2.01"x3.23"x0.55"
IP 54 opt., IP 40



A9050108
SOFT-CASE S
ABS (UL 94 HB)
lava
2.01"x3.23"x0.55"
IP 54 opt., IP 40



A9050209
SOFT-CASE S
PMMA (IR) (UL 94 HB)
black RAL 9005
2.01"x3.23"x0.55"
IP 54 opt., IP 40



A9051107
SOFT-CASE M
ABS (UL 94 HB)
off-white RAL 9002
2.56"x4.13"x0.75"
IP 54 opt., IP 40



A9051108
SOFT-CASE M
ABS (UL 94 HB)
lava
2.56"x4.13"x0.75"
IP 54 opt., IP 40



A9051117
SOFT-CASE M
ABS (UL 94 HB)
off-white RAL 9002
2.56"x4.13"x0.75"
IP 40



A9051118
SOFT-CASE M
ABS (UL 94 HB)
lava
2.56"x4.13"x0.75"
IP 40



A9051209
SOFT-CASE M
PMMA (IR) (UL 94 HB)
black RAL 9005
2.56"x4.13"x0.75"
IP 54 opt., IP 40

SOFT-CASE



A9051219
SOFT-CASE M
PMMA (IR) (UL 94 HB)
black RAL 9005
2.56"x4.13"x0.75"
IP 40



A9052107
SOFT-CASE L
ABS (UL 94 HB)
off-white RAL 9002
2.87"x4.61"x0.94"
IP 54 opt., IP 40



A9052108
SOFT-CASE L
ABS (UL 94 HB)
lava
2.87"x4.61"x0.94"
IP 54 opt., IP 40



A9052117
SOFT-CASE L
ABS (UL 94 HB)
off-white RAL 9002
2.87"x4.61"x0.94"
IP 40



A9052118
SOFT-CASE L
ABS (UL 94 HB)
lava
2.87"x4.61"x0.94"
IP 40



A9052127
SOFT-CASE L
ABS (UL 94 HB)
off-white RAL 9002
2.87"x4.61"x0.94"
IP 40



A9052128
SOFT-CASE L
ABS (UL 94 HB)
lava
2.87"x4.61"x0.94"
IP 40



A9052209
SOFT-CASE L
PMMA (IR) (UL 94 HB)
black RAL 9005
2.87"x4.61"x0.94"
IP 54 opt., IP 40



A9052219
SOFT-CASE L
PMMA (IR) (UL 94 HB)
black RAL 9005
2.87"x4.61"x0.94"
IP 40



A9052229
SOFT-CASE L
PMMA (IR) (UL 94 HB)
black RAL 9005
2.87"x4.61"x0.94"
IP 40



A9053107
SOFT-CASE XL
ABS (UL 94 HB)
off-white RAL 9002
3.62"x5.91"x1.10"
IP 40



A9053108
SOFT-CASE XL
ABS (UL 94 HB)
lava
3.62"x5.91"x1.10"
IP 40



A9053117
SOFT-CASE XL
ABS (UL 94 HB)
off-white RAL 9002
3.62"x5.91"x1.10"
IP 40



A9053118
SOFT-CASE XL
ABS (UL 94 HB)
lava
3.62"x5.91"x1.10"
IP 40



A9053209
SOFT-CASE XL
PMMA (IR) (UL 94 HB)
black RAL 9005
3.62"x5.91"x1.10"
IP 40



A9053219
SOFT-CASE XL
PMMA (IR) (UL 94 HB)
black RAL 9005
3.62"x5.91"x1.10"
IP 40

SOFT-CASE

Accessory "intermediate ring"



A9150011
Intermediate ring S
ABS (UL 94 HB)
matt chromed
2.13"x3.35"x0.47"



A9150017
Intermediate ring S
ABS (UL 94 HB)
off-white RAL 9002
2.13"x3.35"x0.47"



A9150018
Intermediate ring S
ABS (UL 94 HB)
lava
2.13"x3.35"x0.47"



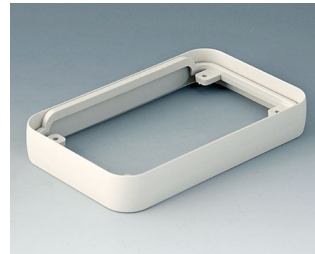
A9150118
Intermediate protection ring S
SEBS (TPE)
volcano
2.13"x3.35"x0.47"



A9150219
Intermediate ring S
PMMA (IR) (UL 94 HB)
black RAL 9005
2.13"x3.35"x0.47"



A9151011
Intermediate ring M
ABS (UL 94 HB)
matt chromed
2.68"x4.25"x0.63"



A9151017
Intermediate ring M
ABS (UL 94 HB)
off-white RAL 9002
2.68"x4.25"x0.63"



A9151018
Intermediate ring M
ABS (UL 94 HB)
lava
2.68"x4.25"x0.63"



A9151118
Intermediate protection ring M
SEBS (TPE)
volcano
2.68"x4.25"x0.63"



A9151219
Intermediate ring M
PMMA (IR) (UL 94 HB)
black RAL 9005
2.68"x4.25"x0.63"



A9152011
Intermediate ring L
ABS (UL 94 HB)
matt chromed
2.99"x4.72"x0.83"



A9152017
Intermediate ring L
ABS (UL 94 HB)
off-white RAL 9002
2.99"x4.72"x0.83"



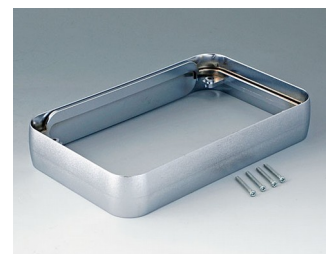
A9152018
Intermediate ring L
ABS (UL 94 HB)
lava
2.99"x4.72"x0.83"



A9152118
Intermediate protection ring L
SEBS (TPE)
volcano
2.99"x4.72"x0.83"



A9152219
Intermediate ring L
PMMA (IR) (UL 94 HB)
black RAL 9005
2.99"x4.72"x0.83"



A9153011
Intermediate ring XL
ABS (UL 94 HB)
matt chromed
3.78"x6.06"x1.02"

SOFT-CASE



A9153017
Intermediate ring XL
ABS (UL 94 HB)
off-white RAL 9002
3.78"x6.06"x1.02"



A9153018
Intermediate ring XL
ABS (UL 94 HB)
lava
3.78"x6.06"x1.02"



A9153118
Intermediate ring XL
SEBS (TPE)
volcano
3.78"x6.06"x1.02"



A9153219
Intermediate ring XL
PMMA (IR) (UL 94 HB)
black RAL 9005
3.78"x6.06"x1.02"

Accessory "battery"



A9151010
Set of battery clips, 2 x AAA
Steel
nickel-plated



A9152010
Set of battery clips, 2/4 x AA
Steel
nickel-plated



A9174006
Set of battery clips, 1 x 9 V
Steel
tin-plated

Accessory "wall/holder"



A9152047
Combi-Clip
ABS (UL 94 HB)
off-white RAL 9002
1.77"x1.06"



A9152048
Combi-Clip
ABS (UL 94 HB)
lava
1.77"x1.06"



A9152049
Combi-Clip
ABS (UL 94 HB)
black RAL 9005
1.77"x1.06"

Accessory "carrying"



A9100001
Ring eyelet
PA 6
volcano



A9100002
Ring eyelet
PA 6
volcano



A9152047
Combi-Clip
ABS (UL 94 HB)
off-white RAL 9002
1.77"x1.06"



A9152048
Combi-Clip
ABS (UL 94 HB)
lava
1.77"x1.06"

SOFT-CASE



A9152049
 Combi-Clip
 ABS (UL 94 HB)
 black RAL 9005
 1.77"x1.06"



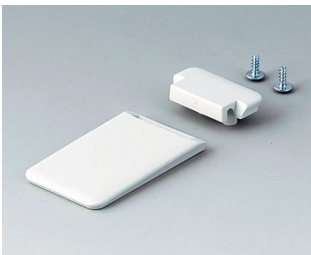
B9106128
 Strap eyelet
 ABS (UL 94 HB)
 lava

Accessory "screws"



A0304031
 Self-tapping screws 0.087" x
 0.197" (PZ1)

Accessory



A9152057
 Tilt foot bar
 ABS (UL 94 HB)
 off-white RAL 9002



A9152058
 Tilt foot bar
 ABS (UL 94 HB)
 lava



A9152059
 Tilt foot bar
 ABS (UL 94 HB)
 black RAL 9005

Subject to technical modification without notice. © by OKW Gehäusesysteme, Buchen/Germany.