

ART-CASE

Uniquely styled electronic enclosures

The ART-CASE plastic enclosures series sets new standards for design and function with four uniquely contoured shapes: "round", "square", "oval" and "edge"

- attractive eye-catching design for indoor electronics used in the living and working environments
- four designs in two standard colors
- huge range of possible combinations for mobile, desktop, wall or ceiling mounted applications
- order the basic case then select either a bottom lid or base section
- top convex (H) or flat with recessed area (F)
- lid screw fitted to the bottom
- base 30° or 55° inclined for user-friendly installation and assembly angles
- base level spacer for ceiling/wall mounting, incl. supports 2 x AA and strain relief
- Euro plug module according DIN VDE 0620 part 101
- battery compartment for 2 x AAA cells (accessory)
- protection class IP 40
- internal fastening pillars for PCBs etc.



ART-CASE

Applications and Examples

Ideal indoor electrical and electronic applications, e.g.

- Transmission and reception units in building services management systems and building installations
- Medical technology and health care
- Computer peripherals
- Security technology
- Sensors, optoelectronics



3D angle measurement of articulation systems on a gravity basis



Access management in care facilities



CO2 sensor traffic light



Multiple analytical resonance system



Radio paging mushroom-type button



RFID Reader for the CTV system



VIVOBASE HOME

View Customizing Options

What do you still need for your own very personal product? We can supply enclosures and tuning knobs with all necessary modifications for fitting your electronic components.

Customizing options for Art-Case



Machining



Lacquering



Printing



Laser marking



Decor foils



Special material



RFI/EMI shielding



Installation / Assembly of accessories

ART-CASE

Select Versions



B5010007
Bottom and top part R110 F
ABS (UL 94 HB)
off-white RAL 9002
ø4.33"x1.18"



B5010009
Bottom and top part R110 F
ABS (UL 94 HB)
black RAL 9005
ø4.33"x1.18"



B5010107
Bottom and top part R110 H
ABS (UL 94 HB)
off-white RAL 9002
ø4.33"x1.50"



B5010109
Bottom and top part R110 H
ABS (UL 94 HB)
black RAL 9005
ø4.33"x1.50"



B5010207
Bottom and top part R110 F
ABS (UL 94 HB)
off-white RAL 9002
ø4.33"x1.50"



B5010209
Bottom and top part R110 F
ABS (UL 94 HB)
black RAL 9005
ø4.33"x1.50"



B5010307
Bottom and top part R110 H
ABS (UL 94 HB)
off-white RAL 9002
ø4.33"x1.61"



B5010309
Bottom and top part R110 H
ABS (UL 94 HB)
black RAL 9005
ø4.33"x1.61"



B5011027
ART-CASE R110 F
PC+ABS (UL 94 V-0)
off-white RAL 9002
ø4.33"x1.18"
IP 40



B5011029
ART-CASE R110 F
PC+ABS (UL 94 V-0)
black RAL 9005
ø4.33"x1.18"
IP 40



B5011127
ART-CASE R110 H
PC+ABS (UL 94 V-0)
off-white RAL 9002
ø4.33"x1.50"
IP 40



B5011129
ART-CASE R110 H
PC+ABS (UL 94 V-0)
black RAL 9005
ø4.33"x1.50"
IP 40



B5011227
ART-CASE R110 F
PC+ABS (UL 94 V-0)
off-white RAL 9002
ø4.33"x1.50"
IP 40



B5011229
ART-CASE R110 F
PC+ABS (UL 94 V-0)
black RAL 9005
ø4.33"x1.50"
IP 40



B5011327
ART-CASE R110 H
PC+ABS (UL 94 V-0)
off-white RAL 9002
ø4.33"x1.61"
IP 40

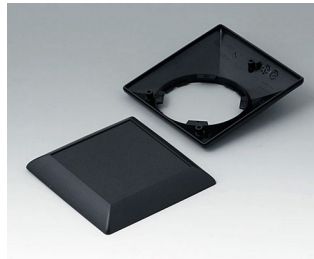


B5011329
ART-CASE R110 H
PC+ABS (UL 94 V-0)
black RAL 9005
ø4.33"x1.61"
IP 40

ART-CASE



B5012207
 Bottom and top part S110F
 ABS (UL 94 HB)
 off-white RAL 9002
 4.33"x4.33"x1.50"



B5012209
 Bottom and top part S110F
 ABS (UL 94 HB)
 black RAL 9005
 4.33"x4.33"x1.50"



B5013227
 ART-CASE S110 F
 PC+ABS (UL 94 V-0)
 off-white RAL 9002
 4.33"x4.33"x1.50"
 IP 40



B5013229
 ART-CASE S110 F
 PC+ABS (UL 94 V-0)
 black RAL 9005
 4.33"x4.33"x1.50"
 IP 40



B5015007
 Bottom and top part O160 F
 ABS (UL 94 HB)
 off-white RAL 9002
 6.30"x4.33"x1.18"



B5015009
 Bottom and top part O160 F
 ABS (UL 94 HB)
 black RAL 9005
 6.30"x4.33"x1.18"



B5015107
 Bottom and top part O160 H
 ABS (UL 94 HB)
 off-white RAL 9002
 6.30"x4.33"x1.50"



B5015109
 Bottom and top part O160 H
 ABS (UL 94 HB)
 black RAL 9005
 6.30"x4.33"x1.50"



B5015207
 Bottom and top part O160 F
 ABS (UL 94 HB)
 off-white RAL 9002
 6.30"x4.33"x1.50"



B5015209
 Bottom and top part O160 F
 ABS (UL 94 HB)
 black RAL 9005
 6.30"x4.33"x1.50"



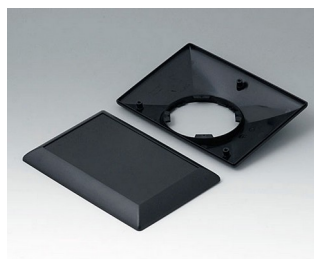
B5015307
 Bottom and top part O160 H
 ABS (UL 94 HB)
 off-white RAL 9002
 6.30"x4.33"x1.61"



B5015309
 Bottom and top part O160 H
 ABS (UL 94 HB)
 black RAL 9005
 6.30"x4.33"x1.61"



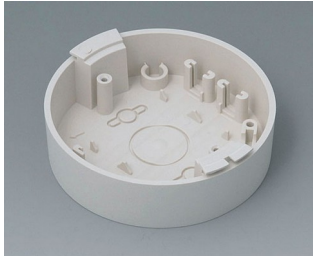
B5017207
 Bottom and top part E160 F
 ABS (UL 94 HB)
 off-white RAL 9002
 6.30"x4.33"x1.50"



B5017209
 Bottom and top part E160 F
 ABS (UL 94 HB)
 black RAL 9005
 6.30"x4.33"x1.50"

ART-CASE

System components to complete



B5011117
Base
ABS (UL 94 HB)
off-white RAL 9002



B5011119
Base
ABS (UL 94 HB)
black RAL 9005



B5011217
Base 30°
ABS (UL 94 HB)
off-white RAL 9002



B5011219
Base 30°
ABS (UL 94 HB)
black RAL 9005



B5011317
Base 55°
ABS (UL 94 HB)
off-white RAL 9002



B5011319
Base 55°
ABS (UL 94 HB)
black RAL 9005



B5011847
Lid
ABS (UL 94 HB)
off-white RAL 9002



B5011849
Lid
ABS (UL 94 HB)
black RAL 9005



B5011857
Battery compartment lid
ABS (UL 94 HB)
off-white RAL 9002

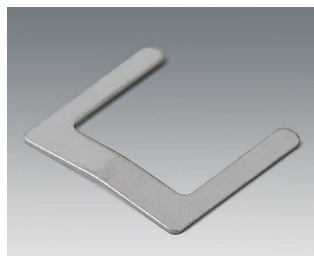


B5011859
Battery compartment lid
ABS (UL 94 HB)
black RAL 9005

Accessory "battery"



A9166001
Set of battery clips, 2 x AAA
Steel
tin-plated



A9166002
Battery contact, 2 x AAA
Steel
tin-plated



A9166003
Battery holder, 2 x AAA
PA 6 (UL 94 HB)
black RAL 9005



A9190002
Set of battery clips,
2xN/2xAA/2xAAA
Steel
tin-plated

ART-CASE



B5111107
 Battery compartment, 2 x AAA
 ABS (UL 94 HB)
 off-white RAL 9002



B5111109
 Battery compartment, 2 x AAA
 ABS (UL 94 HB)
 black RAL 9005

Accessory "protection"



A9199005
 Strain relief
 PA 6
 volcano



B5111707
 Anti-rotation device
 ABS (UL 94 HB)
 off-white RAL 9002

Accessory "wall/holder"



B5111307
 Wall mounting set
 ABS (UL 94 HB)
 off-white RAL 9002



B5111309
 Wall mounting set
 ABS (UL 94 HB)
 black RAL 9005

Accessory "screws"



B5111201
 Set of screws

ART-CASE

Accessory



A9207150
Anti-slide feet 0.256" x 0.079"
transparent

Subject to technical modification without notice. © by OKW Gehäusesysteme, Buchen/Germany.