

MINITEC

Tactile remote control enclosures – perfect design for ‘personal’ electronics

MINITEC plastic enclosures convince the user with their mini-dimensions and maximum-benefits. Choose between “MINITEC EDGE” design, or “MINITEC DROP” shape.

- modern, flat styling ***** iF product design award *****
- easy to wear and always within easy reach, e.g. round your neck or round your wrist, on your key ring or on a belt
- intermediate rings in different versions and colors; TPE material for a pleasant touch sensation and impact protection
- ABS (UL 94 HB); also available in infra-red light-permeable PMMA plexiglas
- recessed operating area for protecting the membrane keypad or decorative foil/label; MINITEC Edge models also with smooth top for push-buttons
- protection class IP 41: design Edge (size M) and Drop (sizes S and M) with intermediate ring in TPE, all others IP 40
- ordered as individual components for multiple type/color combinations, 3 sizes each

To achieve one MINITEC, please order:

1 bottom and top part
1 intermediate ring
(screw supplied with case)

Designer Statement

"Fresh colors and shapes for an active public: you can wear MINITEC close to the body, on a lanyard, belt or wrist strap. Mobile smart home functions and IoT solutions can be optimally integrated in MINITEC. Two design variants – an organic form 'Drop' and a more technical design 'Edge' – in conjunction with colourful applications offer the opportunity to make a system perceptible. A clever enclosure that becomes the visible and tangible ambassador for your product!"

Martin Nußberger, polyform Industrie Design

MINITEC



MINITEC

Applications and Examples

- Many different types of remote control systems
- Specially made for the medical and social fields as well as in the household and in industry, e.g. emergency systems, monitoring and alarm equipment, radio remote control etc.
- Mobile USB solutions, e.g. compact measurement devices with data recording used as data logger sticks
- IoT/IloT applications
- Wearables



A personal alarm on your mobile phone



GPS tracking in real time



LoRa GPS tracker with alarm button



Mobile air quality monitoring



Mobile RFID information system



Mobile Security Solutions for workers



Mobile UHF RFID scanner



Portable ultrasonic device for veterinary medicine



Radio paging systems



Radio transmitter for emergency call system for patients



RFID sensor transponder and data logger



Smart TAG



Tension meter for measuring belt pretension

View Customizing Options

MINITEC

What do you still need for your own very personal product? We can supply enclosures and tuning knobs with all necessary modifications for fitting your electronic components.
Customizing options for Minitec



Machining



Lacquering



Printing



Laser marking



Decor foils



Special material



RFI/EMI shielding



Installation / Assembly
of accessories

Select Versions



B9002806
Bottom and top part ES
PMMA (IR) (UL 94 HB)
black RAL 9005
2.05"x1.26"x0.59"



B9002807
Bottom and top part ES
ABS (UL 94 HB)
off-white RAL 9002
2.05"x1.26"x0.59"



B9002808
Bottom and top part ES
ABS (UL 94 HB)
lava
2.05"x1.26"x0.59"



B9002856
Bottom and top part ES
PMMA (IR) (UL 94 HB)
black RAL 9005
2.05"x1.26"x0.59"



B9002857
Bottom and top part ES
ABS (UL 94 HB)
off-white RAL 9002
2.05"x1.26"x0.59"



B9002858
Bottom and top part ES
ABS (UL 94 HB)
lava
2.05"x1.26"x0.59"



B9002906
Bottom and top part DS
PMMA (IR) (UL 94 HB)
black RAL 9005
2.01"x1.26"x0.51"



B9002907
Bottom and top part DS
ABS (UL 94 HB)
off-white RAL 9002
2.01"x1.26"x0.51"

MINITEC



B9002908
Bottom and top part DS
ABS (UL 94 HB)
lava
2.01"x1.26"x0.51"



B9004806
Bottom and top part EM
PMMA (IR) (UL 94 HB)
black RAL 9005
2.68"x1.65"x0.71"



B9004807
Bottom and top part EM
ABS (UL 94 HB)
off-white RAL 9002
2.68"x1.65"x0.71"



B9004808
Bottom and top part EM
ABS (UL 94 HB)
lava
2.68"x1.65"x0.71"



B9004856
Bottom and top part EM
PMMA (IR) (UL 94 HB)
black RAL 9005
2.68"x1.65"x0.71"



B9004857
Bottom and top part EM
ABS (UL 94 HB)
off-white RAL 9002
2.68"x1.65"x0.71"



B9004858
Bottom and top part EM
ABS (UL 94 HB)
lava
2.68"x1.65"x0.71"



B9004906
Bottom and top part DM
PMMA (IR) (UL 94 HB)
black RAL 9005
2.76"x1.73"x0.63"



B9004907
Bottom and top part DM
ABS (UL 94 HB)
off-white RAL 9002
2.76"x1.73"x0.63"



B9004908
Bottom and top part DM
ABS (UL 94 HB)
lava
2.76"x1.73"x0.63"



B9006806
Bottom and top part EL
PMMA (IR) (UL 94 HB)
black RAL 9005
3.07"x1.89"x0.79"



B9006807
Bottom and top part EL
ABS (UL 94 HB)
off-white RAL 9002
3.07"x1.89"x0.79"



B9006808
Bottom and top part EL
ABS (UL 94 HB)
lava
3.07"x1.89"x0.79"



B9006816
Bottom and top part EL
PMMA (IR) (UL 94 HB)
black RAL 9005
3.07"x1.89"x0.94"



B9006817
Bottom and top part EL
ABS (UL 94 HB)
off-white RAL 9002
3.07"x1.89"x0.94"



B9006818
Bottom and top part EL
ABS (UL 94 HB)
lava
3.07"x1.89"x0.94"

MINITEC



B9006826
Bottom and top part EL
PMMA (IR) (UL 94 HB)
black RAL 9005
3.07"x1.89"x1.02"



B9006827
Bottom and top part EL
ABS (UL 94 HB)
off-white RAL 9002
3.07"x1.89"x1.02"



B9006828
Bottom and top part EL
ABS (UL 94 HB)
lava
3.07"x1.89"x1.02"



B9006856
Bottom and top part EL
PMMA (IR) (UL 94 HB)
black RAL 9005
3.07"x1.89"x0.79"



B9006857
Bottom and top part EL
ABS (UL 94 HB)
off-white RAL 9002
3.07"x1.89"x0.79"



B9006858
Bottom and top part EL
ABS (UL 94 HB)
lava
3.07"x1.89"x0.79"



B9006906
Bottom and top part DL
PMMA (IR) (UL 94 HB)
black RAL 9005
3.31"x2.09"x0.75"



B9006907
Bottom and top part DL
ABS (UL 94 HB)
off-white RAL 9002
3.31"x2.09"x0.75"



B9006908
Bottom and top part DL
ABS (UL 94 HB)
lava
3.31"x2.09"x0.75"

System components to complete



B9002302
Intermediate ring DS
TPE
lava



B9002303
Intermediate ring DS
SEBS (TPE)
orange



B9002304
Intermediate ring DS
SEBS (TPE)
green



B9002305
Intermediate ring DS
TPE
blue

MINITEC



B9002306
 Intermediate ring DS
 PMMA (IR) (UL 94 HB)
 black RAL 9005



B9002307
 Intermediate ring DS
 SEBS (TPE)
 off-white RAL 9002



B9002308
 Intermediate ring DS
 TPE
 volcano



B9002309
 Intermediate ring DS
 ABS (UL 94 HB)
 black RAL 9005



B9002352
 Intermediate ring DS
 TPE
 lava



B9002353
 Intermediate ring DS
 TPE
 orange



B9002354
 Intermediate ring DS
 TPE
 green



B9002355
 Intermediate ring DS
 TPE
 blue



B9002356
 Intermediate ring DS
 PMMA (IR) (UL 94 HB)
 black RAL 9005



B9002357
 Intermediate ring DS
 SEBS (TPE)
 off-white RAL 9002



B9002358
 Intermediate ring DS
 TPE
 volcano



B9002359
 Intermediate ring DS
 ABS (UL 94 HB)
 black RAL 9005



B9002702
 Intermediate ring ES
 TPE
 lava



B9002703
 Intermediate ring ES
 TPE
 orange



B9002704
 Intermediate ring ES
 TPE
 green



B9002705
 Intermediate ring ES
 TPE
 blue

MINITEC



B9002706
 Intermediate ring ES
 PMMA (IR) (UL 94 HB)
 black RAL 9005



B9002707
 Intermediate ring ES
 TPE
 off-white RAL 9002



B9002708
 Intermediate ring ES
 TPE
 volcano



B9002709
 Intermediate ring ES
 ABS (UL 94 HB)
 black RAL 9005



B9002752
 Intermediate ring ES
 TPE
 lava



B9002753
 Intermediate ring ES
 TPE
 orange



B9002754
 Intermediate ring ES
 TPE
 green



B9002755
 Intermediate ring ES
 TPE
 blue



B9002756
 Intermediate ring ES
 PMMA (IR) (UL 94 HB)
 black RAL 9005



B9002757
 Intermediate ring ES
 TPE
 off-white RAL 9002



B9002758
 Intermediate ring ES
 TPE
 volcano



B9002759
 Intermediate ring ES
 ABS (UL 94 HB)
 black RAL 9005



B9004302
 Intermediate ring DM
 TPE
 lava



B9004303
 Intermediate ring DM
 TPE
 orange



B9004304
 Intermediate ring DM
 TPE
 green



B9004305
 Intermediate ring DM
 TPE
 blue

MINITEC



B9004306
 Intermediate ring DM
 PMMA (IR) (UL 94 HB)
 black RAL 9005



B9004307
 Intermediate ring DM
 SEBS (TPE)
 off-white RAL 9002



B9004308
 Intermediate ring DM
 TPE
 volcano



B9004309
 Intermediate ring DM
 ABS (UL 94 HB)
 black RAL 9005



B9004702
 Intermediate ring EM
 TPE
 lava



B9004703
 Intermediate ring EM
 TPE
 orange



B9004704
 Intermediate ring EM
 TPE
 green



B9004705
 Intermediate ring EM
 TPE
 blue



B9004706
 Intermediate ring EM
 PMMA (IR) (UL 94 HB)
 black RAL 9005



B9004707
 Intermediate ring EM
 TPE
 off-white RAL 9002



B9004708
 Intermediate ring EM
 TPE
 volcano



B9004709
 Intermediate ring EM
 ABS (UL 94 HB)
 black RAL 9005



B9004752
 Intermediate ring EM
 TPE
 lava



B9004753
 Intermediate ring EM
 SEBS (TPE)
 orange



B9004754
 Intermediate ring EM
 TPE
 green



B9004755
 Intermediate Ring EM
 TPE
 blue

MINITEC



B9004756
Intermediate ring EM
PMMA (IR) (UL 94 HB)
black RAL 9005



B9004757
Intermediate ring EM
SEBS (TPE)
off-white RAL 9002



B9004758
Intermediate Ring EM
TPE
volcano



B9004759
Intermediate ring EM
ABS (UL 94 HB)
black RAL 9005



B9004776
Intermediate ring EM, Micro USB
5 P, B Type SMT
PMMA (IR) (UL 94 HB)
black RAL 9005



B9004778
Intermediate ring EM, Micro USB
5 P, B Type SMT
SEBS (TPE)
volcano



B9004779
Intermediate ring EM, Micro USB
5 P, B Type SMT
ABS (UL 94 HB)
black RAL 9005



B9004782
Intermediate ring EM, high
SEBS (TPE)
lava



B9004783
Intermediate ring EM, high
TPE
orange



B9004784
Intermediate ring EM, high
SEBS (TPE)
green



B9004785
Intermediate ring EM, high
TPE
blue



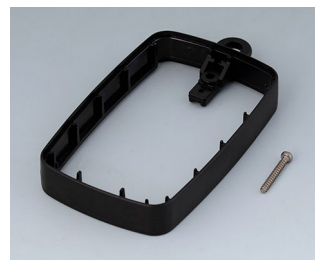
B9004786
Intermediate ring EM, high
PMMA (IR) (UL 94 HB)
black RAL 9005



B9004787
Intermediate ring EM, high
SEBS (TPE)
off-white RAL 9002



B9004788
Intermediate ring EM, high
TPE
volcano

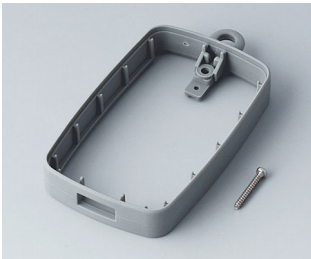


B9004789
Intermediate ring EM, high
ABS (UL 94 HB)
black RAL 9005



B9004796
Intermediate ring EM, USB type
A
PMMA (IR) (UL 94 HB)
black RAL 9005

MINITEC



B9004798
 Intermediate ring EM, USB type
 A
 SEBS (TPE)
 volcano



B9004799
 Intermediate ring EM, USB type
 A
 ABS (UL 94 HB)
 black RAL 9005



B9006302
 Intermediate ring DL
 TPE
 lava



B9006303
 Intermediate ring DL
 TPE
 orange



B9006304
 Intermediate ring DL
 TPE
 green



B9006305
 Intermediate ring DL
 TPE
 blue



B9006306
 Intermediate ring DL
 PMMA (IR) (UL 94 HB)
 black RAL 9005



B9006307
 Intermediate ring DL
 SEBS (TPE)
 off-white RAL 9002



B9006308
 Intermediate ring DL
 TPE
 volcano



B9006309
 Intermediate ring DL
 ABS (UL 94 HB)
 black RAL 9005



B9006702
 Intermediate ring EL
 TPE
 lava



B9006703
 Intermediate ring EL
 TPE
 orange



B9006704
 Intermediate ring EL
 SEBS (TPE)
 green



B9006705
 Intermediate ring EL
 TPE
 blue



B9006706
 Intermediate ring EL
 PMMA (IR) (UL 94 HB)
 black RAL 9005



B9006707
 Intermediate ring EL
 SEBS (TPE)
 off-white RAL 9002

MINITEC



B9006708
 Intermediate ring EL
 TPE
 volcano



B9006709
 Intermediate ring EL
 ABS (UL 94 HB)
 black RAL 9005



B9006752
 Intermediate ring EL
 TPE
 lava



B9006753
 Intermediate ring EL
 TPE
 orange



B9006754
 Intermediate ring EL
 SEBS (TPE)
 green



B9006755
 Intermediate ring EL
 TPE
 blue



B9006756
 Intermediate ring EL
 PMMA (IR) (UL 94 HB)
 black RAL 9005



B9006757
 Intermediate ring EL
 SEBS (TPE)
 off-white RAL 9002



B9006758
 Intermediate ring EL
 TPE
 volcano



B9006759
 Intermediate ring EL
 ABS (UL 94 HB)
 black RAL 9005



B9006782
 Intermediate ring EL
 SEBS (TPE)
 lava



B9006783
 Intermediate ring EL
 TPE
 orange



B9006784
 Intermediate ring EL
 SEBS (TPE)
 green



B9006785
 Intermediate ring EL
 TPE
 blue



B9006786
 Intermediate ring EL
 PMMA (IR) (UL 94 HB)
 black RAL 9005



B9006787
 Intermediate ring EL
 SEBS (TPE)
 off-white RAL 9002

MINITEC



B9006788
Intermediate ring EL
TPE
volcano



B9006789
Intermediate ring EL
ABS (UL 94 HB)
black RAL 9005

Accessory "carrying"



A9164001
Key ring
Steel
nickel-plated
0.81"



B9100033
Wrist strap
black
11.02"



B9100063
Carrying strap, textile lanyard
black
33.86"



B9100073
Carrying strap, textile lanyard
black
35.98"x0.63"



B9106108
Strap eyelet EL
ABS (UL 94 HB)
lava

Accessory



B9100073
Carrying strap, textile lanyard
black
35.98"x0.63"