

# COMTEC

## Ergonomic sloping front plastic enclosures

Modern, flat styling characterizes the COMTEC family of plastic enclosures. Rounded surfaces give the users a soft feeling and emphasize the ease of use.

- ergonomic keypad enclosures with operating face inclined at 10°, a real asset when operating and reading
- large area for interfaces at the top, ideal for D-sub-plug connectors, round connectors etc.
- ideal for desktop or wall mounted electronics
- seven sizes, two colors
- flat or raised bottom part for large-volume components
- version I without battery compartment lid
- version II with battery compartment lid
- screw-in battery cradles 4 x AA, 1 x 9 V or 2 x 9 V cells are ordered separately for version II cases
- recess in top for a membrane keypad or label
- protection class IP 40
- self-adhesive case feet ensure reliable desk-top positioning
- wall suspension element as accessory
- internal fastening pillars for PCBs and components



# COMTEC

## Applications and Examples

- Data collection terminals
- Communications devices
- Access control, security
- Medical, laboratory, wellness
- Health care
- Point-of-sale systems
- Measuring and controlling
- Industrial regulation



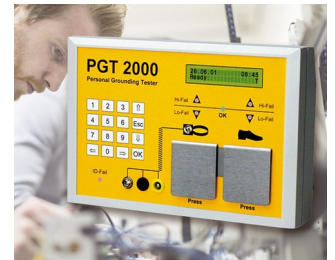
Controller for LED lighting in image processing and microscopy



EMG bio-feedback for incontinence diagnostics and therapy



Stationary system for long-term EEG recordings



System for preventing electrostatic charges

## View Customizing Options

What do you still need for your own very personal product? We can supply enclosures and tuning knobs with all necessary modifications for fitting your electronic components.  
Customizing options for Comtec



Machining



Lacquering



Printing



Laser marking



Decor foils



Special material



RFI/EMI shielding



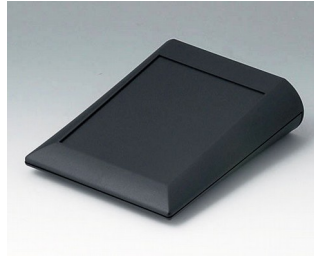
Installation / Assembly of accessories

# COMTEC

## Select Versions



**A0612007**  
COMTEC 120 F, Vers. I  
ABS (UL 94 HB)  
off-white RAL 9002  
4.72"x5.91"x1.69"  
IP 40



**A0612009**  
COMTEC 120 F, Vers. I  
ABS (UL 94 HB)  
black RAL 9005  
4.72"x5.91"x1.69"  
IP 40



**A0612107**  
COMTEC 120 H, Vers. I  
ABS (UL 94 HB)  
off-white RAL 9002  
4.72"x5.91"x2.47"  
IP 40



**A0612109**  
COMTEC 120 H, Vers. I  
ABS (UL 94 HB)  
black RAL 9005  
4.72"x5.91"x2.47"  
IP 40



**A0615007**  
COMTEC 150 F, Vers. I  
ABS (UL 94 HB)  
off-white RAL 9002  
5.91"x7.87"x2.03"  
IP 40



**A0615009**  
COMTEC 150 F, Vers. I  
ABS (UL 94 HB)  
black RAL 9005  
5.91"x7.87"x2.03"  
IP 40



**A0615107**  
COMTEC 150 H, Vers. I  
ABS (UL 94 HB)  
off-white RAL 9002  
5.91"x7.87"x2.81"  
IP 40



**A0615109**  
COMTEC 150 H, Vers. I  
ABS (UL 94 HB)  
black RAL 9005  
5.91"x7.87"x2.81"  
IP 40



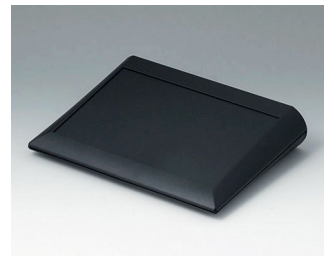
**A0615117**  
COMTEC 150 H, Vers. II  
ABS (UL 94 HB)  
off-white RAL 9002  
5.91"x7.87"x2.81"  
IP 40



**A0615119**  
COMTEC 150 H, Vers. II  
ABS (UL 94 HB)  
black RAL 9005  
5.91"x7.87"x2.81"  
IP 40



**A0620007**  
COMTEC 200 F, Vers. I  
ABS (UL 94 HB)  
off-white RAL 9002  
7.87"x5.91"x1.69"  
IP 40



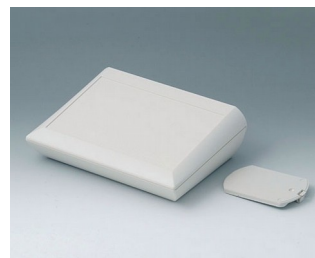
**A0620009**  
COMTEC 200 F, Vers. I  
ABS (UL 94 HB)  
black RAL 9005  
7.87"x5.91"x1.69"  
IP 40



**A0620107**  
COMTEC 200 H, Vers. I  
ABS (UL 94 HB)  
off-white RAL 9002  
7.87"x5.91"x2.47"  
IP 40



**A0620109**  
COMTEC 200 H, Vers. I  
ABS (UL 94 HB)  
black RAL 9005  
7.87"x5.91"x2.47"  
IP 40



**A0620117**  
COMTEC 200 H, Vers. II  
ABS (UL 94 HB)  
off-white RAL 9002  
7.87"x5.91"x2.47"  
IP 40



**A0620119**  
COMTEC 200 H, Vers. II  
ABS (UL 94 HB)  
black RAL 9005  
7.87"x5.91"x2.47"  
IP 40

# COMTEC

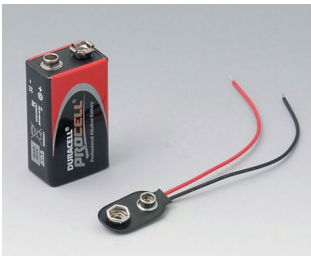


**A0629107**  
 COMTEC 290 H, Vers. I  
 ABS (UL 94 HB)  
 off-white RAL 9002  
 11.42"x7.87"x2.97"  
 IP 40



**A0629109**  
 COMTEC 290 H, Vers. I  
 ABS (UL 94 HB)  
 black RAL 9005  
 11.42"x7.87"x2.97"  
 IP 40

## Accessory "battery"



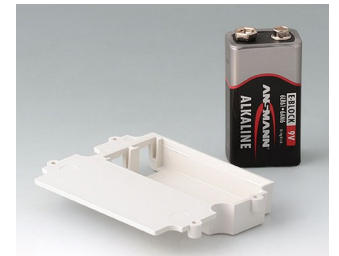
**A9160003**  
 Plug-in contact, 1 x 9 V



**A9161002**  
 Set of battery clips, 2 x 9 V or 4 x AA  
 Steel  
 tin-plated



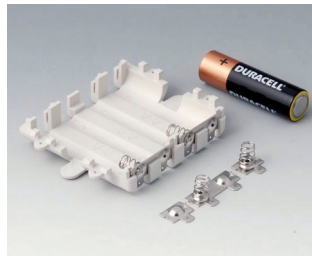
**A9174002**  
 Battery compartment, 2 x 9 V  
 ABS (UL 94 HB)  
 off-white RAL 9002



**A9174003**  
 Battery compartment, 1 x 9 V  
 ABS (UL 94 HB)  
 off-white RAL 9002

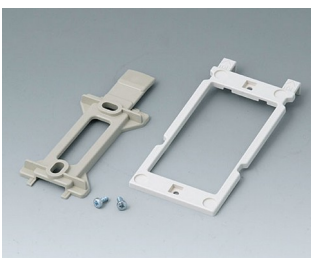


**A9174006**  
 Set of battery clips, 1 x 9 V  
 Steel  
 tin-plated

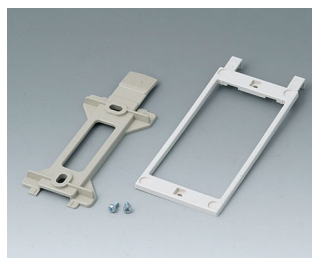


**A9345217**  
 Set of battery compartment, 4 x AA  
 ABS (UL 94 HB)  
 off-white RAL 9002

## Accessory "wall/holder"



**B1350048**  
 Wall suspension elements  
 ABS (UL 94 HB)  
 pebble gray RAL 7032



**B1360048**  
 Wall suspension elements  
 ABS (UL 94 HB)  
 pebble gray RAL 7032

# COMTEC

## Accessory "screws"



A9199008  
Set of screws

Subject to technical modification without notice. © by OKW Gehäusesysteme, Buchen/Germany.