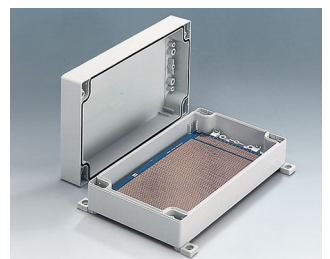
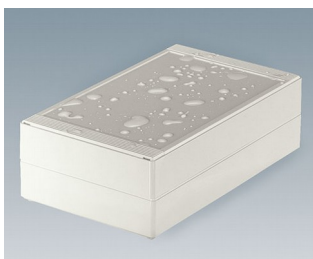
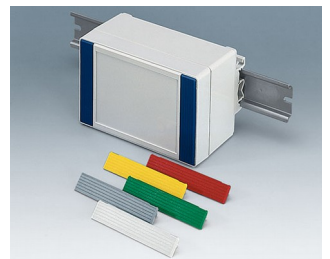
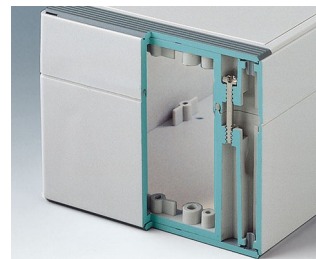


ROBUST-BOX

Universal IP 66 plastic enclosures

Both case shells of the ROBUST-BOX are equipped with pre-molded threads. As a result, users can decide whether the flat or the high part of the case is used as the bottom part.

- versatile, sealed enclosures in eleven basic dimensions, different heights and two standard materials
- ABS (UL 94 HB), approved as a terminal mounting case
- PC (UL 94 HB), a solid and robust case, with high heat resistance for use in adverse environments
- usable as a handheld, desktop or wall mount enclosure, and also as a DIN rail enclosure (with accessory DIN rail clips)
- easy-assembly; the case shells can be used as either the top or the base section
- both parts with recessed operating area for protecting membrane keypads or product labels
- the cover fixings are outside of the sealed area; the fixing screws are rust proof and captured in the top part
- hidden screw shafts for wall mounting or external wall mounting brackets
- colored cover strips for coding (as an alternative to the standard version in light gray)
- internal fastening pillars for PCBs and components
- extensive range of accessories: case feet, hinge, fastening elements to DIN rails, PCB support for mounting pre-assembled PCB units etc.



ROBUST-BOX

Applications and Examples

- These robust enclosures can be used for both electrical and electronic installations, for example heating, climate, ventilation, machine building and construction equipment
- Also, push-button controllers, sensors and measuring equipment
- Gateways



Fill level measurement in process technology



Humidity and temperature measuring unit



Measuring, regulating and metering unit for water quality



Portable metal detector



Robust monitoring systems



Sensor for air pollution



Stationary gas detection system

View Customizing Options

What do you still need for your own very personal product? We can supply enclosures and tuning knobs with all necessary modifications for fitting your electronic components. Customizing options for Robust-Box



Machining



Lacquering



Printing



Laser marking



Decor foils



Special material



RFI/EMI shielding



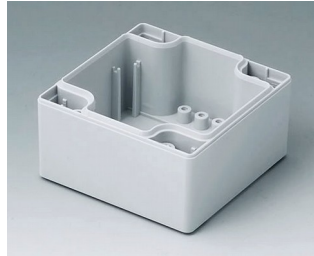
Installation / Assembly of accessories

ROBUST-BOX

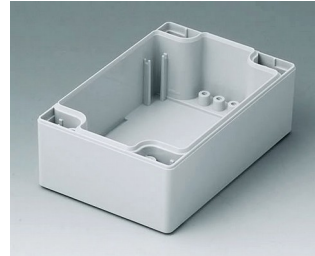
Select Versions



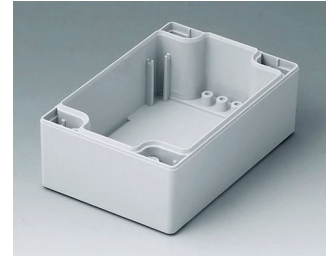
C1080801
Case shell 3.150", with tongue
ABS (UL 94 HB)
light gray RAL 7035
3.15"x3.15"x1.57"



C1080802
Case shell 3.150", with tongue
PC (UL 94 HB)
light gray RAL 7035
3.15"x3.15"x1.57"



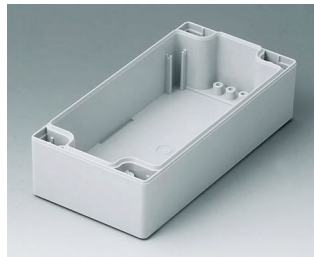
C1081201
Case shell 3.150", with tongue
ABS (UL 94 HB)
light gray RAL 7035
4.72"x3.15"x1.57"



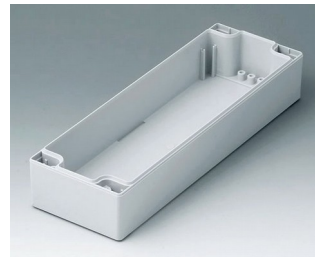
C1081202
Case shell 3.150", with tongue
PC (UL 94 HB)
light gray RAL 7035
4.72"x3.15"x1.57"



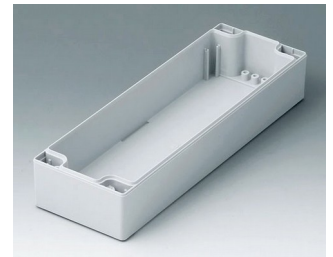
C1081601
Case shell 3.150", with tongue
ABS (UL 94 HB)
light gray RAL 7035
6.30"x3.15"x1.57"



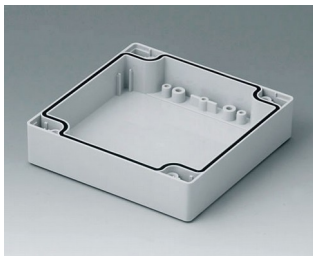
C1081602
Case shell 3.150", with tongue
PC (UL 94 HB)
light gray RAL 7035
6.30"x3.15"x1.57"



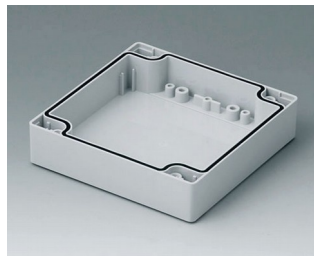
C1082401
Case shell 3.150", with tongue
ABS (UL 94 HB)
light gray RAL 7035
9.45"x3.15"x1.57"



C1082402
Case shell 3.150", with tongue
PC (UL 94 HB)
light gray RAL 7035
9.45"x3.15"x1.57"



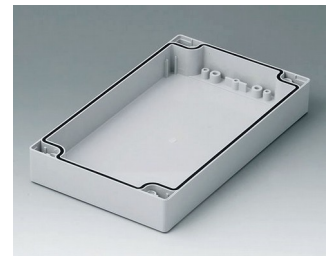
C1121201
Case shell 4.724", with groove
ABS (UL 94 HB)
light gray RAL 7035
4.72"x4.72"x1.18"



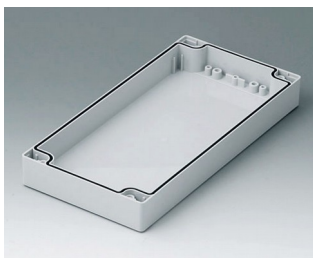
C1121202
Case shell 4.724", with groove
PC (UL 94 HB)
light gray RAL 7035
4.72"x4.72"x1.18"



C1122001
Case shell 4.724", with groove
ABS (UL 94 HB)
light gray RAL 7035
7.87"x4.72"x1.18"



C1122002
Case shell 4.724", with groove
PC (UL 94 HB)
light gray RAL 7035
7.87"x4.72"x1.18"



C1122401
Case shell 4.724", with groove
ABS (UL 94 HB)
light gray RAL 7035
9.45"x4.72"x1.18"



C1122402
Case shell 4.724", with groove
PC (UL 94 HB)
light gray RAL 7035
9.45"x4.72"x1.18"



C1161601
Case shell 6.299", with groove
ABS (UL 94 HB)
light gray RAL 7035
6.30"x6.30"x1.18"



C1161602
Case shell 6.299", with groove
PC (UL 94 HB)
light gray RAL 7035
6.30"x6.30"x1.18"

ROBUST-BOX



C1162401
Case shell 6.299", with groove
ABS (UL 94 HB)
light gray RAL 7035
9.45"x6.30"x1.18"



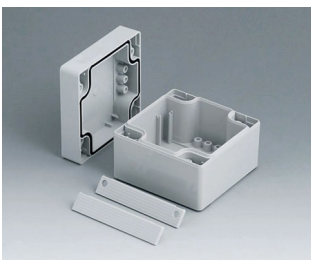
C1162402
Case shell 6.299", with groove
PC (UL 94 HB)
light gray RAL 7035
9.45"x6.30"x1.18"



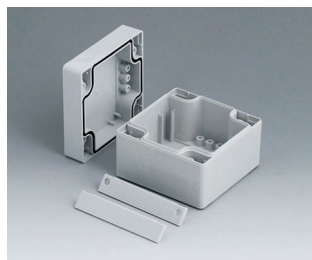
C1203001
Case shell 7.874", with tongue
ABS (UL 94 HB)
light gray RAL 7035
11.81"x7.87"x1.57"



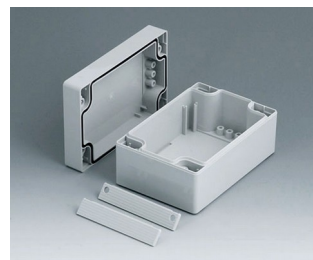
C1243601
Case shell 9.449", with tongue
ABS (UL 94 HB)
light gray RAL 7035
14.17"x9.45"x1.57"



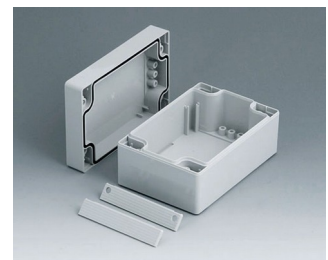
C2008081
ROBUST-BOX WIDTH 3.150",
Vers. I
ABS (UL 94 HB)
light gray RAL 7035
3.15"x3.15"x2.36"
IP 66



C2008082
ROBUST-BOX WIDTH 3.150",
Vers. II
PC (UL 94 HB)
light gray RAL 7035
3.15"x3.15"x2.36"
IP 66



C2008121
ROBUST-BOX WIDTH 3.150",
Vers. I
ABS (UL 94 HB)
light gray RAL 7035
4.72"x3.15"x2.36"
IP 66



C2008122
ROBUST-BOX WIDTH 3.150",
Vers. II
PC (UL 94 HB)
light gray RAL 7035
4.72"x3.15"x2.36"
IP 66



C2008161
ROBUST-BOX WIDTH 3.150",
Vers. I
ABS (UL 94 HB)
light gray RAL 7035
6.30"x3.15"x2.36"
IP 66



C2008162
ROBUST-BOX WIDTH 3.150",
Vers. II
PC (UL 94 HB)
light gray RAL 7035
6.30"x3.15"x2.36"
IP 66



C2008241
ROBUST-BOX WIDTH 3.150",
Vers. I
ABS (UL 94 HB)
light gray RAL 7035
9.45"x3.15"x2.36"
IP 66



C2008242
ROBUST-BOX WIDTH 3.150",
Vers. II
PC (UL 94 HB)
light gray RAL 7035
9.45"x3.15"x2.36"
IP 66



C2012121
ROBUST-BOX WIDTH 4.724",
Vers. I
ABS (UL 94 HB)
light gray RAL 7035
4.72"x4.72"x2.36"
IP 66



C2012122
ROBUST-BOX WIDTH 4.724",
Vers. II
PC (UL 94 HB)
light gray RAL 7035
4.72"x4.72"x2.36"
IP 66



C2012201
ROBUST-BOX WIDTH 4.724",
Vers. I
ABS (UL 94 HB)
light gray RAL 7035
7.87"x4.72"x2.36"
IP 66



C2012202
ROBUST-BOX WIDTH 4.724",
Vers. II
PC (UL 94 HB)
light gray RAL 7035
7.87"x4.72"x2.36"
IP 66

ROBUST-BOX



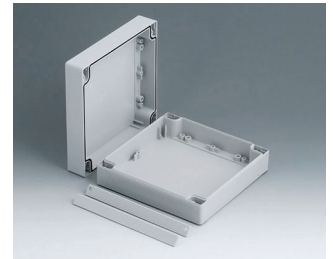
C2012241
 ROBUST-BOX WIDTH 4.724",
 Vers. I
 ABS (UL 94 HB)
 light gray RAL 7035
 9.45"x4.72"x2.36"
 IP 66



C2012242
 ROBUST-BOX WIDTH 4.724",
 Vers. II
 PC (UL 94 HB)
 light gray RAL 7035
 9.45"x4.72"x2.36"
 IP 66



C2016161
 ROBUST-BOX WIDTH 6.299",
 Vers. I
 ABS (UL 94 HB)
 light gray RAL 7035
 6.30"x6.30"x2.36"
 IP 66



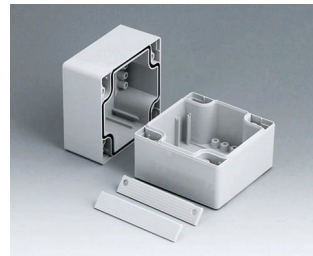
C2016162
 ROBUST-BOX WIDTH 6.299",
 Vers. II
 PC (UL 94 HB)
 light gray RAL 7035
 6.30"x6.30"x2.36"
 IP 66



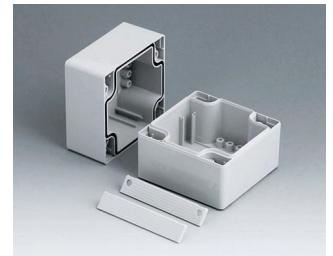
C2016241
 ROBUST-BOX WIDTH 6.299",
 Vers. I
 ABS (UL 94 HB)
 light gray RAL 7035
 9.45"x6.30"x2.36"
 IP 66



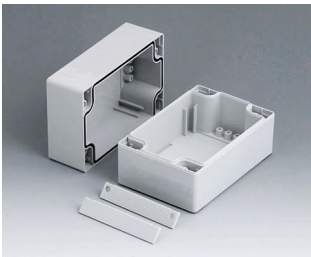
C2016242
 ROBUST-BOX WIDTH 6.299",
 Vers. II
 PC (UL 94 HB)
 light gray RAL 7035
 9.45"x6.30"x2.36"
 IP 66



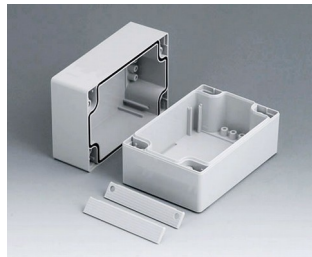
C2108081
 ROBUST-BOX WIDTH 3.150",
 Vers. I
 ABS (UL 94 HB)
 light gray RAL 7035
 3.15"x3.15"x3.15"
 IP 66



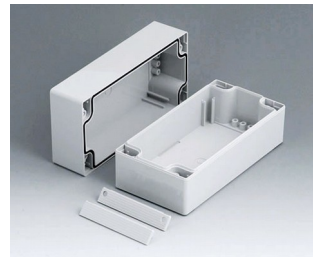
C2108082
 ROBUST-BOX WIDTH 3.150",
 Vers. II
 PC (UL 94 HB)
 light gray RAL 7035
 3.15"x3.15"x3.15"
 IP 66



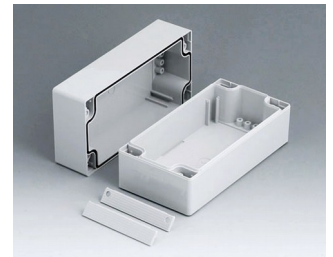
C2108121
 ROBUST-BOX WIDTH 3.150",
 Vers. I
 ABS (UL 94 HB)
 light gray RAL 7035
 4.72"x3.15"x3.15"
 IP 66



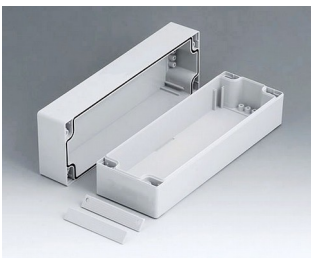
C2108122
 ROBUST-BOX WIDTH 3.150",
 Vers. II
 PC (UL 94 HB)
 light gray RAL 7035
 4.72"x3.15"x3.15"
 IP 66



C2108161
 ROBUST-BOX WIDTH 3.150",
 Vers. I
 ABS (UL 94 HB)
 light gray RAL 7035
 6.30"x3.15"x3.15"
 IP 66



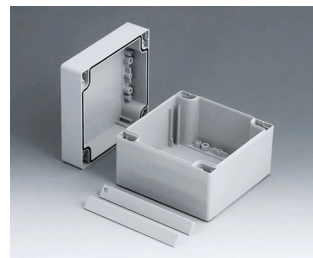
C2108162
 ROBUST-BOX WIDTH 3.150",
 Vers. II
 PC (UL 94 HB)
 light gray RAL 7035
 6.30"x3.15"x3.15"
 IP 66



C2108241
 ROBUST-BOX WIDTH 3.150",
 Vers. I
 ABS (UL 94 HB)
 light gray RAL 7035
 9.45"x3.15"x3.15"
 IP 66



C2108242
 ROBUST-BOX WIDTH 3.150",
 Vers. II
 PC (UL 94 HB)
 light gray RAL 7035
 9.45"x3.15"x3.15"
 IP 66

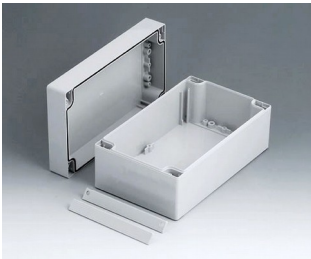


C2112121
 ROBUST-BOX WIDTH 4.724",
 Vers. I
 ABS (UL 94 HB)
 light gray RAL 7035
 4.72"x4.72"x3.54"
 IP 66

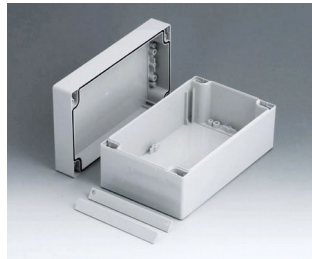


C2112122
 ROBUST-BOX WIDTH 4.724",
 Vers. II
 PC (UL 94 HB)
 light gray RAL 7035
 4.72"x4.72"x3.54"
 IP 66

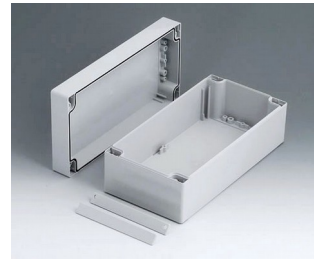
ROBUST-BOX



C2112201
ROBUST-BOX WIDTH 4.724",
Vers. I
ABS (UL 94 HB)
light gray RAL 7035
7.87"x4.72"x3.54"
IP 66



C2112202
ROBUST-BOX WIDTH 4.724",
Vers. II
PC (UL 94 HB)
light gray RAL 7035
7.87"x4.72"x3.54"
IP 66



C2112241
ROBUST-BOX WIDTH 4.724",
Vers. I
ABS (UL 94 HB)
light gray RAL 7035
9.45"x4.72"x3.54"
IP 66



C2112242
ROBUST-BOX WIDTH 4.724",
Vers. II
PC (UL 94 HB)
light gray RAL 7035
9.45"x4.72"x3.54"
IP 66



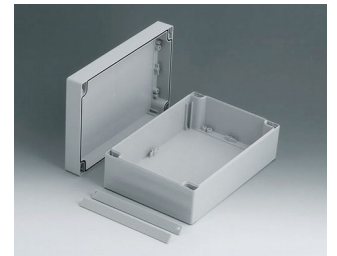
C2116161
ROBUST-BOX WIDTH 6.299",
Vers. I
ABS (UL 94 HB)
light gray RAL 7035
6.30"x6.30"x3.54"
IP 66



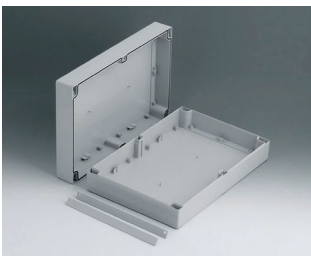
C2116162
ROBUST-BOX WIDTH 6.299",
Vers. II
PC (UL 94 HB)
light gray RAL 7035
6.30"x6.30"x3.54"
IP 66



C2116241
ROBUST-BOX WIDTH 6.299",
Vers. I
ABS (UL 94 HB)
light gray RAL 7035
9.45"x6.30"x3.54"
IP 66



C2116242
ROBUST-BOX WIDTH 6.299",
Vers. II
PC (UL 94 HB)
light gray RAL 7035
9.45"x6.30"x3.54"
IP 66



C2120301
ROBUST-BOX WIDTH 7.874",
Vers. I
ABS (UL 94 HB)
light gray RAL 7035
11.81"x7.87"x3.15"
IP 66



C2124361
ROBUST-BOX WIDTH 9.449",
Vers. I
ABS (UL 94 HB)
light gray RAL 7035
14.17"x9.45"x3.15"
IP 66



C2416241
ROBUST-BOX WIDTH 6.299",
Vers. I
ABS (UL 94 HB)
light gray RAL 7035
9.45"x6.30"x4.72"
IP 66



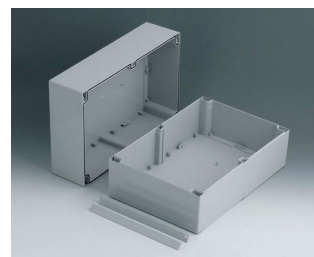
C2416242
ROBUST-BOX WIDTH 6.299",
Vers. II
PC (UL 94 HB)
light gray RAL 7035
9.45"x6.30"x4.72"
IP 66



C2420301
ROBUST-BOX WIDTH 7.874",
Vers. I
ABS (UL 94 HB)
light gray RAL 7035
11.81"x7.87"x4.72"
IP 66



C2424361
ROBUST-BOX WIDTH 9.449",
Vers. I
ABS (UL 94 HB)
light gray RAL 7035
14.17"x9.45"x4.72"
IP 66



C2520301
ROBUST-BOX WIDTH 7.874",
Vers. I
ABS (UL 94 HB)
light gray RAL 7035
11.81"x7.87"x6.30"
IP 66



C2524361
ROBUST-BOX WIDTH 9.449",
Vers. I
ABS (UL 94 HB)
light gray RAL 7035
14.17"x9.45"x6.30"
IP 66

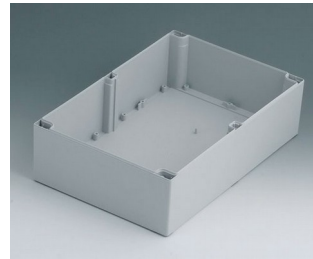
ROBUST-BOX



C3162401
Case shell 6.299", with groove
ABS (UL 94 HB)
light gray RAL 7035
9.45"x6.30"x2.36"



C3162402
Case shell 6.299", with groove
PC (UL 94 HB)
light gray RAL 7035
9.45"x6.30"x2.36"



C4203001
Case shell 7.874", with tongue
ABS (UL 94 HB)
light gray RAL 7035
11.81"x7.87"x3.15"



C4243601
Case shell 9.449", with tongue
ABS (UL 94 HB)
light gray RAL 7035
14.17"x9.45"x3.15"

System components to complete



C0080801
Case shell 3.150", with groove
ABS (UL 94 HB)
light gray RAL 7035
3.15"x3.15"x0.79"



C0080802
Case shell 3.150", with groove
PC (UL 94 HB)
light gray RAL 7035
3.15"x3.15"x0.79"



C0081201
Case shell 3.150", with groove
ABS (UL 94 HB)
light gray RAL 7035
4.72"x3.15"x0.79"



C0081202
Case shell 3.150", with groove
PC (UL 94 HB)
light gray RAL 7035
4.72"x3.15"x0.79"



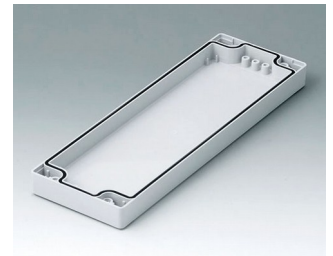
C0081601
Case shell 3.150", with groove
ABS (UL 94 HB)
light gray RAL 7035
6.30"x3.15"x0.79"



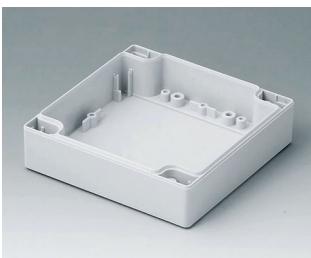
C0081602
Case shell 3.150", with groove
PC (UL 94 HB)
light gray RAL 7035
6.30"x3.15"x0.79"



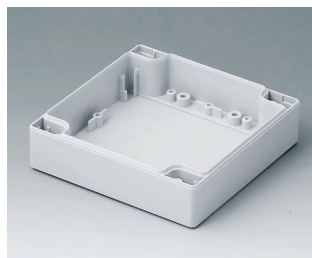
C0082401
Case shell 3.150", with groove
ABS (UL 94 HB)
light gray RAL 7035
9.45"x3.15"x0.79"



C0082402
Case shell 3.150", with groove
PC (UL 94 HB)
light gray RAL 7035
9.45"x3.15"x0.79"



C0121201
Case shell 4.724", with tongue
ABS (UL 94 HB)
light gray RAL 7035
4.72"x4.72"x1.18"



C0121202
Case shell 4.724", with tongue
PC (UL 94 HB)
light gray RAL 7035
4.72"x4.72"x1.18"

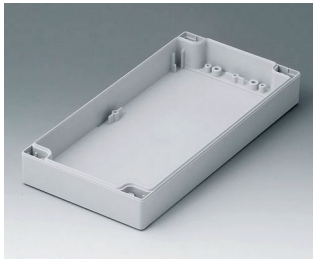


C0122001
Case shell 4.724", with tongue
ABS (UL 94 HB)
light gray RAL 7035
7.87"x4.72"x1.18"



C0122002
Case shell 4.724", with tongue
PC (UL 94 HB)
light gray RAL 7035
7.87"x4.72"x1.18"

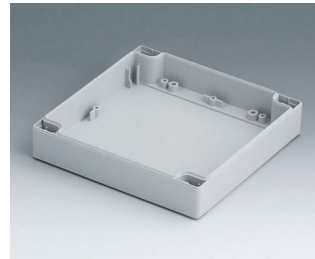
ROBUST-BOX



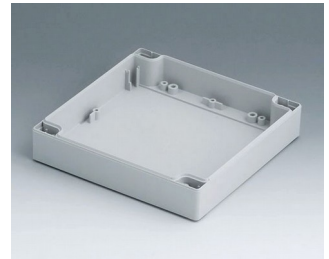
C0122401
Case shell 4.724", with tongue
ABS (UL 94 HB)
light gray RAL 7035
9.45"x4.72"x1.18"



C0122402
Case shell 4.724", with tongue
PC (UL 94 HB)
light gray RAL 7035
9.45"x4.72"x1.18"



C0161601
Case shell 6.299", with tongue
ABS (UL 94 HB)
light gray RAL 7035
6.30"x6.30"x1.18"



C0161602
Case shell 6.299", with tongue
PC (UL 94 HB)
light gray RAL 7035
6.30"x6.30"x1.18"



C0162401
Case shell 6.299", with tongue
ABS (UL 94 HB)
light gray RAL 7035
9.45"x6.30"x1.18"



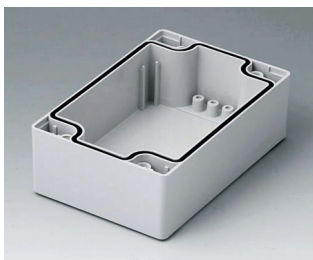
C0162402
Case shell 6.299", with tongue
PC (UL 94 HB)
light gray RAL 7035
9.45"x6.30"x1.18"



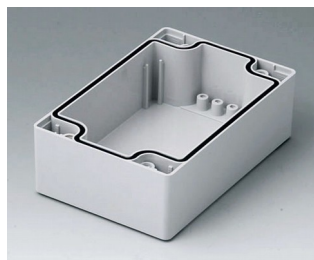
C2080801
Case shell 3.150", with groove
ABS (UL 94 HB)
light gray RAL 7035
3.15"x3.15"x1.57"



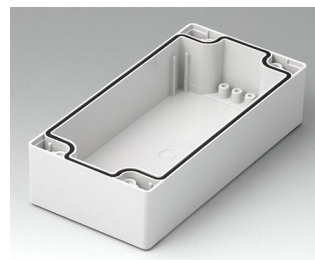
C2080802
Case shell 3.150", with groove
PC (UL 94 HB)
light gray RAL 7035
3.15"x3.15"x1.57"



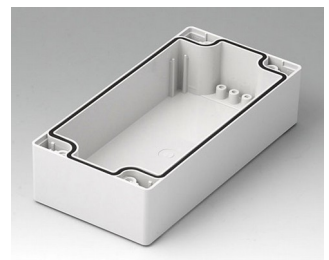
C2081201
Case shell 3.150", with groove
ABS (UL 94 HB)
light gray RAL 7035
4.72"x3.15"x1.57"



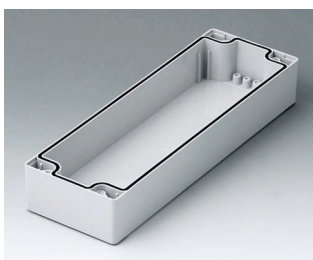
C2081202
Case shell 3.150", with groove
PC (UL 94 HB)
light gray RAL 7035
4.72"x3.15"x1.57"



C2081601
Case shell 3.150", with groove
ABS (UL 94 HB)
light gray RAL 7035
6.30"x3.15"x1.57"



C2081602
Case shell 3.150", with groove
PC (UL 94 HB)
light gray RAL 7035
6.30"x3.15"x1.57"



C2082401
Case shell 3.150", with groove
ABS (UL 94 HB)
light gray RAL 7035
9.45"x3.15"x1.57"



C2082402
Case shell 3.150", with groove
PC (UL 94 HB)
light gray RAL 7035
9.45"x3.15"x1.57"



C2121201
Case shell 4.724", with tongue
ABS (UL 94 HB)
light gray RAL 7035
4.72"x4.72"x2.36"

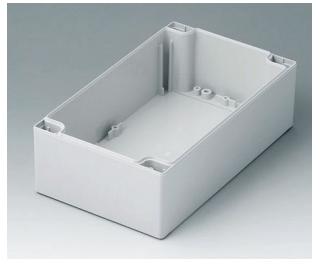


C2121202
Case shell 4.724", with tongue
PC (UL 94 HB)
light gray RAL 7035
4.72"x4.72"x2.36"

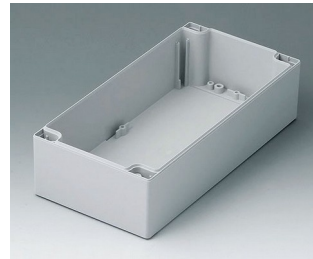
ROBUST-BOX



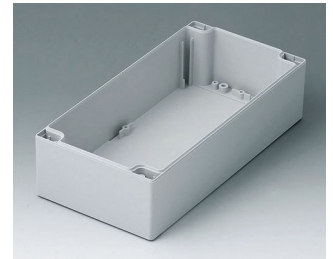
C2122001
 Case shell 4.724", with tongue
 ABS (UL 94 HB)
 light gray RAL 7035
 7.87"x4.72"x2.36"



C2122002
 Case shell 4.724", with tongue
 PC (UL 94 HB)
 light gray RAL 7035
 7.87"x4.72"x2.36"



C2122401
 Case shell 4.724", with tongue
 ABS (UL 94 HB)
 light gray RAL 7035
 9.45"x4.72"x2.36"



C2122402
 Case shell 4.724", with tongue
 PC (UL 94 HB)
 light gray RAL 7035
 9.45"x4.72"x2.36"



C2161601
 Case shell 6.299", with tongue
 ABS (UL 94 HB)
 light gray RAL 7035
 6.30"x6.30"x2.36"



C2161602
 Case shell 6.299", with tongue
 PC (UL 94 HB)
 light gray RAL 7035
 6.30"x6.30"x2.36"



C2162401
 Case shell 6.299", with tongue
 ABS (UL 94 HB)
 light gray RAL 7035
 9.45"x6.30"x2.36"



C2162402
 Case shell 6.299", with tongue
 PC (UL 94 HB)
 light gray RAL 7035
 9.45"x6.30"x2.36"



C2203001
 Case shell 7.874", with groove
 ABS (UL 94 HB)
 light gray RAL 7035
 11.81"x7.87"x1.57"



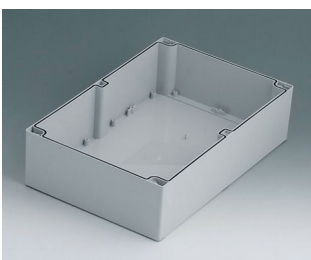
C2243601
 Case shell 9.449", with groove
 ABS (UL 94 HB)
 light gray RAL 7035
 14.17"x9.45"x1.57"



C2299001
 Assembly kit



C2299002
 Assembly kit



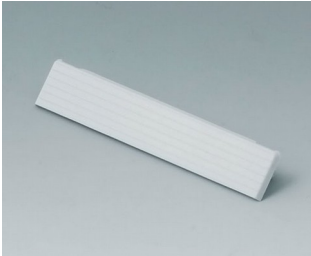
C5203001
 Case shell 7.874", with groove
 ABS (UL 94 HB)
 light gray RAL 7035
 11.81"x7.87"x3.15"



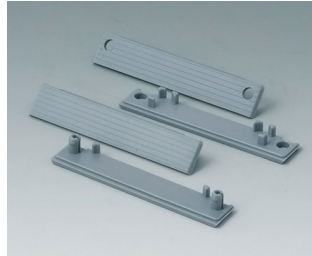
C5243601
 Case shell 9.449", with groove
 ABS (UL 94 HB)
 light gray RAL 7035
 14.17"x9.45"x3.15"

ROBUST-BOX

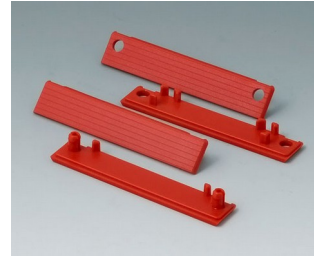
Accessory to complete



C2200801
Cover strips 3.150", without
holes
PC (UL 94 HB)
light gray RAL 7035



C2201082
Cover strips 3.150"
PC (UL 94 HB)
silver gray RAL 7001



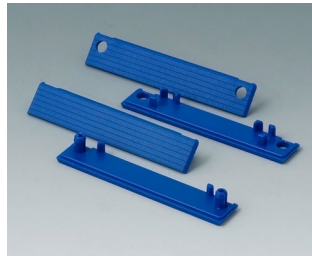
C2201084
Cover strips 3.150"
PC (UL 94 HB)
red RAL 3020



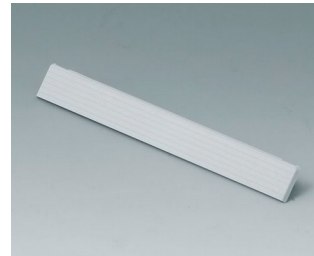
C2201085
Cover strips 3.150"
PC (UL 94 HB)
yellow RAL 1023



C2201086
Cover strips 3.150"
PC (UL 94 HB)
green RAL 6024



C2201087
Cover strips 3.150"
PC (UL 94 HB)
blue RAL 5017



C2201201
Cover strips 4.724", without
holes
PC (UL 94 HB)
light gray RAL 7035



C2201601
Cover strips 6.299", without
holes
PC (UL 94 HB)
light gray RAL 7035



C2202001
Cover strips 7.874", without
holes
PC (UL 94 HB)
light gray RAL 7035



C2202401
Cover strips 9.449", without
holes
PC (UL 94 HB)
light gray RAL 7035



C2203123
Cover strips 4.724"
PC (UL 94 HB)
silver gray RAL 7001



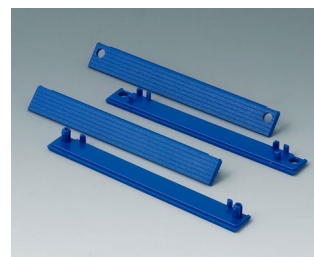
C2203124
Cover strips 4.724"
PC (UL 94 HB)
red RAL 3020



C2203125
Cover strips 4.724"
PC (UL 94 HB)
yellow RAL 1023



C2203126
Cover strips 4.724"
PC (UL 94 HB)
green RAL 6024



C2203127
Cover strips 4.724"
PC (UL 94 HB)
blue RAL 5017



C2204162
Cover strips 6.299"
PC (UL 94 HB)
silver gray RAL 7001

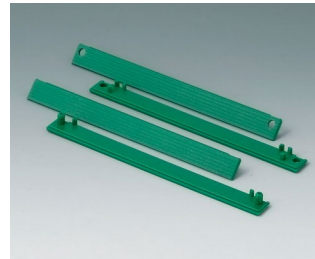
ROBUST-BOX



C2204164
 Cover strips 6.299"
 PC (UL 94 HB)
 red RAL 3020



C2204165
 Cover strips 6.299"
 PC (UL 94 HB)
 yellow RAL 1023



C2204166
 Cover strips 6.299"
 PC (UL 94 HB)
 green RAL 6024



C2204167
 Cover strips 6.299"
 PC (UL 94 HB)
 blue RAL 5017



C2210801
 Cover strips 3.150", with holes
 PC (UL 94 HB)
 light gray RAL 7035



C2211201
 Cover strips 4.724", with holes
 PC (UL 94 HB)
 light gray RAL 7035



C2211601
 Cover strips 6.299", with holes
 PC (UL 94 HB)
 light gray RAL 7035



C2212001
 Cover strips 7.874", with holes
 PC (UL 94 HB)
 light gray RAL 7035



C2212401
 Cover strips 9.449", with holes
 PC (UL 94 HB)
 light gray RAL 7035

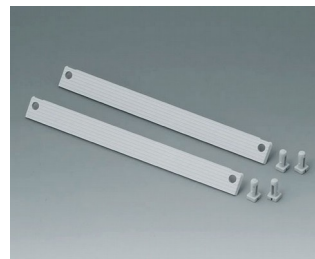
Accessory "protection"



C2299040
 Security plug
 PA 6 (UL 94 HB)
 light gray RAL 7035



C2299042
 Security kit width 4.724"
 PA 6 (UL 94 HB)
 light gray RAL 7035



C2299046
 Security kit width 6.299"
 PA 6 (UL 94 HB)
 light gray RAL 7035



C2299048
 Security kit width 3.150"
 PA 6 (UL 94 HB)
 light gray RAL 7035

ROBUST-BOX



C2306917
 Pressure equalization element
 M6x0.030"
 PA 6 (UL 94 HB)
 light gray RAL 7035
 IP 56



C2310917
 Pressure equalization element
 M10x0.039"
 PA 6 (UL 94 HB)
 light gray RAL 7035
 IP 56

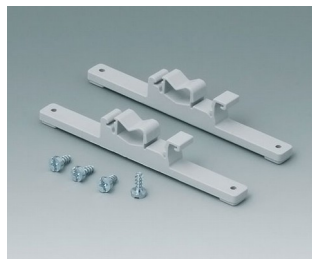


C2320137
 Cable grommet
 EPDM
 light gray RAL 7035
 IP 67

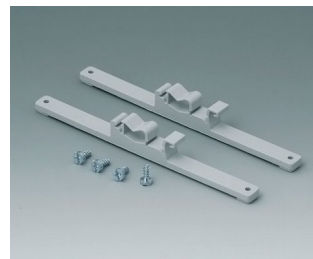
Accessory "wall/holder"



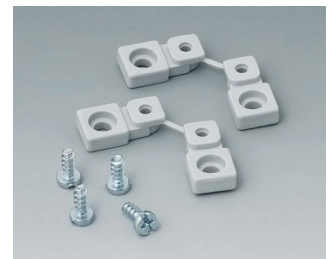
C2201088
 Fastening elements to DIN-Rails
 PA 6
 light gray RAL 7035



C2203128
 Fastening elements to DIN-Rails
 PA 6
 light gray RAL 7035



C2204168
 Fastening elements to DIN-Rails
 PA 6
 light gray RAL 7035



C2299028
 Wall mounting brackets
 PA 6 (UL 94 HB)
 light gray RAL 7035



C2299031
 Securing hinge for the cover
 PP
 natural-colored



C2299088
 Hinge
 PA 6
 light gray RAL 7035

Accessory "screws"



A0306031
 Self-tapping screws 0.118" x
 0.236" (PZ1)



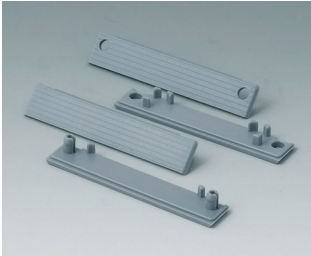
A0308031
 Self-tapping screws 0.118" x
 0.315" (PZ1)



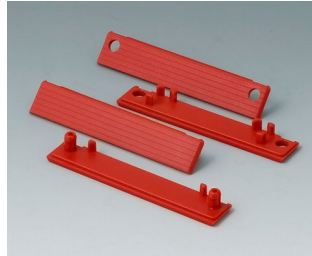
A0308132
 Self-tapping screw 0.118" x
 0.315" (T10)
 Stainless steel

ROBUST-BOX

Accessory



C2201082
Cover strips 3.150"
PC (UL 94 HB)
silver gray RAL 7001



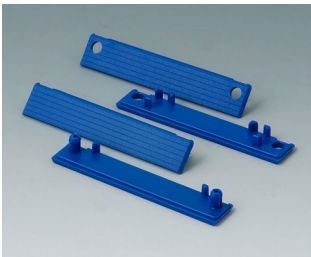
C2201084
Cover strips 3.150"
PC (UL 94 HB)
red RAL 3020



C2201085
Cover strips 3.150"
PC (UL 94 HB)
yellow RAL 1023



C2201086
Cover strips 3.150"
PC (UL 94 HB)
green RAL 6024



C2201087
Cover strips 3.150"
PC (UL 94 HB)
blue RAL 5017



C2203123
Cover strips 4.724"
PC (UL 94 HB)
silver gray RAL 7001



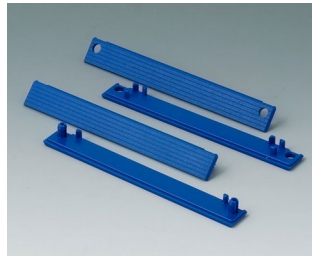
C2203124
Cover strips 4.724"
PC (UL 94 HB)
red RAL 3020



C2203125
Cover strips 4.724"
PC (UL 94 HB)
yellow RAL 1023



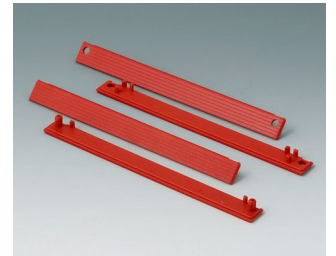
C2203126
Cover strips 4.724"
PC (UL 94 HB)
green RAL 6024



C2203127
Cover strips 4.724"
PC (UL 94 HB)
blue RAL 5017



C2204162
Cover strips 6.299"
PC (UL 94 HB)
silver gray RAL 7001



C2204164
Cover strips 6.299"
PC (UL 94 HB)
red RAL 3020



C2204165
Cover strips 6.299"
PC (UL 94 HB)
yellow RAL 1023



C2204166
Cover strips 6.299"
PC (UL 94 HB)
green RAL 6024



C2204167
Cover strips 6.299"
PC (UL 94 HB)
blue RAL 5017



C2299018
Case feet
TPE (UL 94 HB)

ROBUST-BOX



C2299058
PCB support
PC (UL 94 HB)
light gray RAL 7035



C2299068
PCB support
PC (UL 94 HB)
light gray RAL 7035

Subject to technical modification without notice. © by OKW Gehäusesysteme, Buchen/Germany.