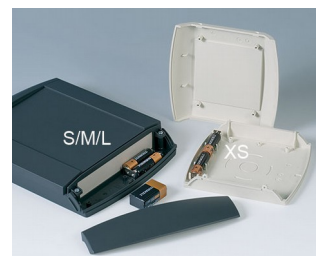
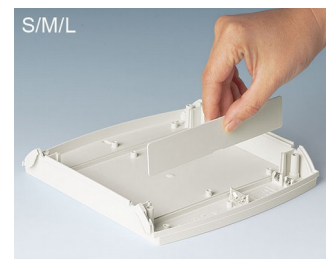


# DIATEC

## Attractive low profile plastic enclosures

These highly attractive enclosures are especially suitable for living and working environments – ideal for communication and network equipment.

- modern, flat enclosure design for wall mounted and desktop electronics
- central control panel for mounting a keypad, touch screen or display unit
- recessed area for installation and protection of interfaces, plug-in connections, cable glands etc.
- easy, invisible wall mounting; knockouts in base for wall fixings
- four sizes in two colors
- **DIATEC XS:** two-piece case, consisting of a top and bottom part, screwed together with Torx T10 stainless steel screws, integrated battery holder for 2 x AA, pre-shaped flush-mounting box contoured in the bottom part
- **DIATEC S, M, L:** four-piece case, consisting of a top and bottom part as well as two covers for concealing the assembly screws; if required, the snap-on covers can be locked to prevent unauthorized access; integrated battery compartment for 2 x AA or 1 x 9 V
- slot-in panels (accessories) can be used to separate the electronics and terminal areas
- protection class IP 40
- snap-on side panels allow installation without disassembly of the top panel (S, M, L)
- hinged lids in solid ABS, and translucent or transparent polycarbonate (accessories S, M, L)
- internal screw pillars for mounting PCBs



# DIATEC

## Applications and Examples

- Peripheral equipment for computers
- IoT/IloT
- Gateways
- Data system engineering
- Systems for data collection on the job
- Access and security controls
- Measuring and controlling devices
- Medical, wellness and laboratory technology



Control panel for home automation



Control unit for photovoltaic solar installations



Controller for intelligent tank management



House control unit



Indoor air quality control



Multi-functional terminal



Solar Control Panel



Systems for drying brickwork



WBA receiver unit for measuring biosignals



Weather Monitoring Station

## View Customizing Options

What do you still need for your own very personal product? We can supply enclosures and tuning knobs with all necessary modifications for fitting your electronic components. Customizing options for Diatec

# DIATEC



Machining



Lacquering



Printing



Laser marking



Decor foils



Special material



RFI/EMI shielding



Installation / Assembly  
of accessories

## Select Versions



**A9092107**  
DIATEC XS  
ABS (UL 94 HB)  
off-white RAL 9002  
5.91"x1.46"x6.10"  
IP 40



**A9092108**  
DIATEC XS  
ABS (UL 94 HB)  
lava  
5.91"x1.46"x6.10"  
IP 40



**A9093107**  
DIATEC S  
ABS (UL 94 HB)  
off-white RAL 9002  
8.27"x1.89"x7.87"  
IP 40



**A9093108**  
DIATEC S  
ABS (UL 94 HB)  
lava  
8.27"x1.89"x7.87"  
IP 40



**A9094107**  
DIATEC M  
ABS (UL 94 HB)  
off-white RAL 9002  
10.63"x1.89"x7.87"  
IP 40



**A9094108**  
DIATEC M  
ABS (UL 94 HB)  
lava  
10.63"x1.89"x7.87"  
IP 40



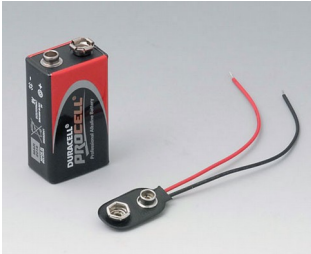
**A9095107**  
DIATEC L  
ABS (UL 94 HB)  
off-white RAL 9002  
12.99"x1.89"x7.87"  
IP 40



**A9095108**  
DIATEC L  
ABS (UL 94 HB)  
lava  
12.99"x1.89"x7.87"  
IP 40

# DIATEC

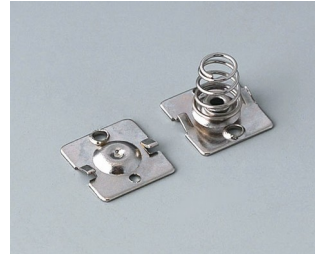
## Accessory "battery"



**A9160003**  
Plug-in contact, 1 x 9 V



**A9190002**  
Set of battery clips,  
2xN/2xAA/2xAAA  
Steel  
tin-plated

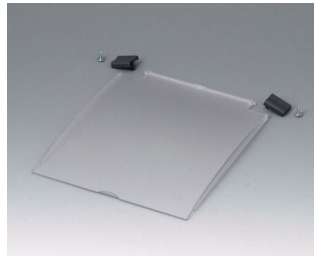


**A9190015**  
Set of battery clips, 2 x AA  
Steel  
nickel-plated

## Accessory "protection"



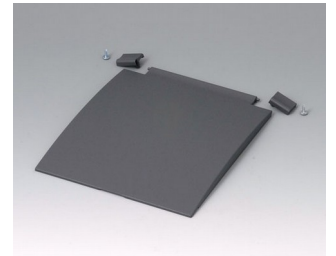
**A9193121**  
Hinged lid S, L  
PC (UL 94 V-0)  
translucent



**A9193122**  
Hinged lid S, L  
PC (UL 94 V-0)  
translucent



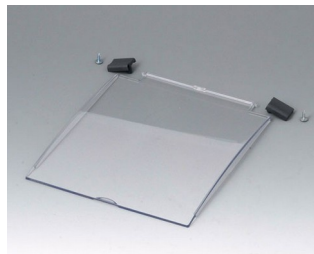
**A9193127**  
Hinged lid S, L  
ABS (UL 94 HB)  
off-white RAL 9002



**A9193128**  
Hinged lid S, L  
ABS (UL 94 HB)  
lava



**A9193131**  
Hinged lid S, L  
PC (UL 94 V-0)  
clear



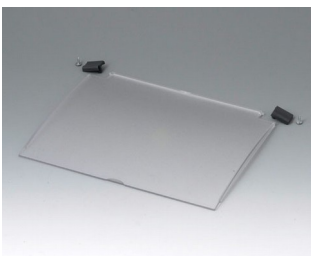
**A9193132**  
Hinged lid S, L  
PC (UL 94 V-0)  
clear



**A9194007**  
Slot-in panel  
ABS (UL 94 HB)  
off-white RAL 9002  
6.14"x1.18"x0.12"



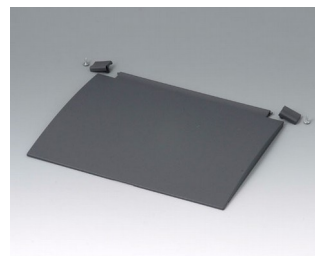
**A9194121**  
Hinged lid M  
PC (UL 94 V-0)  
translucent



**A9194122**  
Hinged lid M  
PC (UL 94 V-0)  
translucent



**A9194127**  
Hinged lid M  
ABS (UL 94 HB)  
off-white RAL 9002



**A9194128**  
Hinged lid M  
ABS (UL 94 HB)  
lava



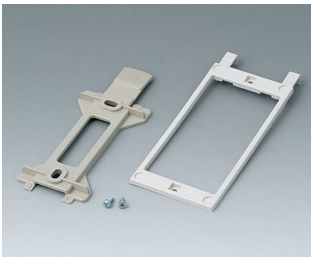
**A9194131**  
Hinged lid M  
PC (UL 94 V-0)  
clear

# DIATEC



**A9194132**  
Hinged lid M  
PC (UL 94 V-0)  
clear

## Accessory "wall/holder"



**B1360048**  
Wall suspension elements  
ABS (UL 94 HB)  
pebble gray RAL 7032

## Accessory "screws"



**A0306031**  
Self-tapping screws 0.118" x  
0.236" (PZ1)



**A0399T10**  
Torx T10 screwdriver

## Accessory



**A9207150**  
Anti-slide feet 0.256" x 0.079"  
transparent



**A9212330**  
Anti-slide feet 0.472" x 0.138"  
transparent

Subject to technical modification without notice. © by OKW Gehäusesysteme, Buchen/Germany.