

# DATEC-TERMINAL

## Modular plastic enclosures for data collection equipment

DATEC-TERMINAL is a tough and attractive housing system uniquely designed to meet the requirements of desktop and wall mounted data collection equipment.

- ergonomic terminal enclosures
- operating area inclined by 20°
- for desktop or wall mounted systems
- rear lids for mounting of standard pocket-size scanners
- four sizes and two types
- sizes M & L with separate terminal section which is easily accessible
- fast assembly and easy access for components
- hidden screw fixing
- wide range of accessories, functional and flexible to use
- protection class IP 54 in combination with cover and closed lid
- hidden wall mounting with removal prevention
- internal fastening pillars for PCBs 100 x 160 mm or double eurocard sizes (S, SL and L)
- plain surfaces for individual machining and interfaces
- recessed operating area for protecting a membrane keypad



# DATEC-TERMINAL

## Applications and Examples

- Systems for data collection on the job and machines
- Access and security controls
- Measuring and controlling
- Heating and air-conditioning units
- Medical, wellness
- Point-of-sale devices



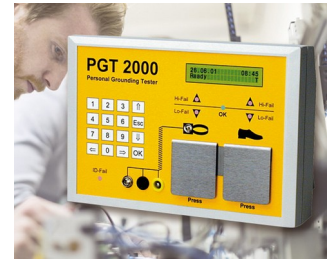
Dental Whitening and laser therapy



Device for monitoring and controlling distillation units



RFID access control readers



System for preventing electrostatic charges



Terminal for time recording, access control and order management



Versatile terminal for leisure facilities

## View Customizing Options

What do you still need for your own very personal product? We can supply enclosures and tuning knobs with all necessary modifications for fitting your electronic components.

Customizing options for Datec-Terminal



Machining



Lacquering



Printing



Laser marking



Decor foils



Special material



RFI/EMI shielding



Installation / Assembly of accessories

# DATEC-TERMINAL

## Select Versions



**B4013117**  
DATEC-TERMINAL S  
ABS (UL 94 HB)  
off-white RAL 9002  
5.12"x7.09"x3.39"  
IP 54 opt.



**B4016117**  
DATEC-TERMINAL M, Vers. I  
ABS (UL 94 HB)  
off-white RAL 9002  
6.61"x10.71"x3.98"  
IP 54 opt.



**B4016217**  
DATEC-TERMINAL M, Vers. II  
ABS (UL 94 HB)  
off-white RAL 9002  
6.61"x10.71"x3.98"  
IP 54 opt.



**B4016317**  
DATEC-TERMINAL M, Vers. III  
ABS (UL 94 HB)  
off-white RAL 9002  
6.61"x10.71"x3.98"  
IP 54 opt.



**B4026117**  
DATEC-TERMINAL SL  
ABS (UL 94 HB)  
off-white RAL 9002  
10.39"x7.09"x3.39"  
IP 54 opt.



**B4030117**  
DATEC-TERMINAL L, Vers. I  
ABS (UL 94 HB)  
off-white RAL 9002  
11.89"x10.71"x3.98"  
IP 54 opt.

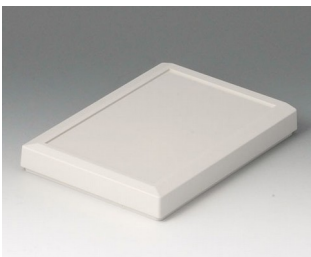


**B4030217**  
DATEC-TERMINAL L, Vers. II  
ABS (UL 94 HB)  
off-white RAL 9002  
11.89"x10.71"x3.98"  
IP 54 opt.

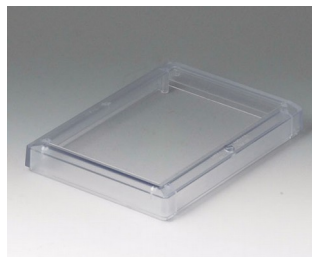


**B4030317**  
DATEC-TERMINAL L, Vers. III  
ABS (UL 94 HB)  
off-white RAL 9002  
11.89"x10.71"x3.98"  
IP 54 opt.

## Accessory to complete



**B4013617**  
Cover S  
ABS (UL 94 HB)  
off-white RAL 9002  
5.12"x7.09"x0.91"



**B4013621**  
Cover S  
PC (UL 94 V-0)  
transparent  
5.12"x7.09"x0.91"

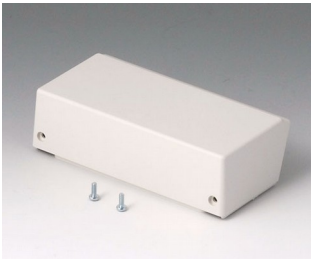


**B4013637**  
Cover S, convex  
ABS (UL 94 HB)  
off-white RAL 9002  
5.12"x7.09"x1.10"



**B4016417**  
Lid M closed, flat  
ABS (UL 94 HB)  
off-white RAL 9002  
5.28"x2.44"x0.94"

# DATEC-TERMINAL



**B4016457**  
Lid M closed, high  
ABS (UL 94 HB)  
off-white RAL 9002  
5.28"x2.64"x1.50"



**B4016617**  
Cover M, flat  
ABS (UL 94 HB)  
off-white RAL 9002  
6.61"x8.66"x1.14"



**B4016621**  
Cover M, flat  
PC (UL 94 V-0)  
transparent  
6.61"x8.66"x1.14"



**B4016631**  
Cover M, convex  
PC (UL 94 V-0)  
transparent  
6.61"x8.66"x1.14"



**B4016637**  
Cover M, convex  
ABS (UL 94 HB)  
off-white RAL 9002  
6.61"x8.66"x1.14"



**B4016657**  
Cover M, high  
ABS (UL 94 HB)  
off-white RAL 9002  
6.61"x8.66"x1.97"



**B4016671**  
Cover strip M / L  
PC (UL 94 V-0)  
transparent



**B4016677**  
Cover strip M / L  
ABS (UL 94 HB)  
off-white RAL 9002



**B4016917**  
Lid M with card slot, one piece  
ABS (UL 94 HB)  
off-white RAL 9002  
5.28"x2.64"x1.50"



**B4026617**  
Cover SL  
ABS (UL 94 HB)  
off-white RAL 9002  
10.39"x7.09"x0.91"



**B4026621**  
Cover SL  
PC (UL 94 V-0)  
transparent  
10.39"x7.09"x0.91"



**B4026637**  
Cover SL, convex  
ABS (UL 94 HB)  
off-white RAL 9002  
10.35"x7.09"x1.10"



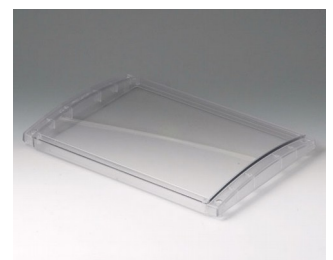
**B4030417**  
Lid L closed, flat  
ABS (UL 94 HB)  
off-white RAL 9002  
10.55"x2.44"x0.94"



**B4030617**  
Cover L, flat  
ABS (UL 94 HB)  
off-white RAL 9002  
11.89"x8.66"x1.14"



**B4030621**  
Cover L, flat  
PC (UL 94 V-0)  
transparent  
11.89"x8.66"x1.14"



**B4030631**  
Cover L, convex  
PC (UL 94 V-0)  
transparent  
11.89"x8.66"x1.14"

# DATEC-TERMINAL



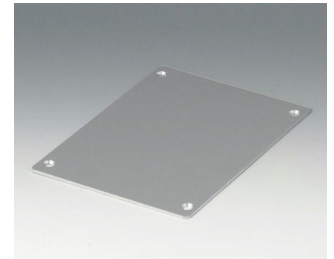
**B4030637**  
Cover L, convex  
ABS (UL 94 HB)  
off-white RAL 9002  
11.89"x8.66"x1.14"



**B4030657**  
Cover L, high  
ABS (UL 94 HB)  
off-white RAL 9002  
11.89"x8.66"x1.97"



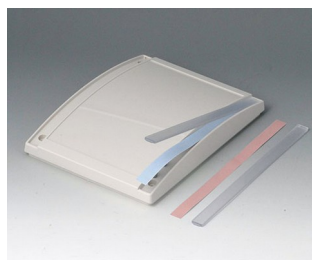
**B4030917**  
Lid L with card slot, one piece  
ABS (UL 94 HB)  
off-white RAL 9002  
10.55"x2.64"x1.50"



**B4113106**  
Front panel S  
Aluminum  
matt anodized  
4.96"x6.93"x0.08"



**B4113126**  
Profile plate S  
Aluminum  
matt anodized  
5.12"x7.09"x0.31"



**B4113671**  
Cover strip S / SL  
PC (UL 94 V-0)  
transparent



**B4113677**  
Cover strip S / SL  
ABS (UL 94 HB)  
off-white RAL 9002



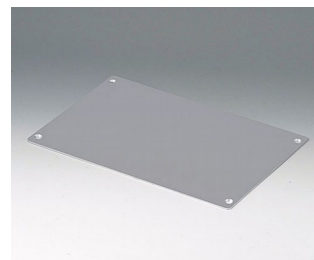
**B4116106**  
Front panel MS  
Aluminum  
matt anodized  
6.51"x8.56"x0.08"



**B4116116**  
Front panel MH  
Aluminum  
matt anodized  
5.04"x8.23"x0.08"



**B4116126**  
Profile plate M  
Aluminum  
matt anodized  
6.61"x8.66"x0.31"



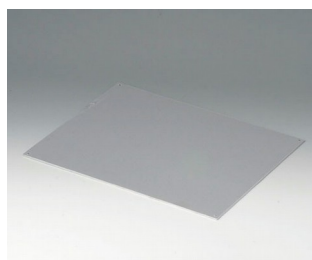
**B4126106**  
Front panel SL  
Aluminum  
matt anodized  
10.21"x6.93"x0.08"



**B4126126**  
Profile plate SL  
Aluminum  
matt anodized  
10.35"x7.09"x0.31"



**B4130106**  
Front panel LS  
Aluminum  
matt anodized  
11.79"x8.56"x0.08"



**B4130116**  
Front panel LH  
Aluminum  
matt anodized  
10.31"x8.23"x0.08"



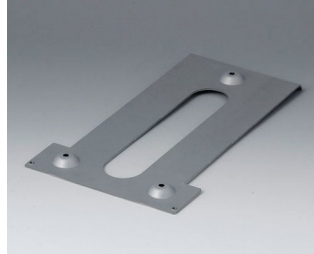
**B4130126**  
Profile plate L  
Aluminum  
matt anodized  
11.89"x8.66"x0.31"

# DATEC-TERMINAL

## Accessory "wall/holder"



**B4113147**  
Wall suspension element S  
Steel  
galvanized  
3.11"x5.39"x0.31"



**B4116147**  
Wall suspension element M  
Steel  
galvanized  
8.43"x4.96"x0.47"

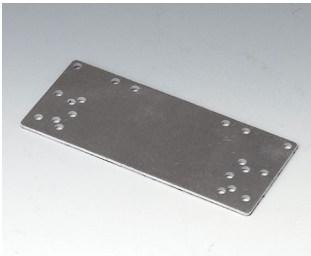


**B4126147**  
Wall suspension element SL  
Steel  
galvanized  
8.27"x5.39"x0.31"



**B4130147**  
Wall suspension element L  
Steel  
galvanized  
8.43"x10.24"x0.47"

## Accessory



**B4116136**  
Support plate L and M  
Aluminum  
matt anodized  
4.02"x1.77"x0.04"

Subject to technical modification without notice. © by OKW Gehäusesysteme, Buchen/Germany.