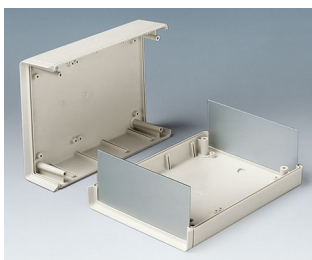
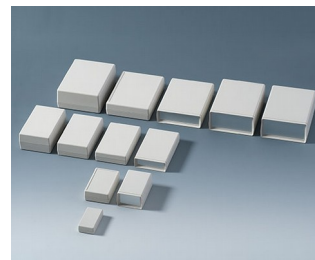


SHELL-TYPE CASES

Universal instrument enclosures

Our comprehensive SHELL-TYPE CASE range of plastic enclosures is available in different sizes, heights and types. Simply choose the case that meets your individual requirements!

- fifty one models in three different types:
 - type V** – with open front for a panel (acc.)
 - type O** – with open front and rear for panels (acc.)
 - type G** – with closed front and rear
- robust construction with tongue and groove
- internal guide ridges for vertical mounting of partitions and PCBs
- internal screw pillars for PCBs etc.
- front and rear panels in aluminum or PMMA red (plexiglas®) available as accessories
- versions with battery compartment for 2 x AA, 4 x AA, 1 x 9 V or 2 x 9 V cells (types V and G)
- closed version (type G) also available with recessed top
- protection class IP 65 for closed versions (type G) without battery compartment when using the sealing kit (accessory)
- EMC: on request the SHELL-TYPE CASES are also available with aluminum metalisation; aluminum contact strips (accessories) provide additional electrical continuity between the top and base shells of the shielded cases
- wall mounting brackets and wall suspension elements as accessories
- additional functions with universal accessories



SHELL-TYPE CASES

Applications and Examples

- Measuring and control technology
- Medical, wellness and laboratory technology
- Peripheral devices and interfaces, switchboxes etc.



Magnetic metal detector



System for leak detection in leisure vehicles



Teleservice Gateway MGW/865

View Customizing Options

What do you still need for your own very personal product? We can supply enclosures and tuning knobs with all necessary modifications for fitting your electronic components.

Customizing options for Shell-Type Cases



Machining



Lacquering



Printing



Laser marking



Decor foils



Special material



RFI/EMI shielding



Installation / Assembly of accessories

SHELL-TYPE CASES

Select Versions



A9404331
 SHELL-TYPE CASES G 85,
 Vers. I
 ABS (UL 94 HB)
 off-white RAL 9002
 1.77"x3.35"x0.87"
 IP 65 opt.



A9404333
 SHELL-TYPE CASES V 85,
 Vers. I
 ABS (UL 94 HB)
 off-white RAL 9002
 1.77"x3.35"x0.87"



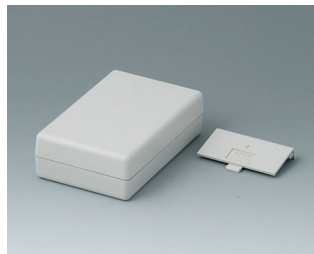
A9404341
 SHELL-TYPE CASES G 85,
 Vers. I
 ABS (UL 94 HB)
 off-white RAL 9002
 1.77"x3.35"x1.30"
 IP 65 opt.



A9404441
 SHELL-TYPE CASES G 85,
 Vers. I
 ABS (UL 94 HB)
 off-white RAL 9002
 1.77"x3.35"x1.77"
 IP 65 opt.



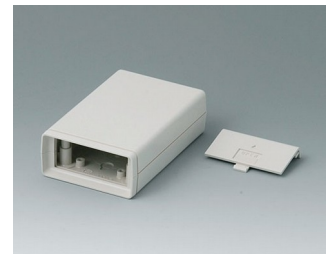
A9406331
 SHELL-TYPE CASES G 110,
 Vers. I
 ABS (UL 94 HB)
 off-white RAL 9002
 2.83"x4.49"x1.30"
 IP 65 opt.



A9406332
 SHELL-TYPE CASES G 110,
 Vers. II
 ABS (UL 94 HB)
 off-white RAL 9002
 2.83"x4.49"x1.30"



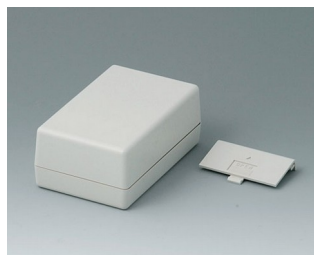
A9406333
 SHELL-TYPE CASES V 110,
 Vers. I
 ABS (UL 94 HB)
 off-white RAL 9002
 2.83"x4.49"x1.30"



A9406334
 SHELL-TYPE CASES V 110,
 Vers. II
 ABS (UL 94 HB)
 off-white RAL 9002
 2.83"x4.49"x1.30"



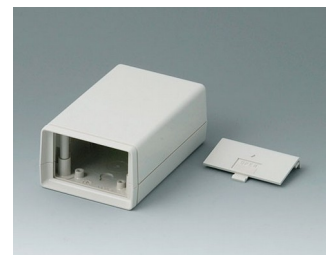
A9406341
 SHELL-TYPE CASES G 110,
 Vers. I
 ABS (UL 94 HB)
 off-white RAL 9002
 2.83"x4.49"x1.77"
 IP 65 opt.



A9406342
 SHELL-TYPE CASES G 110,
 Vers. II
 ABS (UL 94 HB)
 off-white RAL 9002
 2.83"x4.49"x1.77"



A9406343
 SHELL-TYPE CASES V 110,
 Vers. I
 ABS (UL 94 HB)
 off-white RAL 9002
 2.83"x4.49"x1.77"

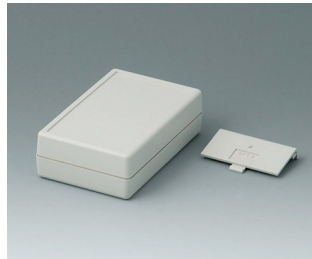


A9406344
 SHELL-TYPE CASES V 110,
 Vers. II
 ABS (UL 94 HB)
 off-white RAL 9002
 2.83"x4.49"x1.77"

SHELL-TYPE CASES



A9406351
SHELL-TYPE CASES G 110,
Vers. I
ABS (UL 94 HB)
off-white RAL 9002
2.83"x4.49"x1.32"
IP 65 opt.



A9406352
SHELL-TYPE CASES G 110,
Vers. II
ABS (UL 94 HB)
off-white RAL 9002
2.83"x4.49"x1.32"



A9406441
SHELL-TYPE CASES G 110,
Vers. I
ABS (UL 94 HB)
off-white RAL 9002
2.83"x4.49"x2.24"
IP 65 opt.



A9406443
SHELL-TYPE CASES V 110,
Vers. I
ABS (UL 94 HB)
off-white RAL 9002
2.83"x4.49"x2.24"



A9408330
SHELL-TYPE CASES O 155,
Vers. I
ABS (UL 94 HB)
off-white RAL 9002
3.74"x6.22"x1.30"



A9408331
SHELL-TYPE CASES G 155,
Vers. I
ABS (UL 94 HB)
off-white RAL 9002
3.74"x6.22"x1.30"
IP 65 opt.



A9408333
SHELL-TYPE CASES V 155,
Vers. I
ABS (UL 94 HB)
off-white RAL 9002
3.74"x6.22"x1.30"



A9408335
SHELL-TYPE CASES G 155,
Vers. IV
ABS (UL 94 HB)
off-white RAL 9002
3.74"x6.22"x1.30"



A9408336
SHELL-TYPE CASES V 155,
Vers. IV
ABS (UL 94 HB)
off-white RAL 9002
3.74"x6.22"x1.30"



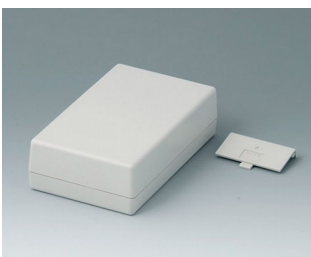
A9408340
SHELL-TYPE CASES O 155,
Vers. I
ABS (UL 94 HB)
off-white RAL 9002
3.74"x6.22"x1.77"



A9408341
SHELL-TYPE CASES G 155,
Vers. I
ABS (UL 94 HB)
off-white RAL 9002
3.74"x6.22"x1.77"
IP 65 opt.



A9408343
SHELL-TYPE CASES V 155,
Vers. I
ABS (UL 94 HB)
off-white RAL 9002
3.74"x6.22"x1.77"



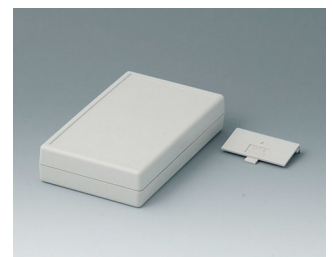
A9408345
SHELL-TYPE CASES G 155,
Vers. IV
ABS (UL 94 HB)
off-white RAL 9002
3.74"x6.22"x1.77"



A9408346
SHELL-TYPE CASES V 155,
Vers. IV
ABS (UL 94 HB)
off-white RAL 9002
3.74"x6.22"x1.77"



A9408351
SHELL-TYPE CASES G 155,
Vers. I
ABS (UL 94 HB)
off-white RAL 9002
3.74"x6.22"x1.32"
IP 65 opt.



A9408355
SHELL-TYPE CASES G 155,
Vers. IV
ABS (UL 94 HB)
off-white RAL 9002
3.74"x6.22"x1.32"

SHELL-TYPE CASES



A9408440
SHELL-TYPE CASES O 155,
Vers. I
ABS (UL 94 HB)
off-white RAL 9002
3.74"x6.10"x2.24"



A9408441
SHELL-TYPE CASES G 155,
Vers. I
ABS (UL 94 HB)
off-white RAL 9002
3.74"x6.22"x2.24"
IP 65 opt.



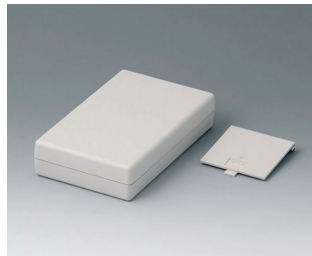
A9408443
SHELL-TYPE CASES V 155,
Vers. I
ABS (UL 94 HB)
off-white RAL 9002
3.74"x6.22"x2.24"



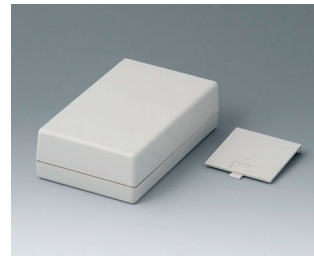
A9408638
SHELL-TYPE CASES V 155,
Vers. V
ABS (UL 94 HB)
off-white RAL 9002
3.74"x6.22"x1.30"



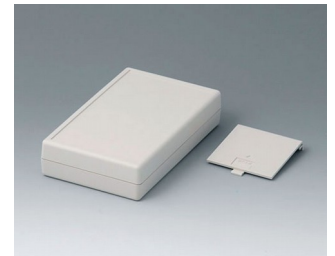
A9408648
SHELL-TYPE CASES V 155,
Vers. V
ABS (UL 94 HB)
off-white RAL 9002
3.74"x6.22"x1.77"



A9408737
SHELL-TYPE CASES G 155,
Vers. V
ABS (UL 94 HB)
off-white RAL 9002
3.74"x6.22"x1.30"



A9408747
SHELL-TYPE CASES G 155,
Vers. V
ABS (UL 94 HB)
off-white RAL 9002
3.74"x6.22"x1.77"



A9408757
SHELL-TYPE CASES G 155,
Vers. V
ABS (UL 94 HB)
off-white RAL 9002
3.74"x6.22"x1.32"



A9413330
SHELL-TYPE CASES O 190,
Vers. I
ABS (UL 94 HB)
off-white RAL 9002
5.43"x7.48"x1.77"



A9413331
SHELL-TYPE CASES G 190,
Vers. I
ABS (UL 94 HB)
off-white RAL 9002
5.43"x7.48"x1.77"
IP 65 opt.



A9413333
SHELL-TYPE CASES V 190,
Vers. I
ABS (UL 94 HB)
off-white RAL 9002
5.43"x7.48"x1.77"



A9413340
SHELL-TYPE CASES O 190,
Vers. I
ABS (UL 94 HB)
off-white RAL 9002
5.43"x7.48"x2.68"



A9413341
SHELL-TYPE CASES G 190,
Vers. I
ABS (UL 94 HB)
off-white RAL 9002
5.43"x7.48"x2.68"
IP 65 opt.



A9413343
SHELL-TYPE CASES V 190,
Vers. I
ABS (UL 94 HB)
off-white RAL 9002
5.43"x7.48"x2.68"



A9413351
SHELL-TYPE CASES G 190,
Vers. I
ABS (UL 94 HB)
off-white RAL 9002
5.43"x7.48"x1.79"
IP 65 opt.



A9413440
SHELL-TYPE CASES O 190,
Vers. I
ABS (UL 94 HB)
off-white RAL 9002
5.43"x7.48"x3.58"

SHELL-TYPE CASES



A9413441
SHELL-TYPE CASES G 190,
Vers. I
ABS (UL 94 HB)
off-white RAL 9002
5.43"x7.48"x3.58"
IP 65 opt.



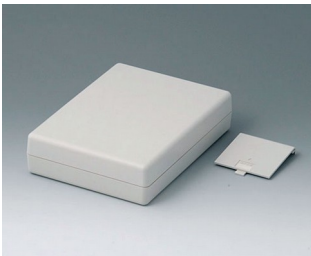
A9413443
SHELL-TYPE CASES V 190,
Vers. I
ABS (UL 94 HB)
off-white RAL 9002
5.43"x7.48"x3.58"



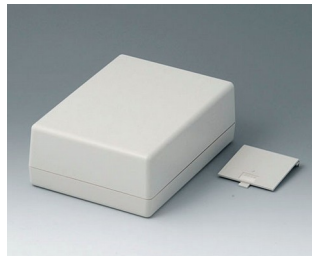
A9413638
SHELL-TYPE CASES V 190,
Vers. V
ABS (UL 94 HB)
off-white RAL 9002
5.43"x7.48"x1.77"



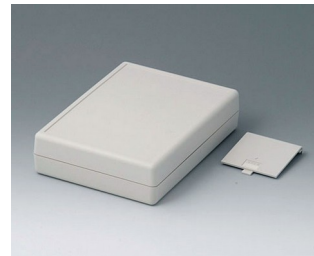
A9413648
SHELL-TYPE CASES V 190,
Vers. V
ABS (UL 94 HB)
off-white RAL 9002
5.43"x7.48"x2.68"



A9413737
SHELL-TYPE CASES G 190,
Vers. V
ABS (UL 94 HB)
off-white RAL 9002
5.43"x7.48"x1.77"



A9413747
SHELL-TYPE CASES G 190,
Vers. V
ABS (UL 94 HB)
off-white RAL 9002
5.43"x7.48"x2.68"

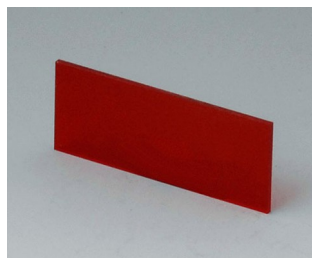


A9413757
SHELL-TYPE CASES G 190,
Vers. V
ABS (UL 94 HB)
off-white RAL 9002
5.43"x7.48"x1.79"

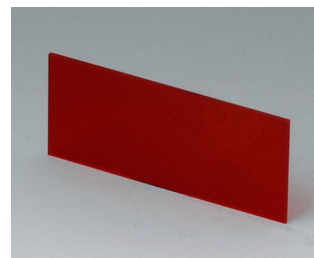
Accessory to complete



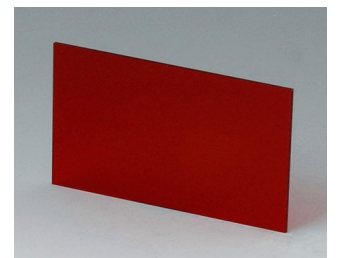
A9104111
Front / rear panel V 85
Aluminum
matt anodized
1.42"x0.57"x0.04"



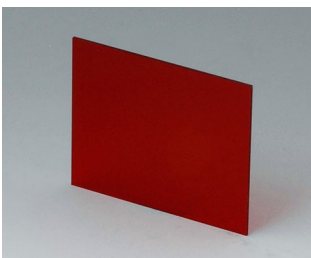
A9104113
Front / rear panel V 85
Acrylic glass
red transparent
1.42"x0.57"x0.04"



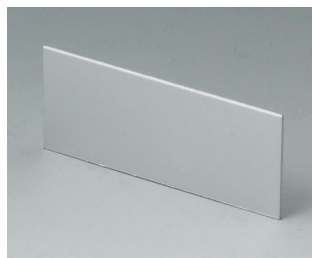
A9106113
Front / rear panel V 110
Acrylic glass
red transparent
2.33"x0.98"x0.04"



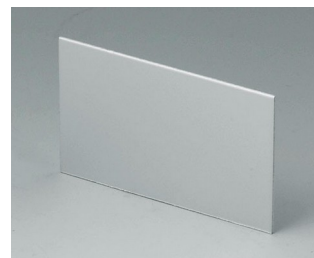
A9106123
Front / rear panel V 110
Acrylic glass
red transparent
2.33"x1.46"x0.04"



A9106223
Front / rear panel V 110
Acrylic glass
red transparent
2.33"x1.93"x0.04"



A9107111
Front / rear panel V 110
Aluminum
matt anodized
2.33"x0.98"x0.04"

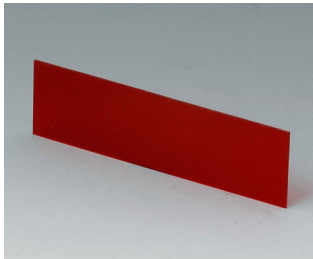


A9107121
Front / rear panel V 110
Aluminum
matt anodized
2.33"x1.46"x0.04"

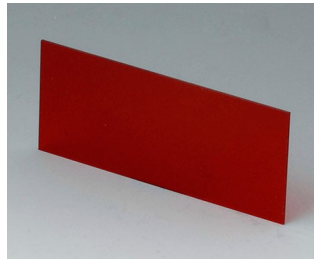


A9107221
Front / rear panel V 110
Aluminum
matt anodized
2.33"x1.93"x0.04"

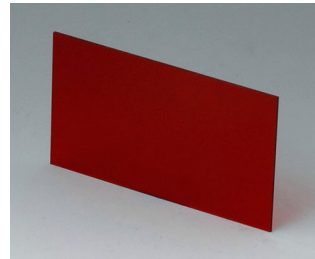
SHELL-TYPE CASES



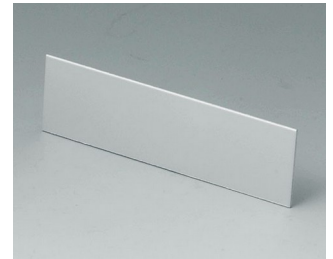
A9108113
Front / rear panel V, O 155
Acrylic glass
red transparent
3.22"x0.93"x0.04"



A9108123
Front / rear panel V, O 155
Acrylic glass
red transparent
3.22"x1.40"x0.04"



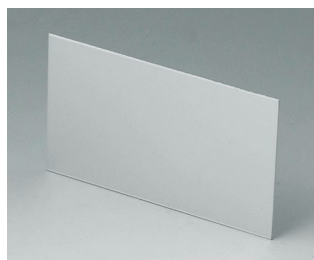
A9108223
Front / rear panel V, O 155
Acrylic glass
red transparent
3.22"x1.87"x0.04"



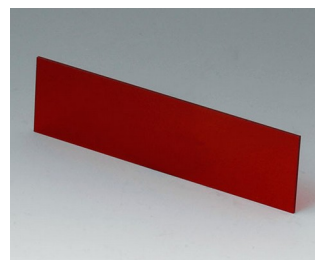
A9109111
Front / rear panel V, O 155
Aluminum
matt anodized
3.22"x0.93"x0.04"



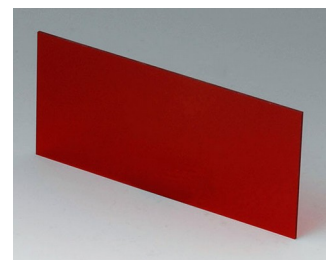
A9109121
Front / rear panel V, O 155
Aluminum
matt anodized
3.22"x1.40"x0.04"



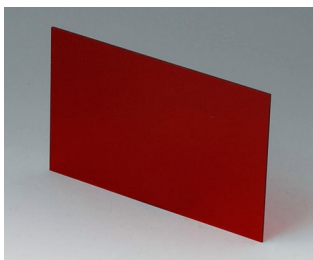
A9109221
Front / rear panel V, O 155
Aluminum
matt anodized
3.22"x1.87"x0.04"



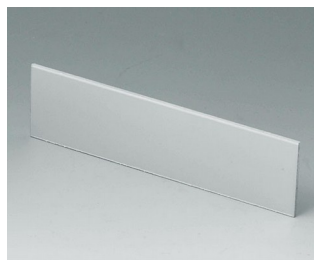
A9113113
Front / rear panel V, O 190
Acrylic glass
red transparent
4.89"x1.32"x0.06"



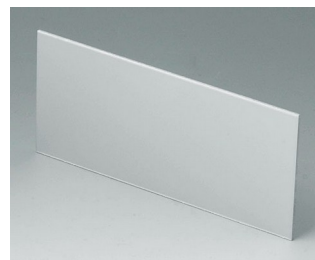
A9113123
Front / rear panel V, O 190
Acrylic glass
red transparent
4.89"x2.23"x0.06"



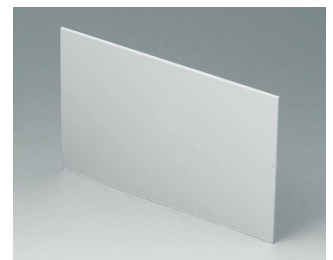
A9113223
Front / rear panel V, O 190
Acrylic glass
red transparent
4.89"x3.13"x0.06"



A9114111
Front / rear panel V, O 190
Aluminum
matt anodized
4.89"x1.32"x0.06"

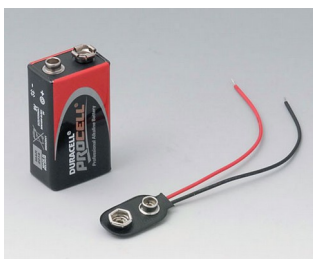


A9114121
Front / rear panel V, O 190
Aluminum
matt anodized
4.89"x2.23"x0.06"



A9114221
Front / rear panel V, O 190
Aluminum
matt anodized
4.89"x3.13"x0.06"

Accessory "battery"



A9160003
Plug-in contact, 1 x 9 V



A9190013
Set of battery clips, 4 x AA
Steel
nickel-plated



A9190014
Set of battery clips, 2 x AA
Steel
nickel-plated



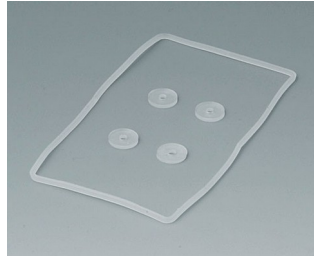
A9250250
Battery spacer
PE foam
1.97"x0.98"x0.16"

SHELL-TYPE CASES

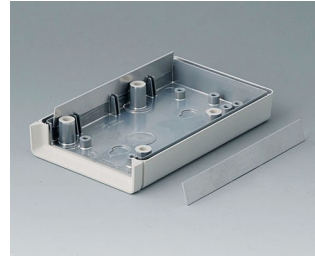
Accessory "protection"



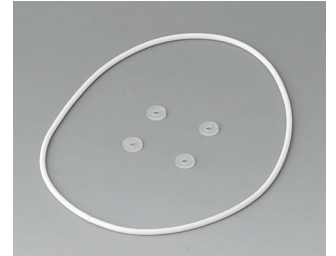
A9104073
 Contact-strips V, G 85
 Aluminum



A9104250
 Sealing kit G 85



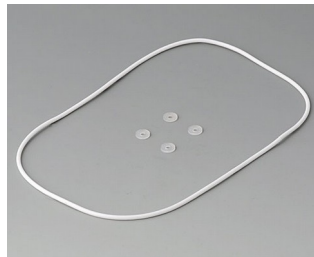
A9106095
 Contact-strips V, G 110
 Aluminum



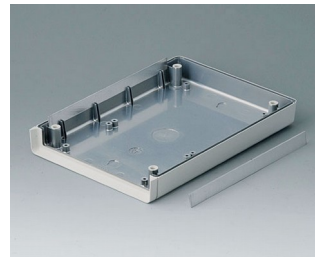
A9106352
 Sealing kit G 110



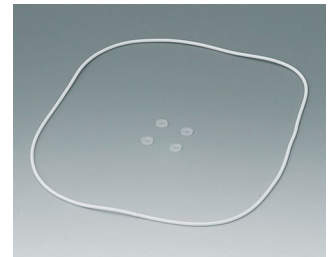
A9108120
 Contact-strips V, O, G 155
 Aluminum



A9108486
 Sealing kit G 155



A9113150
 Contact-strips V, O, G 190
 Aluminum



A9113630
 Sealing kit G 190

Accessory "wall/holder"



A9204108
 Wall mounting brackets
 PA 6
 pebble gray RAL 7032



B1350048
 Wall suspension elements
 ABS (UL 94 HB)
 pebble gray RAL 7032



B1360048
 Wall suspension elements
 ABS (UL 94 HB)
 pebble gray RAL 7032

Accessory "carrying"



A9100001
 Ring eyelet
 PA 6
 volcano



A9100002
 Ring eyelet
 PA 6
 volcano



A9172107
 Belt/Pocket clip
 ABS (UL 94 HB)
 off-white RAL 9002
 2.44"x1.18"

SHELL-TYPE CASES

Accessory "screws"



A0306031
Self-tapping screws 0.118" x
0.236" (PZ1)

Accessory



A9207150
Anti-slide feet 0.256" x 0.079"
transparent



A9210290
Anti-slide feet 0.374" x 0.150"
transparent



A9250807
Tilt foot bar
ABS (UL 94 HB)
off-white RAL 9002



A9250817
Tilt foot bar
ABS (UL 94 HB)
off-white RAL 9002

Subject to technical modification without notice. © by OKW Gehäusesysteme, Buchen/Germany.