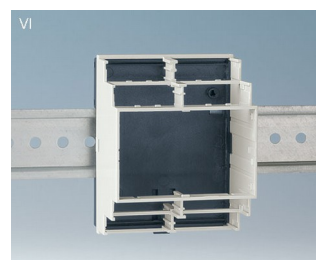
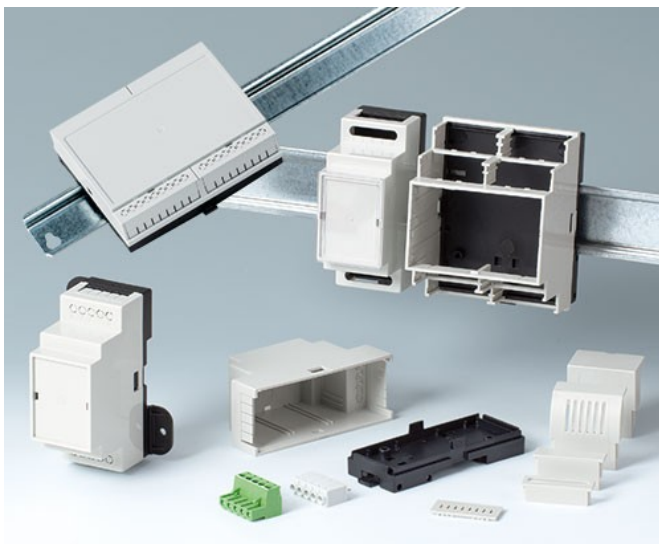


# RAILTEC B

## Versatile standard DIN rail enclosures

Our RAILTEC B series of plastic enclosures provides fast and simple mounting on to standard DIN EN 60715 TH35 rails.

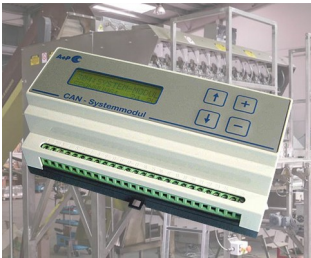
- six sizes (2 to 12 modules wide) according to DIN 43880, unit 1;
- four sizes (2, 4, 6 & 9 modules wide) with low profile - *NEW*: 2 versions;
- four sizes (2, 4, 6 & 9 modules wide) with flat/high connection level
- fully insulated and protected according to VBG 4 and IEC 529/DIN VDE 0470-1
- flame-resistant material (UL 94 V-0)
- **version I and XI**: for PCB terminal blocks 5.0/5.08 mm pitch
- **version II and XII**: for plug headers 5.0/5.08 mm pitch
- **version III and XIII**: closed case for front connectors, D-SUB connectors, etc.
- **version IV**: for PCB terminal blocks 5.0/5.08 mm pitch (1 row)
- **version V**: with knockout perforations 5.0 mm pitch
- **version VI**: open case for fitting different combinations of terminal guards and partition plate; optionally 1 or 2 connection levels
- KNX cover to fit 2 and 4 modules of series VI and flat top parts
- suitable for DIN rails EN 60715 TH35 or direct wall mounting
- with/without ventilation slots for good heat dissipation
- flexible assembly: PCB positioning in all 3 directions; base part with fixing pillars, top parts with guide ridges
- DIN rail clip pre-assembled in base part
- transparent lid (acc.) protects display and operation elements
- protection class < IP 40



# RAILTEC B

## Applications and Examples

- Universal use as installation case
- Corresponding to the regulations of the machine-building and motorcar industry
- Smart Factory / Industry 4.0
- Especially for the control equipment for example lighting systems



CAN BUS system module for packaging machines



Earthfault detection and short-circuit indicator



Industrial VDSL2/ADSL2 modems



Monitoring of electrical variables



Power measuring device for energy analysis



Remote meter for condition monitoring



Smart meter for electricity consumption



Water level detector

## View Customizing Options

What do you still need for your own very personal product? We can supply enclosures and tuning knobs with all necessary modifications for fitting your electronic components. Customizing options for Railtec B



Machining



Lacquering



Printing



Laser marking



Decor foils



Installation / Assembly of accessories

# RAILTEC B

## Select Versions



**B6501110**  
RAILTEC B, 2 modules, Vers. V  
PC (UL 94 V-0)  
light gray RAL 7035  
1.38"x3.39"x2.28"



**B6501111**  
RAILTEC B, 2 modules, Vers. I  
PC (UL 94 V-0)  
light gray RAL 7035  
1.38"x3.39"x2.28"



**B6501112**  
RAILTEC B, 2 modules, Vers. II  
PC (UL 94 V-0)  
light gray RAL 7035  
1.38"x3.39"x2.28"



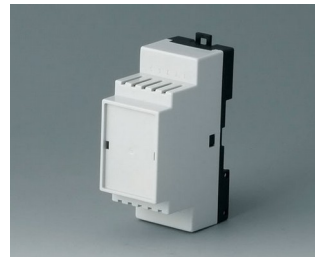
**B6501113**  
RAILTEC B, 2 modules, Vers. III  
PC (UL 94 V-0)  
light gray RAL 7035  
1.38"x3.39"x2.28"



**B6501114**  
RAILTEC B, 2 modules, Vers. I  
PC (UL 94 V-0)  
light gray RAL 7035  
1.38"x3.39"x2.28"



**B6501115**  
RAILTEC B, 2 modules, Vers. II  
PC (UL 94 V-0)  
light gray RAL 7035  
1.38"x3.39"x2.28"



**B6501116**  
RAILTEC B, 2 modules, Vers. III  
PC (UL 94 V-0)  
light gray RAL 7035  
1.38"x3.39"x2.28"



**B6501117**  
RAILTEC B, 2 modules, Vers. IV  
PC (UL 94 V-0)  
light gray RAL 7035  
1.38"x3.39"x2.28"



**B6501118**  
RAILTEC B, 2 modules, Vers. IV  
PC (UL 94 V-0)  
light gray RAL 7035  
1.38"x3.39"x2.28"



**B6501119**  
RAILTEC B, 2 modules, Vers. V  
PC (UL 94 V-0)  
light gray RAL 7035  
1.38"x3.39"x2.28"



**B6501121**  
RAILTEC B, 2 modules, Vers. VI  
PC (UL 94 V-0)  
light gray RAL 7035  
1.38"x3.54"x2.28"



**B6501223**  
RAILTEC B, 2 modules, Vers. III  
low profile  
PC (UL 94 V-0)  
light gray RAL 7035  
1.38"x3.39"x1.23"



**B6501229**  
RAILTEC B, 2 modules, Vers.  
low profile  
PC (UL 94 V-0)  
light gray RAL 7035  
1.38"x3.53"x1.23"



**B6502110**  
RAILTEC B, 3 modules, Vers. V  
PC (UL 94 V-0)  
light gray RAL 7035  
2.07"x3.39"x2.28"

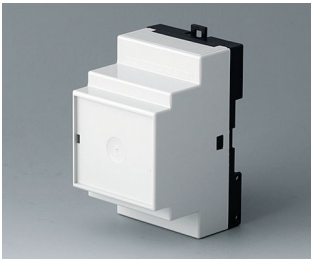


**B6502111**  
RAILTEC B, 3 modules, Vers. I  
PC (UL 94 V-0)  
light gray RAL 7035  
2.07"x3.39"x2.28"



**B6502112**  
RAILTEC B, 3 modules, Vers. II  
PC (UL 94 V-0)  
light gray RAL 7035  
2.07"x3.39"x2.28"

# RAILTEC B



**B6502113**  
RAILTEC B, 3 modules, Vers. III  
PC (UL 94 V-0)  
light gray RAL 7035  
2.07"x3.39"x2.28"



**B6502114**  
RAILTEC B, 3 modules, Vers. I  
PC (UL 94 V-0)  
light gray RAL 7035  
2.07"x3.39"x2.28"



**B6502115**  
RAILTEC B, 3 modules, Vers. II  
PC (UL 94 V-0)  
light gray RAL 7035  
2.07"x3.39"x2.28"



**B6502116**  
RAILTEC B, 3 modules, Vers. III  
PC (UL 94 V-0)  
light gray RAL 7035  
2.07"x3.39"x2.28"



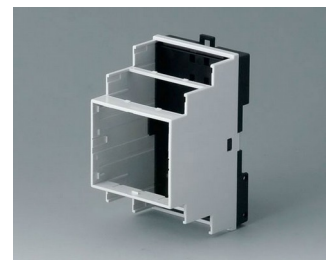
**B6502117**  
RAILTEC B, 3 modules, Vers. IV  
PC (UL 94 V-0)  
light gray RAL 7035  
2.07"x3.39"x2.28"



**B6502118**  
RAILTEC B, 3 modules, Vers. IV  
PC (UL 94 V-0)  
light gray RAL 7035  
2.07"x3.39"x2.28"



**B6502119**  
RAILTEC B, 3 modules, Vers. V  
PC (UL 94 V-0)  
light gray RAL 7035  
2.07"x3.39"x2.28"



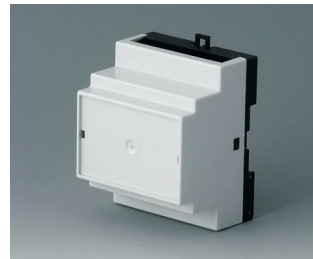
**B6502121**  
RAILTEC B, 3 modules, Vers. VI  
PC (UL 94 V-0)  
light gray RAL 7035  
2.07"x3.54"x2.28"



**B6503110**  
RAILTEC B, 4 modules, Vers. V  
PC (UL 94 V-0)  
light gray RAL 7035  
2.76"x3.39"x2.28"



**B6503111**  
RAILTEC B, 4 modules, Vers. I  
PC (UL 94 V-0)  
light gray RAL 7035  
2.76"x3.39"x2.28"



**B6503112**  
RAILTEC B, 4 modules, Vers. II  
PC (UL 94 V-0)  
light gray RAL 7035  
2.76"x3.39"x2.28"



**B6503113**  
RAILTEC B, 4 modules, Vers. III  
PC (UL 94 V-0)  
light gray RAL 7035  
2.76"x3.39"x2.28"



**B6503114**  
RAILTEC B, 4 modules, Vers. I  
PC (UL 94 V-0)  
light gray RAL 7035  
2.76"x3.39"x2.28"



**B6503115**  
RAILTEC B, 4 modules, Vers. II  
PC (UL 94 V-0)  
light gray RAL 7035  
2.76"x3.39"x2.28"



**B6503116**  
RAILTEC B, 4 modules, Vers. III  
PC (UL 94 V-0)  
light gray RAL 7035  
2.76"x3.39"x2.28"



**B6503117**  
RAILTEC B, 4 modules, Vers. IV  
PC (UL 94 V-0)  
light gray RAL 7035  
2.76"x3.39"x2.28"

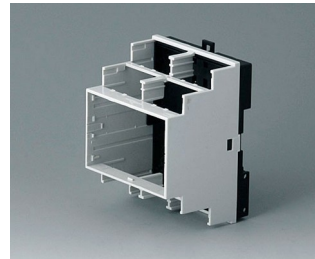
# RAILTEC B



**B6503118**  
RAILTEC B, 4 modules, Vers. IV  
PC (UL 94 V-0)  
light gray RAL 7035  
2.76"x3.39"x2.28"



**B6503119**  
RAILTEC B, 4 modules, Vers. V  
PC (UL 94 V-0)  
light gray RAL 7035  
2.76"x3.39"x2.28"



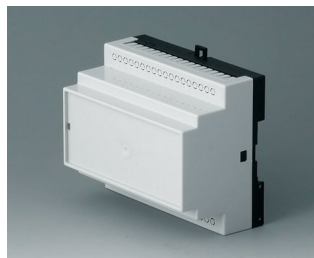
**B6503121**  
RAILTEC B, 4 modules, Vers. VI  
PC (UL 94 V-0)  
light gray RAL 7035  
2.76"x3.54"x2.28"



**B6503223**  
RAILTEC B, 4 modules, Vers. III  
low profile  
PC (UL 94 V-0)  
light gray RAL 7035  
2.76"x3.39"x1.23"



**B6503229**  
RAILTEC B, 4 modules, Vers.  
low profile  
PC (UL 94 V-0)  
light gray RAL 7035  
2.76"x3.53"x1.23"



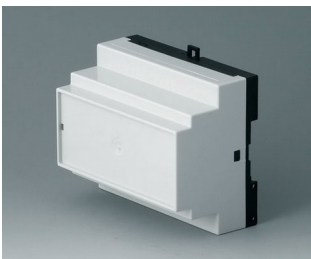
**B6504110**  
RAILTEC B, 6 modules, Vers. V  
PC (UL 94 V-0)  
light gray RAL 7035  
4.13"x3.39"x2.32"



**B6504111**  
RAILTEC B, 6 modules, Vers. I  
PC (UL 94 V-0)  
light gray RAL 7035  
4.13"x3.39"x2.32"



**B6504112**  
RAILTEC B, 6 modules, Vers. II  
PC (UL 94 V-0)  
light gray RAL 7035  
4.13"x3.39"x2.32"



**B6504113**  
RAILTEC B, 6 modules, Vers. III  
PC (UL 94 V-0)  
light gray RAL 7035  
4.13"x3.39"x2.32"



**B6504114**  
RAILTEC B, 6 modules, Vers. I  
PC (UL 94 V-0)  
light gray RAL 7035  
4.13"x3.39"x2.32"



**B6504115**  
RAILTEC B, 6 modules, Vers. II  
PC (UL 94 V-0)  
light gray RAL 7035  
4.13"x3.39"x2.32"



**B6504116**  
RAILTEC B, 6 modules, Vers. III  
PC (UL 94 V-0)  
light gray RAL 7035  
4.13"x3.39"x2.32"



**B6504117**  
RAILTEC B, 6 modules, Vers. IV  
PC (UL 94 V-0)  
light gray RAL 7035  
4.13"x3.39"x2.32"



**B6504118**  
RAILTEC B, 6 modules, Vers. IV  
PC (UL 94 V-0)  
light gray RAL 7035  
4.13"x3.39"x2.32"



**B6504119**  
RAILTEC B, 6 modules, Vers. V  
PC (UL 94 V-0)  
light gray RAL 7035  
4.13"x3.39"x2.32"



**B6504121**  
RAILTEC B, 6 modules, Vers. VI  
PC (UL 94 V-0)  
light gray RAL 7035  
4.13"x3.54"x2.28"

# RAILTEC B



**B6504223**  
RAILTEC B, 6 modules, Vers. III  
low profile  
PC (UL 94 V-0)  
light gray RAL 7035  
4.13"x3.39"x1.23"



**B6504229**  
RAILTEC B, 6 modules, Vers.  
low profile  
PC (UL 94 V-0)  
light gray RAL 7035  
4.13"x3.53"x1.23"



**B6505110**  
RAILTEC B, 9 modules, Vers. V  
PC (UL 94 V-0)  
light gray RAL 7035  
6.18"x3.39"x2.32"



**B6505111**  
RAILTEC B, 9 modules, Vers. I  
PC (UL 94 V-0)  
light gray RAL 7035  
6.18"x3.39"x2.32"



**B6505112**  
RAILTEC B, 9 modules, Vers. II  
PC (UL 94 V-0)  
light gray RAL 7035  
6.18"x3.39"x2.32"



**B6505113**  
RAILTEC B, 9 modules, Vers. III  
PC (UL 94 V-0)  
light gray RAL 7035  
6.18"x3.39"x2.32"



**B6505114**  
RAILTEC B, 9 modules, Vers. I  
PC (UL 94 V-0)  
light gray RAL 7035  
6.18"x3.39"x2.32"



**B6505115**  
RAILTEC B, 9 modules, Vers. II  
PC (UL 94 V-0)  
light gray RAL 7035  
6.18"x3.39"x2.32"



**B6505116**  
RAILTEC B, 9 modules, Vers. III  
PC (UL 94 V-0)  
light gray RAL 7035  
6.18"x3.39"x2.32"



**B6505117**  
RAILTEC B, 9 modules, Vers. IV  
PC (UL 94 V-0)  
light gray RAL 7035  
6.18"x3.39"x2.32"



**B6505118**  
RAILTEC B, 9 modules, Vers. IV  
PC (UL 94 V-0)  
light gray RAL 7035  
6.18"x3.39"x2.32"



**B6505119**  
RAILTEC B, 9 modules, Vers. V  
PC (UL 94 V-0)  
light gray RAL 7035  
6.18"x3.39"x2.32"



**B6505121**  
RAILTEC B, 9 modules, Vers. VI  
PC (UL 94 V-0)  
light gray RAL 7035  
6.18"x3.54"x2.28"



**B6505223**  
RAILTEC B, 9 modules, Vers. III  
low profile  
PC (UL 94 V-0)  
light gray RAL 7035  
6.18"x3.39"x1.23"



**B6505229**  
RAILTEC B, 9 modules, Vers.  
low profile  
PC (UL 94 V-0)  
light gray RAL 7035  
6.20"x3.53"x1.23"

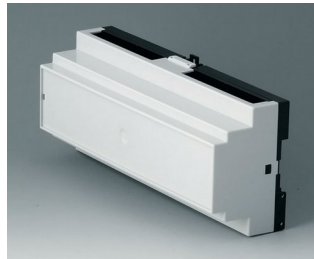


**B6506110**  
RAILTEC B, 12 modules, Vers. V  
PC (UL 94 V-0)  
light gray RAL 7035  
8.27"x3.54"x2.28"

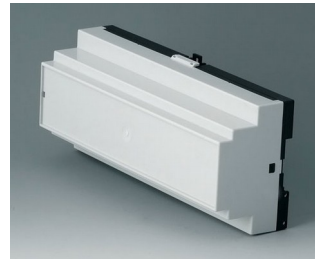
# RAILTEC B



**B6506111**  
RAILTEC B, 12 modules, Vers. I  
PC (UL 94 V-0)  
light gray RAL 7035  
8.27"x3.54"x2.28"



**B6506112**  
RAILTEC B, 12 modules, Vers. II  
PC (UL 94 V-0)  
light gray RAL 7035  
8.27"x3.54"x2.28"



**B6506113**  
RAILTEC B, 12 modules, Vers. III  
PC (UL 94 V-0)  
light gray RAL 7035  
8.27"x3.54"x2.28"



**B6506114**  
RAILTEC B, 12 modules, Vers. I  
PC (UL 94 V-0)  
light gray RAL 7035  
8.27"x3.54"x2.28"



**B6506115**  
RAILTEC B, 12 modules, Vers. II  
PC (UL 94 V-0)  
light gray RAL 7035  
8.27"x3.54"x2.28"



**B6506116**  
RAILTEC B, 12 modules, Vers. III  
PC (UL 94 V-0)  
light gray RAL 7035  
8.27"x3.54"x2.28"



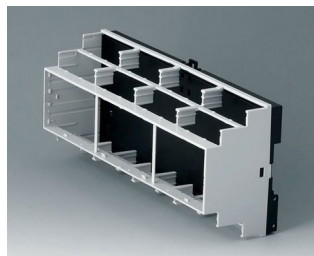
**B6506117**  
RAILTEC B, 12 modules, Vers. IV  
PC (UL 94 V-0)  
light gray RAL 7035  
8.27"x3.54"x2.28"



**B6506118**  
RAILTEC B, 12 modules, Vers. IV  
PC (UL 94 V-0)  
light gray RAL 7035  
8.27"x3.54"x2.28"



**B6506119**  
RAILTEC B, 12 modules, Vers. V  
PC (UL 94 V-0)  
light gray RAL 7035  
8.27"x3.54"x2.28"



**B6506121**  
RAILTEC B, 12 modules, Vers. VI  
PC (UL 94 V-0)  
light gray RAL 7035  
8.27"x3.54"x2.28"



**B6511111**  
RAILTEC B, 2 modules, Vers. XI  
PC (UL 94 V-0)  
light gray RAL 7035  
1.38"x3.39"x2.28"



**B6511112**  
RAILTEC B, 2 modules, Vers. XII  
PC (UL 94 V-0)  
light gray RAL 7035  
1.38"x3.39"x2.28"



**B6511113**  
RAILTEC B, 2 modules, Vers. XIII  
PC (UL 94 V-0)  
light gray RAL 7035  
1.38"x3.39"x2.28"



**B6513111**  
RAILTEC B, 4 modules, Vers. XI  
PC (UL 94 V-0)  
light gray RAL 7035  
2.76"x3.39"x2.28"



**B6513112**  
RAILTEC B, 4 modules, Vers. XII  
PC (UL 94 V-0)  
light gray RAL 7035  
2.76"x3.39"x2.28"



**B6513113**  
RAILTEC B, 4 modules, Vers. XIII  
PC (UL 94 V-0)  
light gray RAL 7035  
2.76"x3.39"x2.28"

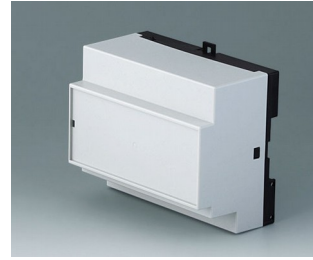
# RAILTEC B



**B6514111**  
 RAILTEC B, 6 modules, Vers. XI  
 PC (UL 94 V-0)  
 light gray RAL 7035  
 4.13"x3.39"x2.32"



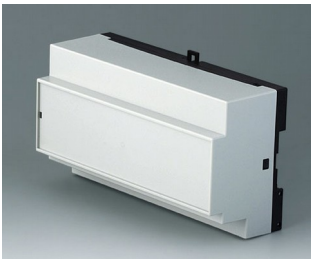
**B6514112**  
 RAILTEC B, 6 modules, Vers. XII  
 PC (UL 94 V-0)  
 light gray RAL 7035  
 4.13"x3.39"x2.32"



**B6514113**  
 RAILTEC B, 6 modules, Vers. XIII  
 PC (UL 94 V-0)  
 light gray RAL 7035  
 4.13"x3.39"x2.32"



**B6515111**  
 RAILTEC B, 9 modules, Vers. XI  
 PC (UL 94 V-0)  
 light gray RAL 7035  
 6.18"x3.39"x2.32"



**B6515112**  
 RAILTEC B, 9 modules, Vers. XII  
 PC (UL 94 V-0)  
 light gray RAL 7035  
 6.18"x3.39"x2.32"



**B6515113**  
 RAILTEC B, 9 modules, Vers. XIII  
 PC (UL 94 V-0)  
 light gray RAL 7035  
 6.18"x3.39"x2.32"

## Accessory "wall/holder"

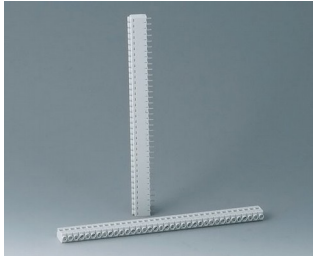


**B6600334**  
 Wall suspension elements  
 PPO (UL 94 V-0)  
 black

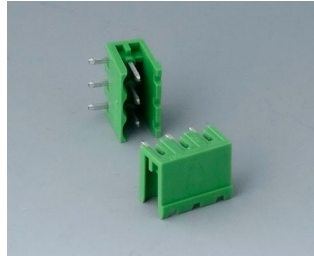


# RAILTEC B

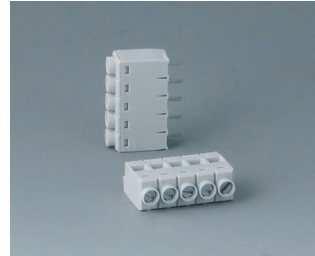
## Accessory "terminals"



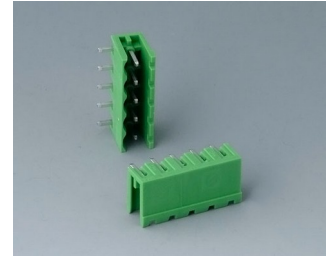
**B6600111**  
Terminal block, block 5.0 mm  
PA 68 (UL 94 V-0)  
light gray



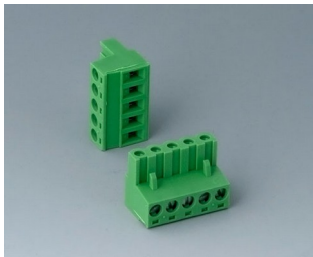
**B6600222**  
Plug header, block 5.08 mm  
PA 68 (UL 94 V-0)



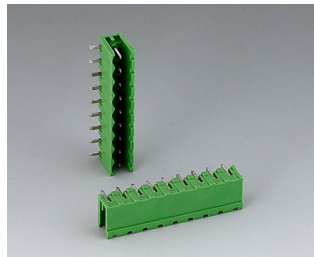
**B6601111**  
Terminal block, block 5.0 mm  
PA 68 (UL 94 V-0)



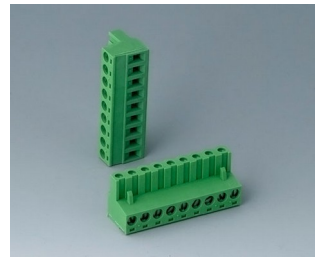
**B6601222**  
Plug header, block 5.08 mm  
PA 6 (UL 94 V-0)



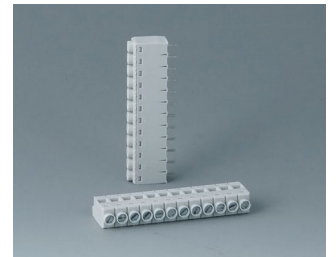
**B6601223**  
Plug header, block 5.08 mm  
PA 6 (UL 94 V-0)



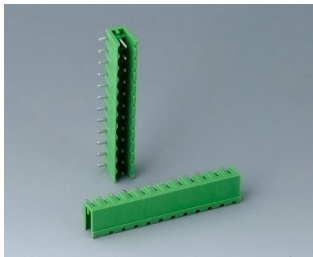
**B6602222**  
Plug header, block 5.08 mm  
PA 6 (UL 94 V-0)



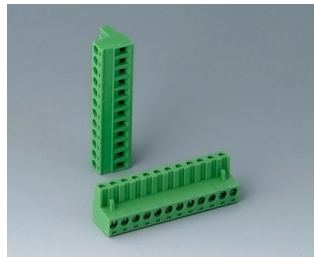
**B6602223**  
Plug header, block 5.08 mm  
PA 6 (UL 94 V-0)



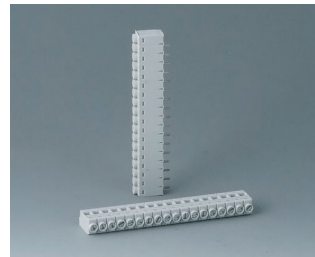
**B6603111**  
Terminal block, block 5.0 mm  
PA 68 (UL 94 V-0)



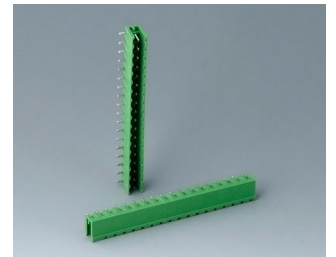
**B6603222**  
Plug header, block 5.08 mm  
PA 6 (UL 94 V-0)



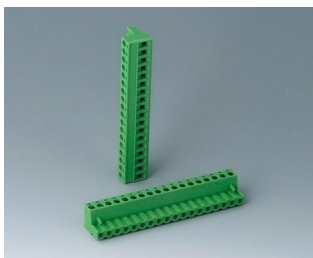
**B6603223**  
Plug header, block 5.08 mm  
PA 6 (UL 94 V-0)



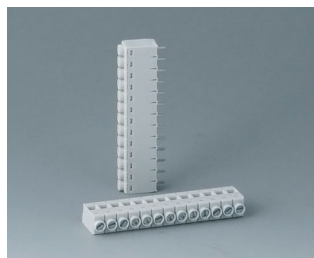
**B6604111**  
Terminal block, block 5.0 mm  
PA 68 (UL 94 V-0)



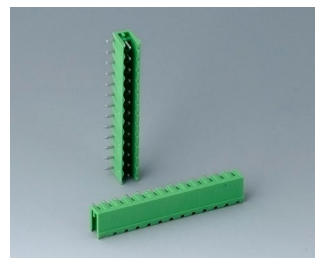
**B6604222**  
Plug header, block 5.08 mm  
PA 68 (UL 94 V-0)



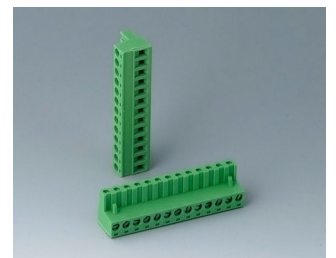
**B6604223**  
Plug header, block 5.08 mm  
PA 68 (UL 94 V-0)



**B6605111**  
Terminal block, block 5.0 mm  
PA 68 (UL 94 V-0)

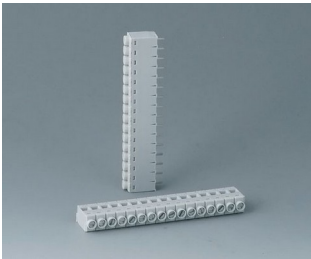


**B6605222**  
Plug header, block 5.08 mm  
PA 6 (UL 94 V-0)

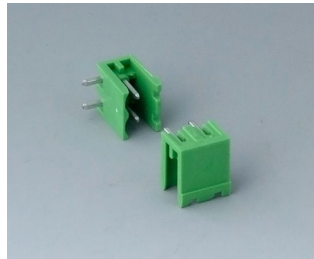


**B6605223**  
Plug header, block 5.08 mm  
PA 6 (UL 94 V-0)

# RAILTEC B



**B6606111**  
Terminal block, block 5.0 mm  
PA 68 (UL 94 V-0)



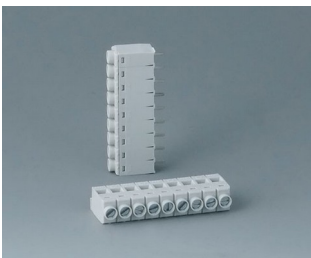
**B6606222**  
Plug header, block 5.08 mm  
PA 6 (UL 94 V-0)



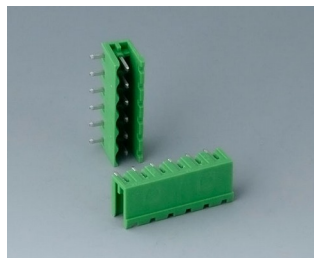
**B6606223**  
Plug header, block 5.08 mm  
PA 6 (UL 94 V-0)



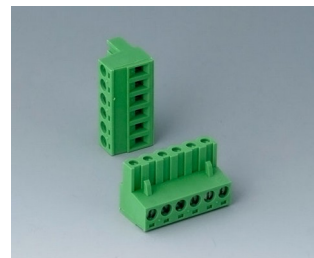
**B6607111**  
Terminal block, block 5.0 mm  
PA 68 (UL 94 V-0)



**B6608111**  
Terminal block, block 5.0 mm  
PA 68 (UL 94 V-0)



**B6608222**  
Plug header, block 5.08 mm  
PA 68 (UL 94 V-0)



**B6608223**  
Plug header, block 5.08 mm  
PA 68 (UL 94 V-0)

## Accessory "terminal guards"



**B6607140**  
Terminal guards, flat  
PC (UL 94 V-0)  
light gray



**B6607141**  
Terminal guards, flat  
PC (UL 94 V-0)  
light gray



**B6607142**  
Terminal guards, flat  
PC (UL 94 V-0)  
light gray



**B6607143**  
Terminal guards, flat  
PC (UL 94 V-0)  
light gray



**B6607145**  
KNX Cover, flat  
PC (UL 94 V-0)  
light gray



**B6607160**  
Terminal guards, high  
PC (UL 94 V-0)  
light gray



**B6607161**  
Terminal guards, high  
PC (UL 94 V-0)  
light gray

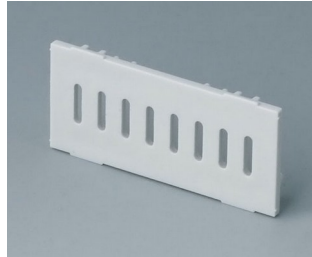


**B6607162**  
Terminal guards, high  
PC (UL 94 V-0)  
light gray

# RAILTEC B



**B6607163**  
 Terminal guards, high  
 PC (UL 94 V-0)  
 light gray



**B6607191**  
 Partition plate  
 PC (UL 94 V-0)  
 light gray



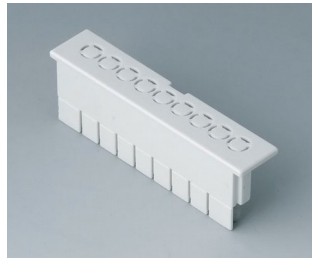
**B6608140**  
 Terminal guards, flat  
 PC (UL 94 V-0)  
 light gray



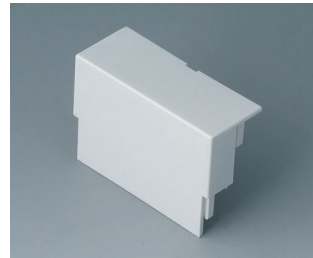
**B6608141**  
 Terminal guards, flat  
 PC (UL 94 V-0)  
 light gray



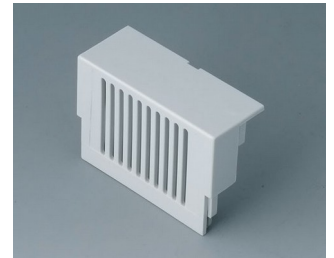
**B6608142**  
 Terminal guards, flat  
 PC (UL 94 V-0)  
 light gray



**B6608143**  
 Terminal guards, flat  
 PC (UL 94 V-0)  
 light gray



**B6608160**  
 Terminal guards, high  
 PC (UL 94 V-0)  
 light gray



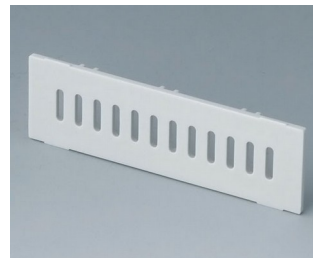
**B6608161**  
 Terminal guards, high  
 PC (UL 94 V-0)  
 light gray



**B6608162**  
 Terminal guards, high  
 PC (UL 94 V-0)  
 light gray



**B6608163**  
 Terminal guards, high  
 PC (UL 94 V-0)  
 light gray



**B6608191**  
 Partition plate  
 PC (UL 94 V-0)  
 light gray

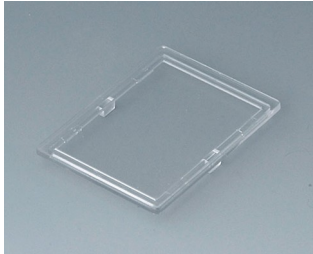
## Accessory "screws"



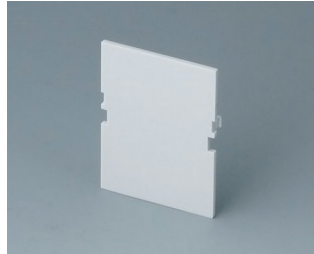
**A0305031**  
 Self-tapping screws 0.098" x  
 0.236" (PZ1)

# RAILTEC B

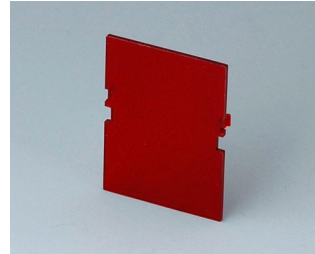
## Accessory



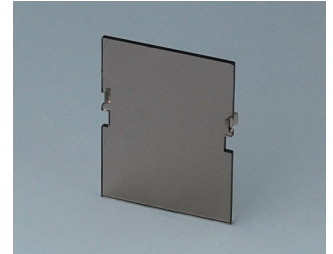
**B6601100**  
Lid, 2 modules  
PC (UL 94 V-0)  
transparent



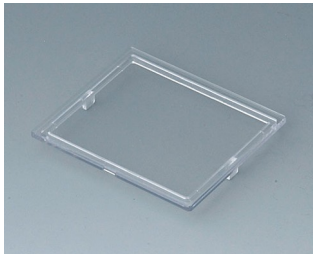
**B6601180**  
Front panel, 2 modules, Vers. VI  
PC (UL 94 V-0)  
light gray  
1.26"x1.65"



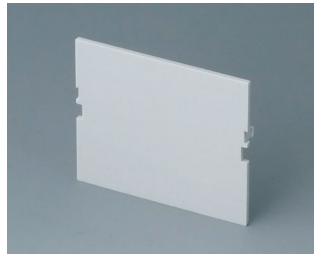
**B6601480**  
Front panel, 2 modules, Vers. VI  
PC (UL 94 V-0)  
red transparent  
1.26"x1.65"



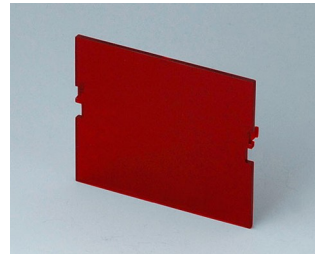
**B6601580**  
Front panel, 2 modules, Vers. VI  
PC (UL 94 V-0)  
smoked glass  
1.26"x1.65"



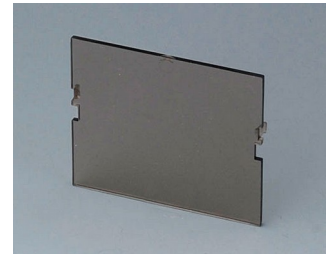
**B6602100**  
Lid, 3 modules  
PC (UL 94 V-0)  
transparent



**B6602180**  
Front panel, 3 modules, Vers. VI  
PC (UL 94 V-0)  
light gray  
1.93"x1.65"



**B6602480**  
Front panel, 3 modules, Vers. VI  
PC (UL 94 V-0)  
red transparent  
1.93"x1.65"



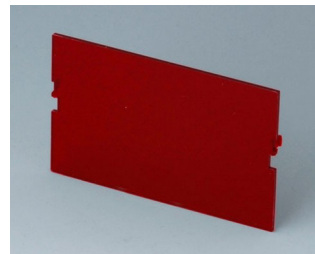
**B6602580**  
Front panel, 3 modules, Vers. VI  
PC (UL 94 V-0)  
smoked glass  
1.65"x1.93"



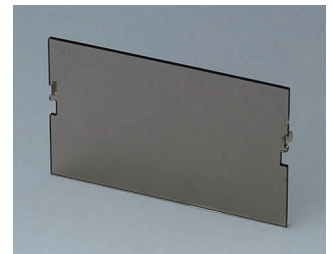
**B6603100**  
Lid, 4 modules  
PC (UL 94 V-0)  
transparent



**B6603180**  
Front panel, 4 modules, Vers. VI  
PC (UL 94 V-0)  
light gray  
2.64"x1.65"



**B6603480**  
Front panel, 4 modules, Vers. VI  
PC (UL 94 V-0)  
red transparent  
2.64"x1.65"



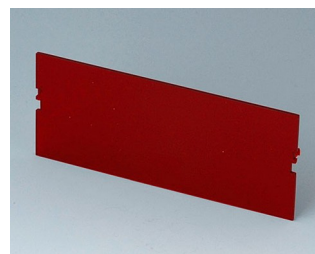
**B6603580**  
Front panel, 4 modules, Vers. VI  
PC (UL 94 V-0)  
smoked glass  
2.64"x1.65"



**B6604100**  
Lid, 6 modules  
PC (UL 94 V-0)  
transparent



**B6604180**  
Front panel, 6 modules, Vers. VI  
PC (UL 94 V-0)  
light gray  
4.02"x1.65"



**B6604480**  
Front panel, 6 modules, Vers. VI  
PC (UL 94 V-0)  
red transparent  
4.02"x1.65"

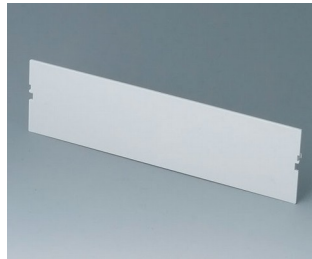


**B6604580**  
Front panel, 6 modules, Vers. VI  
PC (UL 94 V-0)  
smoked glass  
4.02"x1.65"

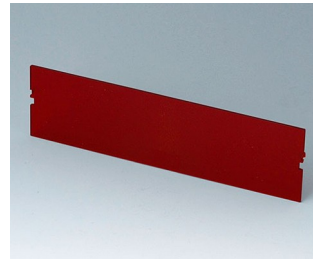
# RAILTEC B



**B6605100**  
 Lid, 9 modules  
 PC (UL 94 V-0)  
 transparent



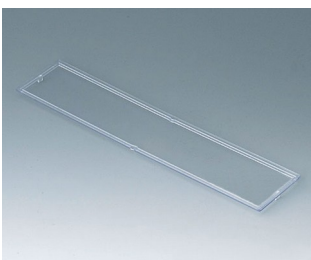
**B6605180**  
 Front panel, 9 modules, Vers. VI  
 PC (UL 94 V-0)  
 light gray  
 6.10"x1.65"



**B6605480**  
 Front panel, 9 modules, Vers. VI  
 PC (UL 94 V-0)  
 red transparent  
 6.10"x1.65"



**B6605580**  
 Front panel, 9 modules, Vers. VI  
 PC (UL 94 V-0)  
 smoked glass  
 6.10"x1.65"



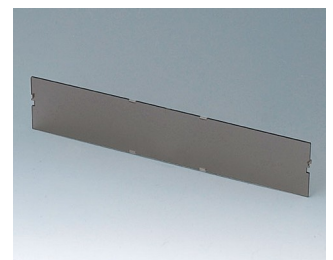
**B6606100**  
 Lid, 12 modules  
 PC (UL 94 V-0)  
 transparent



**B6606180**  
 Front panel, 12 modules, Vers. VI  
 PC (UL 94 V-0)  
 light gray  
 8.11"x1.65"



**B6606480**  
 Front panel, 12 modules, Vers. VI  
 PC (UL 94 V-0)  
 red transparent  
 8.11"x1.65"



**B6606580**  
 Front panel, 12 modules, Vers. VI  
 PC (UL 94 V-0)  
 smoked glass  
 8.11"x1.65"

Subject to technical modification without notice. © by OKW Gehäusesysteme, Buchen/Germany.