

# RAILTEC C

## Modular DIN rail enclosures and open PCB holders

Extensive range of DIN rail cases for mounting to standard DIN EN 60715 rails, or for panel mounting. Also, open DIN rail PCB supports/holders for individual component mounting and simple replacement of the interfaces.

- all types designed for fast installation of PCBs and terminals
- outstanding material properties for tough conditions, with high temperature stability (UL 94 V-0)
- easy and fast assembly with snap-in installation of the enclosure parts
- **RAILTEC C:** for PCB terminal blocks, plug headers and front connectors; optional frame for additional PCB position; front panels and lids in different versions; 1 to 12 module widths; for DIN rails EN 60715 TH35; PCB positioning in all 3 directions; adapter for TH15 and G32 rails (1 to 4 module models) as accessory
- Version I front open, connection side with free through passage, without ventilation slots
- Version II front open, connection side with free through passage, with ventilation slots
- Version III front open, connection side with extended case wall, without ventilation slots
- Version IV front closed, connection side with free through passage, without ventilation slots
- **RAILTEC SUPPORT:** PCB holder for DIN rail mounting; modular design for individual component mounting; for DIN rails EN 60715 TH35, TH15 and G32
- protection class < IP 40



[View Customizing Options](#)

# RAILTEC C

What do you still need for your own very personal product? We can supply enclosures and tuning knobs with all necessary modifications for fitting your electronic components.  
Customizing options for Railtec C



Machining



Lacquering



Printing



Laser marking



Decor foils



Installation / Assembly  
of accessories

## Select Versions



**B6700100**  
RAILTEC C, 1 module, Vers. I  
PC (UL 94 V-0)  
light gray  
0.69"x3.54"x2.28"



**B6700102**  
RAILTEC C, 1 module, Vers. II  
PC (UL 94 V-0)  
light gray  
0.69"x3.54"x2.28"



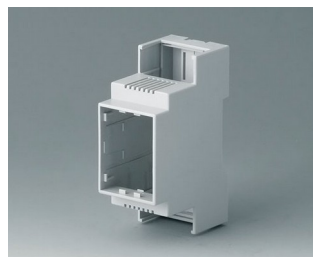
**B6700104**  
RAILTEC C, 1 module, Vers. III  
PC (UL 94 V-0)  
light gray  
0.69"x3.54"x2.28"



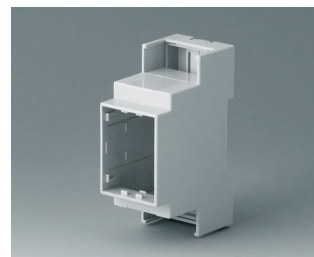
**B6700106**  
RAILTEC C, 1 module, Vers. IV  
PC (UL 94 V-0)  
light gray  
0.69"x3.54"x2.28"



**B6701100**  
RAILTEC C, 2 modules, Vers. I  
PC (UL 94 V-0)  
light gray  
1.42"x3.54"x2.28"



**B6701102**  
RAILTEC C, 2 modules, Vers. II  
PC (UL 94 V-0)  
light gray  
1.42"x3.54"x2.28"

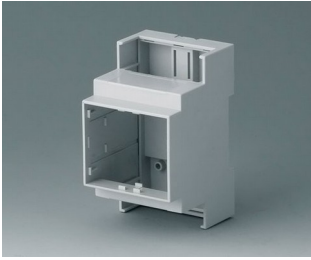


**B6701104**  
RAILTEC C, 2 modules, Vers. III  
PC (UL 94 V-0)  
light gray  
1.42"x3.54"x2.28"

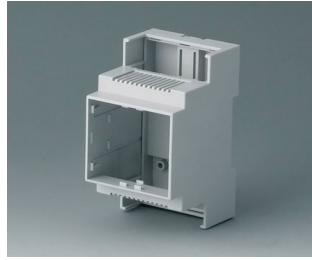


**B6701106**  
RAILTEC C, 2 modules, Vers. IV  
PC (UL 94 V-0)  
light gray  
1.42"x3.54"x2.28"

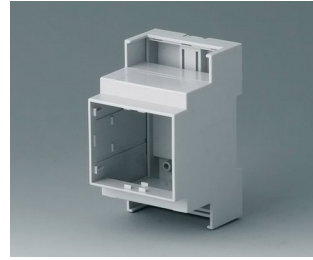
# RAILTEC C



**B6702100**  
 RAILTEC C, 3 modules, Vers. I  
 PC (UL 94 V-0)  
 light gray  
 2.09"x3.54"x2.28"



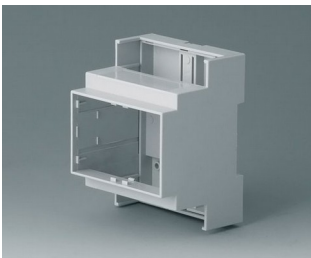
**B6702102**  
 RAILTEC C, 3 modules, Vers. II  
 PC (UL 94 V-0)  
 light gray  
 2.09"x3.54"x2.28"



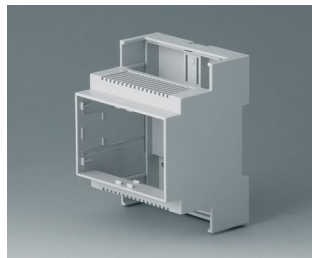
**B6702104**  
 RAILTEC C, 3 modules, Vers. III  
 PC (UL 94 V-0)  
 light gray  
 2.09"x3.54"x2.28"



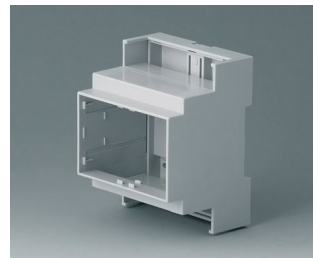
**B6702106**  
 RAILTEC C, 3 modules, Vers. IV  
 PC (UL 94 V-0)  
 light gray  
 2.09"x3.54"x2.28"



**B6703100**  
 RAILTEC C, 4 modules, Vers. I  
 PC (UL 94 V-0)  
 light gray  
 2.80"x3.54"x2.28"



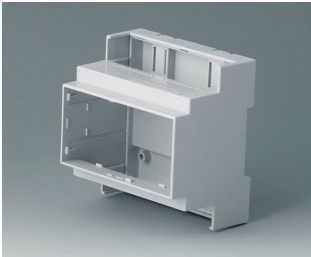
**B6703102**  
 RAILTEC C, 4 modules, Vers. II  
 PC (UL 94 V-0)  
 light gray  
 2.80"x3.54"x2.28"



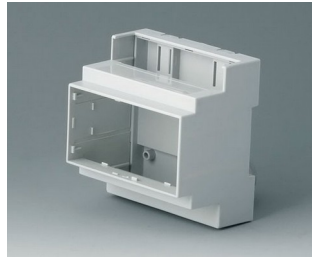
**B6703104**  
 RAILTEC C, 4 modules, Vers. III  
 PC (UL 94 V-0)  
 light gray  
 2.80"x3.54"x2.28"



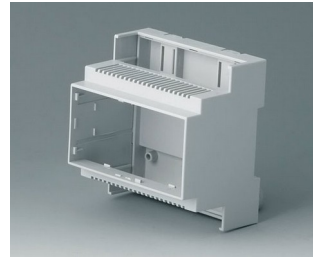
**B6703106**  
 RAILTEC C, 4 modules, Vers. IV  
 PC (UL 94 V-0)  
 light gray  
 2.80"x3.54"x2.28"



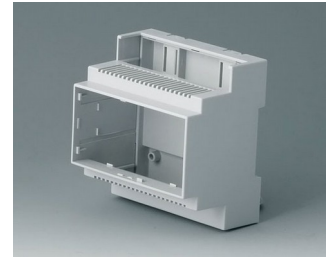
**B6704100**  
 RAILTEC C, 5 modules, Vers. I  
 PC (UL 94 V-0)  
 light gray  
 3.46"x3.54"x2.28"



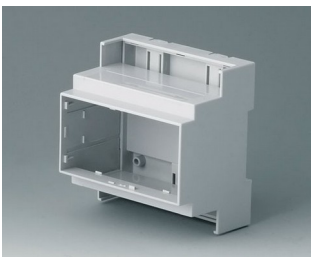
**B6704101**  
 RAILTEC C, 5 modules, Vers. I  
 PC (UL 94 V-0)  
 light gray  
 3.46"x3.54"x2.28"



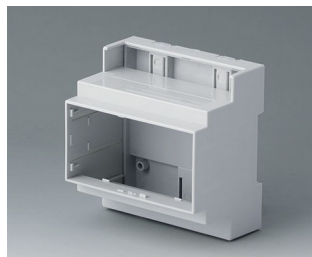
**B6704102**  
 RAILTEC C, 5 modules, Vers. II  
 PC (UL 94 V-0)  
 light gray  
 3.46"x3.54"x2.28"



**B6704103**  
 RAILTEC C, 5 modules, Vers. II  
 PC (UL 94 V-0)  
 light gray  
 3.46"x3.54"x2.28"



**B6704104**  
 RAILTEC C, 5 modules, Vers. III  
 PC (UL 94 V-0)  
 light gray  
 3.46"x3.54"x2.28"



**B6704105**  
 RAILTEC C, 5 modules, Vers. III  
 PC (UL 94 V-0)  
 light gray  
 3.46"x3.54"x2.28"

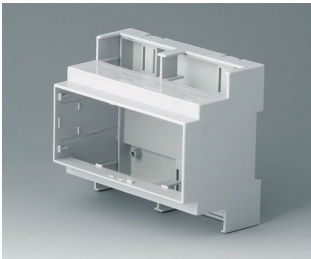


**B6704106**  
 RAILTEC C, 5 modules, Vers. IV  
 PC (UL 94 V-0)  
 light gray  
 3.46"x3.54"x2.28"

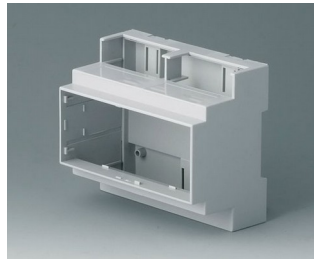


**B6704107**  
 RAILTEC C, 5 modules, Vers. IV  
 PC (UL 94 V-0)  
 light gray  
 3.46"x3.54"x2.28"

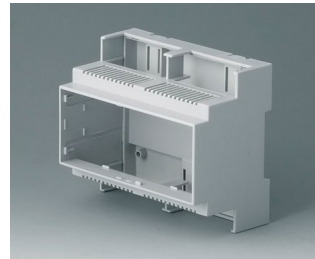
# RAILTEC C



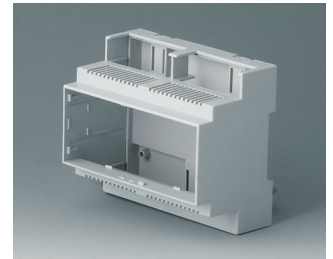
**B6705100**  
RAILTEC C, 6 modules, Vers. I  
PC (UL 94 V-0)  
light gray  
4.17"x3.54"x2.28"



**B6705101**  
RAILTEC C, 6 modules, Vers. I  
PC (UL 94 V-0)  
light gray  
4.17"x3.54"x2.28"



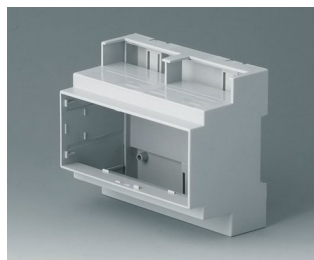
**B6705102**  
RAILTEC C, 6 modules, Vers. II  
PC (UL 94 V-0)  
light gray  
4.17"x3.54"x2.28"



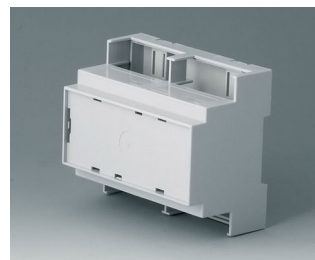
**B6705103**  
RAILTEC C, 6 modules, Vers. II  
PC (UL 94 V-0)  
light gray  
4.17"x3.54"x2.28"



**B6705104**  
RAILTEC C, 6 modules, Vers. III  
PC (UL 94 V-0)  
light gray  
4.17"x3.54"x2.28"



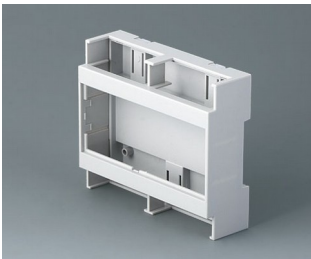
**B6705105**  
RAILTEC C, 6 modules, Vers. III  
PC (UL 94 V-0)  
light gray  
4.17"x3.54"x2.28"



**B6705106**  
RAILTEC C, 6 modules, Vers. IV  
PC (UL 94 V-0)  
light gray  
4.17"x3.54"x2.28"



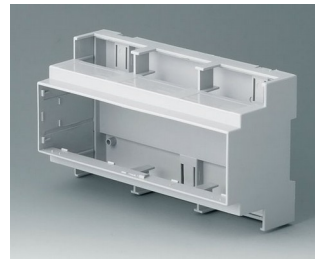
**B6705107**  
RAILTEC C, 6 modules, Vers. IV  
PC (UL 94 V-0)  
light gray  
4.17"x3.54"x2.28"



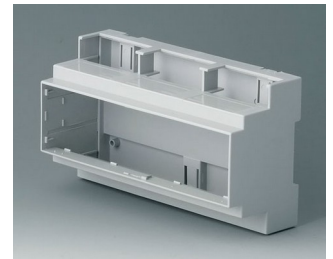
**B6705800**  
RAILTEC C, 6 modules, flat,  
Vers. I  
PC (UL 94 V-0)  
light gray  
4.18"x3.54"x1.26"



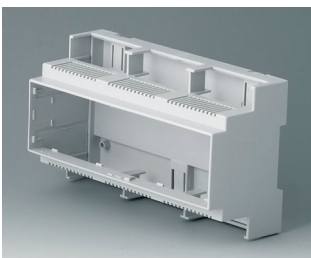
**B6705806**  
RAILTEC C, 6 modules, flat,  
Vers. IV  
PC (UL 94 V-0)  
light gray  
4.18"x3.54"x1.26"



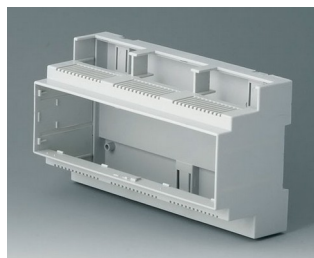
**B6706100**  
RAILTEC C, 9 modules, Vers. I  
PC (UL 94 V-0)  
light gray  
6.30"x3.54"x2.28"



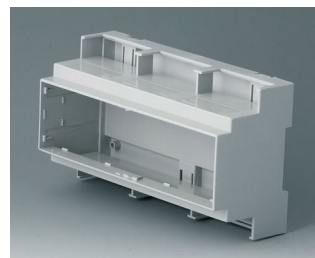
**B6706101**  
RAILTEC C, 9 modules, Vers. I  
PC (UL 94 V-0)  
light gray  
6.30"x3.54"x2.28"



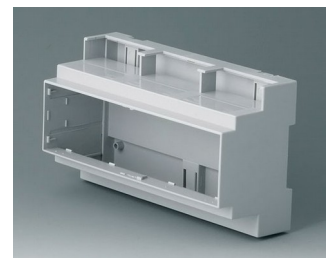
**B6706102**  
RAILTEC C, 9 modules, Vers. II  
PC (UL 94 V-0)  
light gray  
6.30"x3.54"x2.28"



**B6706103**  
RAILTEC C, 9 modules, Vers. II  
PC (UL 94 V-0)  
light gray  
6.30"x3.54"x2.28"

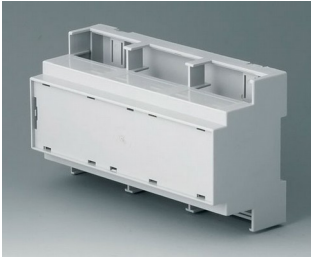


**B6706104**  
RAILTEC C, 9 modules, Vers. III  
PC (UL 94 V-0)  
light gray  
6.30"x3.54"x2.28"

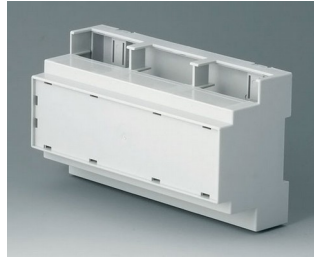


**B6706105**  
RAILTEC C, 9 modules, Vers. III  
PC (UL 94 V-0)  
light gray  
6.30"x3.54"x2.28"

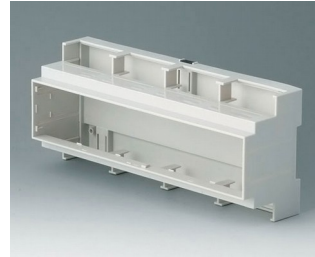
# RAILTEC C



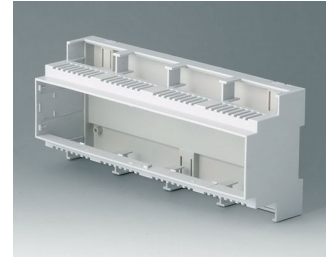
**B6706106**  
RAILTEC C, 9 modules, Vers. IV  
PC (UL 94 V-0)  
light gray  
6.30"x3.54"x2.28"



**B6706107**  
RAILTEC C, 9 modules, Vers. IV  
PC (UL 94 V-0)  
light gray  
6.30"x3.54"x2.28"



**B6707100**  
RAILTEC C, 12 modules, Vers. I  
PC (UL 94 V-0)  
light gray  
8.27"x3.54"x2.28"



**B6707102**  
RAILTEC C, 12 modules, Vers. II  
PC (UL 94 V-0)  
light gray  
8.27"x3.54"x2.28"



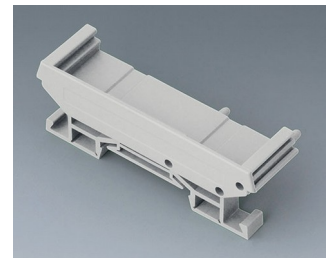
**B6724333**  
RAILTEC SUP. 72, end section  
PA 6 (30) (UL 94 V-0)  
light gray  
3.23"x0.44"x0.63"



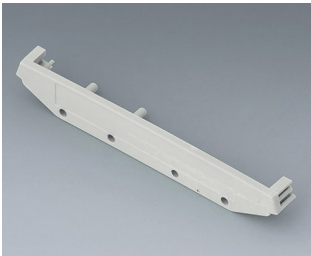
**B6724334**  
RAILTEC SUP. 72, end section  
PA 6 (30) (UL 94 V-0)  
light gray  
3.23"x0.87"x0.63"



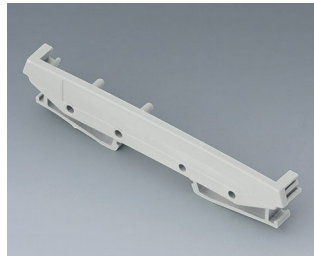
**B6724335**  
RAILTEC SUP. 72, end section  
with foot  
PA 6 (30) (UL 94 V-0)  
light gray  
3.23"x0.44"x0.89"



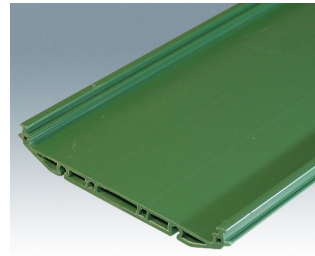
**B6724336**  
RAILTEC SUP. 72, end section  
with foot  
PA 6 (30) (UL 94 V-0)  
light gray  
3.23"x0.87"x0.89"



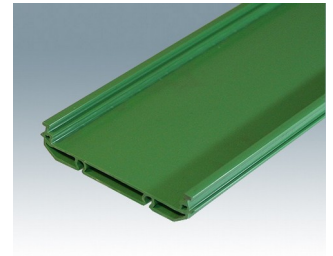
**B6724444**  
RAILTEC SUP. 107, end section  
PA 6 (30) (UL 94 V-0)  
light gray  
4.65"x0.45"x0.69"



**B6724445**  
RAILTEC SUP. 107, end section  
with foot  
PA 6 (30) (UL 94 V-0)  
light gray  
4.65"x0.45"x1.08"



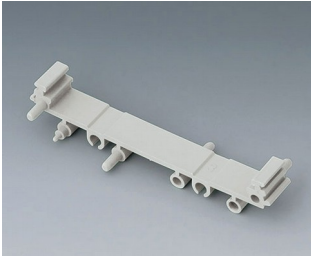
**CIME/E/BExxx**  
RAILTEC SUP. EXT 107, base  
section  
PVC (UL 94 V-0)  
green  
4.61"x0.71"



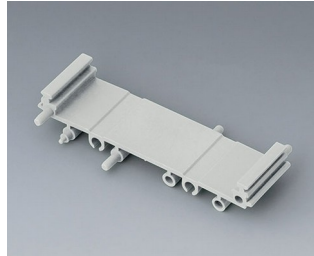
**CIME/M/BExxx**  
RAILTEC SUP. EXT 72, base  
section  
PVC (UL 94 V-0)  
green  
3.15"x0.63"

# RAILTEC C

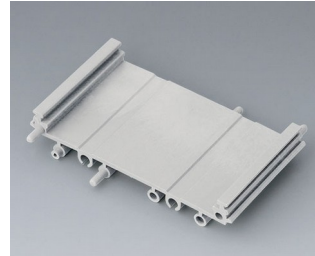
## System components to complete



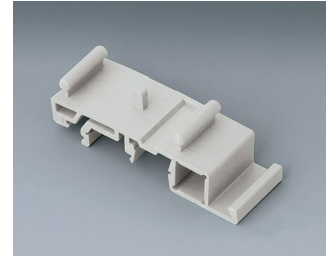
**B6724330**  
RAILTEC SUP. 72, intermediate part  
PA 6 (30) (UL 94 V-0)  
light gray  
3.23"x0.44"x0.63"



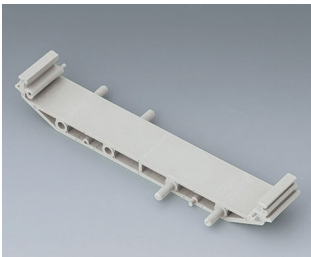
**B6724331**  
RAILTEC SUP. 72, intermediate part  
PA 6 (30) (UL 94 V-0)  
light gray  
3.23"x0.89"x0.63"



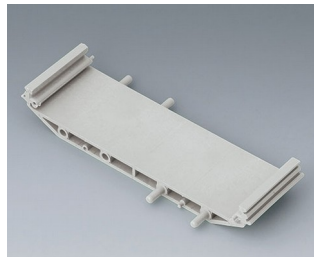
**B6724332**  
RAILTEC SUP. 72, intermediate part  
PA 6 (30) (UL 94 V-0)  
light gray  
3.23"x1.77"x0.63"



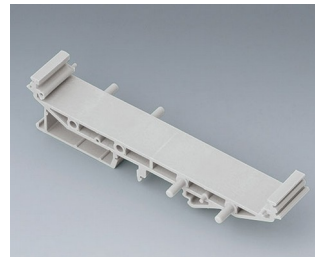
**B6724337**  
RAILTEC SUP. 72, foot  
PA 6 (30) (UL 94 V-0)  
light gray



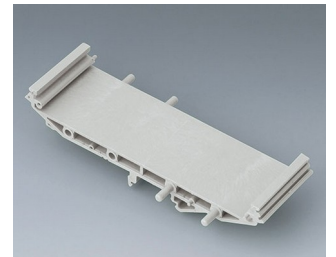
**B6724440**  
RAILTEC SUP. 107, intermediate part  
PA 6 (30) (UL 94 V-0)  
light gray  
4.65"x0.73"x0.69"



**B6724441**  
RAILTEC SUP. 107, intermediate part  
PA 6 (30) (UL 94 V-0)  
light gray  
4.65"x1.38"x0.69"

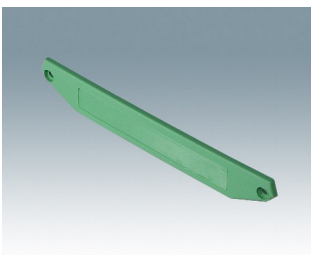


**B6724442**  
RAILTEC SUP. 107, intermediate p. + foot  
PA 6 (30) (UL 94 V-0)  
light gray  
4.65"x0.73"x1.08"

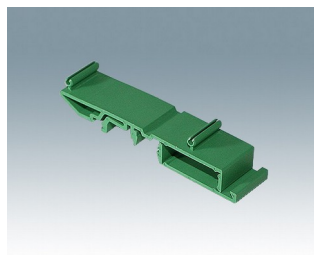


**B6724443**  
RAILTEC SUP. 107, intermediate p. + foot  
PA 6 (30) (UL 94 V-0)  
light gray  
4.65"x1.38"x1.08"

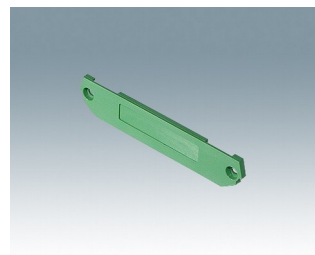
## Accessory to complete



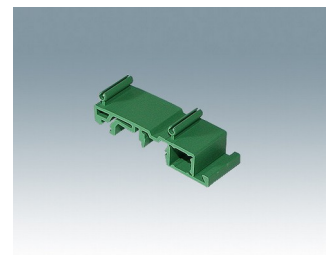
**CIME/E/EC0000E**  
RAILTEC SUP. EXT 107, end cover  
PA66 (UL 94 V-0)  
green  
0.10"x0.69"x4.65"



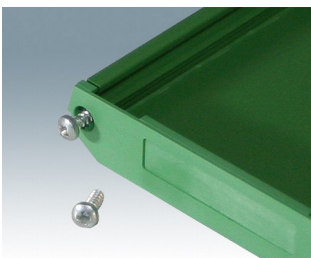
**CIME/E/FE0000E**  
RAILTEC SUP. EXT 107, DIN rail foot  
PA66 (UL 94 V-0)  
green  
0.81"x0.49"x3.60"



**CIME/M/EC0000E**  
RAILTEC SUP. EXT 72, end cover  
PA66 (UL 94 V-0)  
green  
0.08"x0.63"x3.23"



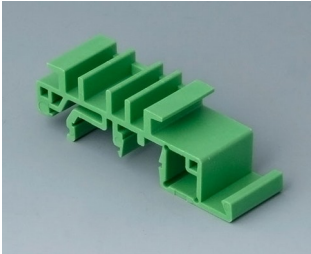
**CIME/M/FE0000E**  
RAILTEC SUP. EXT 72, DIN rail foot  
PA66 (UL 94 V-0)  
green  
0.81"x0.49"x2.36"



**CIME/M/SCR**  
Self-tapping screw

# RAILTEC C

## Accessory "wall/holder"



**B6811542**  
Adapter  
PA 6 (UL 94 V-0)  
green



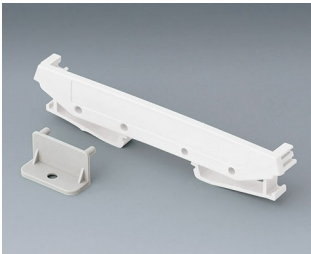
**B6824532**  
Wall suspension element for  
SUP. 72  
PA 6 (30) (UL 94 V-0)  
light gray



**B6824533**  
Wall suspension element with  
foot, SUP.  
PA 6 (30) (UL 94 V-0)  
light gray

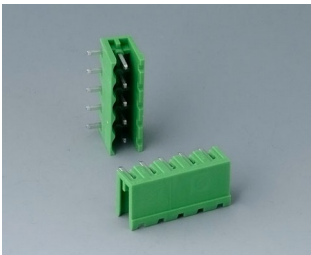


**B6824542**  
Wall suspension element for  
SUP. 107  
PA 6 (30) (UL 94 V-0)  
light gray

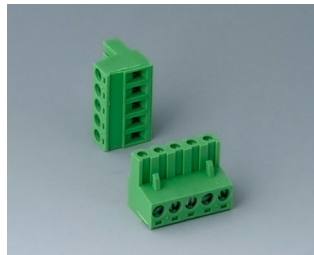


**B6824543**  
Wall suspension element with  
foot, SUP.  
PA 6 (30) (UL 94 V-0)  
light gray

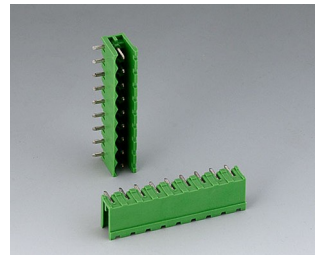
## Accessory "terminals"



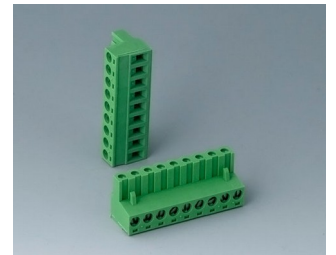
**B6601222**  
Plug header, block 5.08 mm  
PA 6 (UL 94 V-0)



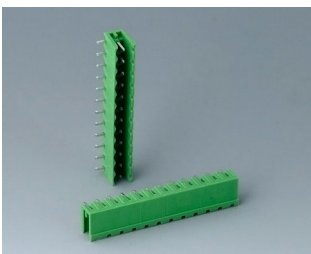
**B6601223**  
Plug header, block 5.08 mm  
PA 6 (UL 94 V-0)



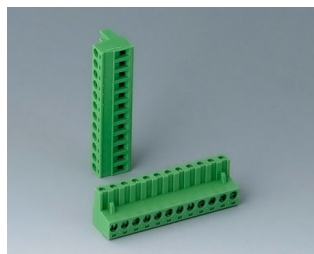
**B6602222**  
Plug header, block 5.08 mm  
PA 6 (UL 94 V-0)



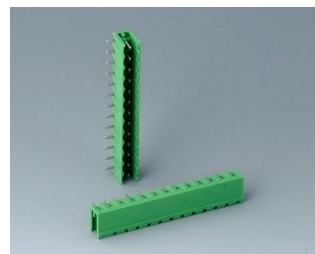
**B6602223**  
Plug header, block 5.08 mm  
PA 6 (UL 94 V-0)



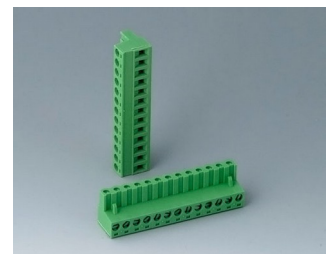
**B6603222**  
Plug header, block 5.08 mm  
PA 6 (UL 94 V-0)



**B6603223**  
Plug header, block 5.08 mm  
PA 6 (UL 94 V-0)

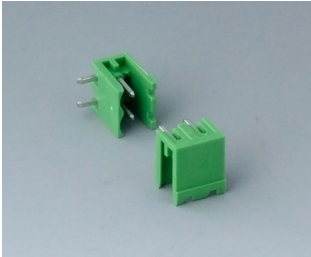


**B6605222**  
Plug header, block 5.08 mm  
PA 6 (UL 94 V-0)



**B6605223**  
Plug header, block 5.08 mm  
PA 6 (UL 94 V-0)

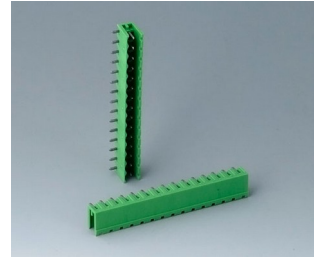
# RAILTEC C



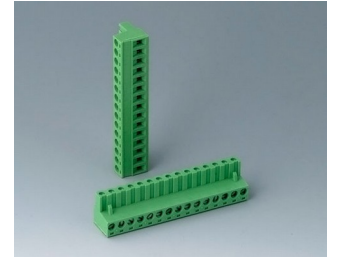
**B6606222**  
 Plug header, block 5.08 mm  
 PA 6 (UL 94 V-0)



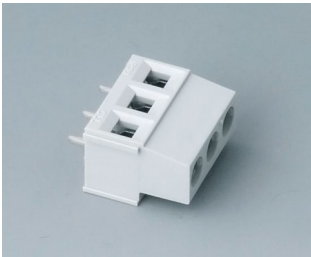
**B6606223**  
 Plug header, block 5.08 mm  
 PA 6 (UL 94 V-0)



**B6607222**  
 Plug header, block 5.08 mm  
 PA 6 (UL 94 V-0)



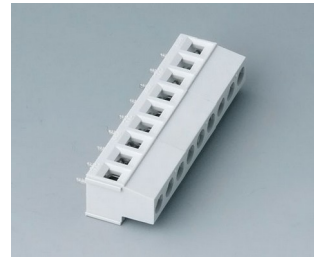
**B6607223**  
 Plug header, block 5.08 mm  
 PA 6 (UL 94 V-0)



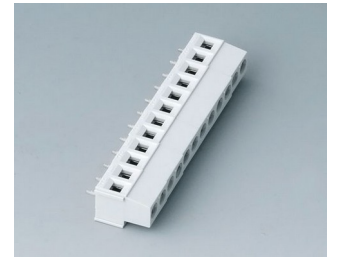
**B6800650**  
 Terminal block, block 5.08 mm  
 PA 68 (UL 94 V-0)  
 light gray



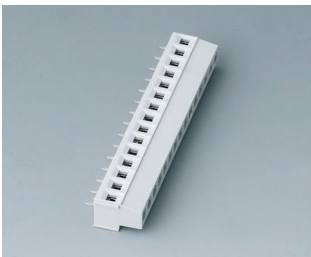
**B6801650**  
 Terminal block, block 5.08 mm  
 PA 68 (UL 94 V-0)  
 light gray



**B6802650**  
 Terminal block, block 5.08 mm  
 PA 68 (UL 94 V-0)  
 light gray



**B6803650**  
 Terminal block, block 5.08 mm  
 PA 68 (UL 94 V-0)  
 light gray

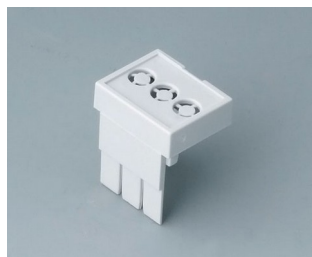


**B6804650**  
 Terminal block, block 5.08 mm  
 PA 68 (UL 94 V-0)  
 light gray

## Accessory "terminal guards"



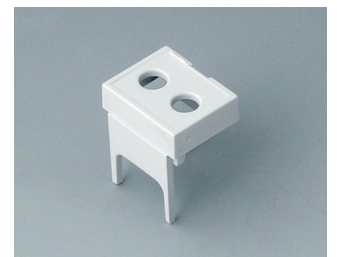
**B6800111**  
 Terminal guards, closed  
 PC (UL 94 V-0)  
 light gray



**B6800112**  
 Terminal guards, perforated,  
 5.08 mm  
 PC (UL 94 V-0)  
 light gray



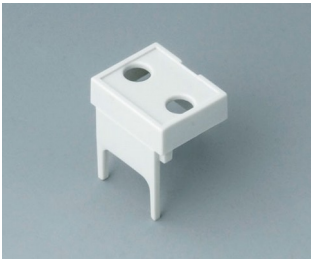
**B6800113**  
 Terminal guards, with holes, 5.08  
 mm  
 PC (UL 94 V-0)  
 light gray



**B6800114**  
 Terminal guards, with holes, 7.5  
 mm & 7.62 mm  
 PC (UL 94 V-0)  
 light gray



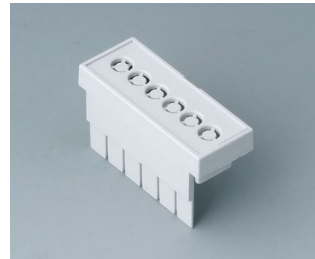
# RAILTEC C



**B6800115**  
Terminal guards, with holes,  
10.16 mm  
PC (UL 94 V-0)  
light gray



**B6801111**  
Terminal guards, closed  
PC (UL 94 V-0)  
light gray



**B6801112**  
Terminal guards, perforated,  
5.08 mm  
PC (UL 94 V-0)  
light gray



**B6801113**  
Terminal guards, with holes, 5.08  
mm  
PC (UL 94 V-0)  
light gray



**B6801114**  
Terminal guards, with holes, 7.5  
mm & 7.62 mm  
PC (UL 94 V-0)  
light gray



**B6801115**  
Terminal guards, with holes,  
10.16 mm  
PC (UL 94 V-0)  
light gray



**B6802111**  
Terminal guards, closed  
PC (UL 94 V-0)  
light gray



**B6802112**  
Terminal guards, perforated,  
5.08 mm  
PC (UL 94 V-0)  
light gray



**B6802113**  
Terminal guards, with holes, 5.08  
mm  
PC (UL 94 V-0)  
light gray



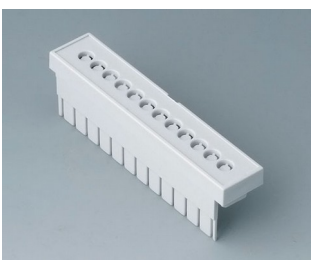
**B6802114**  
Terminal guards, with holes, 7.5  
mm & 7.62 mm  
PC (UL 94 V-0)  
light gray



**B6802115**  
Terminal guards, with holes,  
10.16 mm  
PC (UL 94 V-0)  
light gray



**B6803111**  
Terminal guards, closed  
PC (UL 94 V-0)  
light gray



**B6803112**  
Terminal guards, perforated,  
5.08 mm  
PC (UL 94 V-0)  
light gray



**B6803113**  
Terminal guards, with holes, 5.08  
mm  
PC (UL 94 V-0)  
light gray



**B6803114**  
Terminal guards, with holes, 7.5  
mm & 7.62 mm  
PC (UL 94 V-0)  
light gray

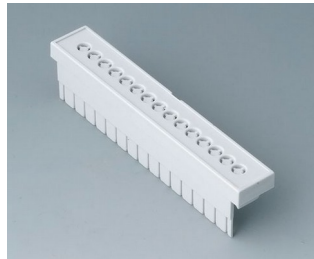


**B6803115**  
Terminal guards, with holes,  
10.16 mm  
PC (UL 94 V-0)  
light gray

# RAILTEC C



**B6804111**  
Terminal guards, closed  
PC (UL 94 V-0)  
light gray



**B6804112**  
Terminal guards, perforated,  
5.08 mm  
PC (UL 94 V-0)  
light gray



**B6804113**  
Terminal guards, with holes, 5.08  
mm  
PC (UL 94 V-0)  
light gray



**B6804114**  
Terminal guards, with holes, 7.5  
mm & 7.62 mm  
PC (UL 94 V-0)  
light gray



**B6804115**  
Terminal guards, with holes,  
10.16 mm  
PC (UL 94 V-0)  
light gray

## Accessory



**B6800100**  
Front panel, 1 module  
PC (UL 94 V-0)  
light gray  
0.55"x1.65"



**B6800200**  
Front panel, 1 module  
PC (UL 94 V-0)  
transparent  
0.55"x1.65"



**B6801100**  
Front panel, 2 modules  
PC (UL 94 V-0)  
light gray  
1.26"x1.65"



**B6801200**  
Front panel, 2 modules  
PC (UL 94 V-0)  
transparent  
1.26"x1.65"



**B6802100**  
Front panel, 3 modules  
PC (UL 94 V-0)  
light gray  
1.93"x1.65"



**B6802200**  
Front panel, 3 modules  
PC (UL 94 V-0)  
transparent  
1.93"x1.65"



**B6803100**  
Front panel, 4 modules  
PC (UL 94 V-0)  
light gray  
2.64"x1.65"



**B6803200**  
Front panel, 4 modules  
PC (UL 94 V-0)  
transparent  
2.64"x1.65"

# RAILTEC C



**B6804100**  
 Front panel, 5 modules  
 PC (UL 94 V-0)  
 light gray  
 3.31"x1.65"



**B6804200**  
 Front panel, 5 modules  
 PC (UL 94 V-0)  
 transparent  
 3.31"x1.65"



**B6805100**  
 Front panel, 6 modules  
 PC (UL 94 V-0)  
 light gray  
 4.02"x1.65"



**B6805200**  
 Front panel, 6 modules  
 PC (UL 94 V-0)  
 transparent  
 4.02"x1.65"



**B6806100**  
 Front panel, 9 modules  
 PC (UL 94 V-0)  
 light gray  
 6.10"x1.65"



**B6806200**  
 Front panel, 9 modules  
 PC (UL 94 V-0)  
 transparent  
 6.10"x1.65"



**B6807100**  
 Front panel, 12 modules  
 PC (UL 94 V-0)  
 light gray  
 8.17"x1.65"

Subject to technical modification without notice. © by OKW Gehäusesysteme, Buchen/Germany.