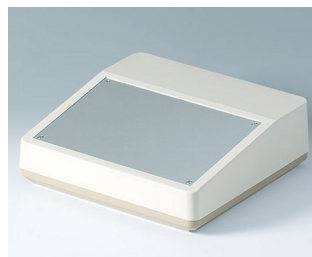
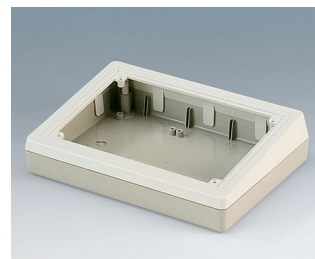


DESK CASES

Practical sloping front desktop enclosures

These plastic enclosures are suitable for indoor applications in many different fields of electronics. Choose a case that will fully meet your requirements in terms of size and inclination of the control panel.

- desk cases with inclined operating area
- suitable for numeric keypads and membrane keyboards
- useful range of five different models
- prepared for the assembly of eurocards 100 x 160 mm (types 138/190/190F/190H)
- front panel versions are available for the installation of complete prefabricated electronic assemblies
- connector mounting panel (types 220 & Combi F/H)
- version with attachment for digital readouts, measuring equipment, encoders etc. (Combi Desk Case H)
- protection class IP 40
- wall suspension element as accessory
- internal screw pillars for PCBs etc.



[View Customizing Options](#)

What do you still need for your own very personal product? We can supply enclosures and tuning knobs with all necessary modifications for fitting your electronic components.
Customizing options for Desk Cases

DESK CASES



Machining



Lacquering



Printing



Laser marking



Decor foils



Special material



RFI/EMI shielding



Installation / Assembly
of accessories

Select Versions



A0514007
DESK CASE 138
ABS (UL 94 HB)
off-white RAL 9002
5.43"x7.48"x2.13"



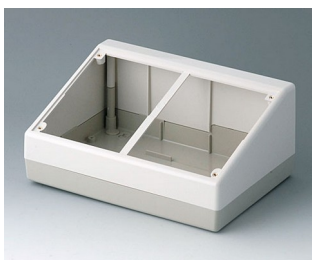
A0514009
DESK CASE 138
ABS (UL 94 HB)
black RAL 9005
5.43"x7.48"x2.13"



A0519007
DESK CASE 190
ABS (UL 94 HB)
off-white RAL 9002
7.48"x5.43"x1.85"



A0519009
DESK CASE 190
ABS (UL 94 HB)
black RAL 9005
7.48"x5.43"x1.85"



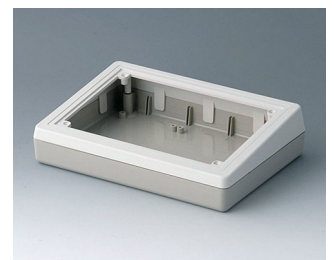
A9082065
DESK CASE 220
ABS (UL 94 HB)
off-white RAL 9002
8.66"x6.14"x3.94"



A9084165
COMBI DESK CASE F
ABS (UL 94 HB)
off-white RAL 9002
8.98"x8.50"x2.99"

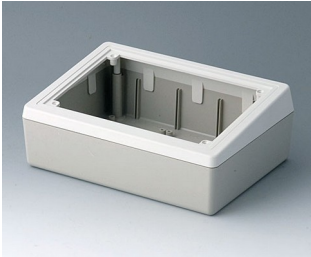


A9085165
COMBI DESK CASE H
ABS (UL 94 HB)
off-white RAL 9002
8.98"x8.50"x4.96"



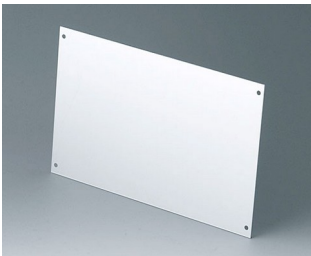
A9086265
DESK CASE 190 F
ABS (UL 94 HB)
pebble gray RAL 7032
7.48"x5.43"x1.85"

DESK CASES



A9086365
DESK CASE 190 H
ABS (UL 94 HB)
off-white RAL 9002
7.48"x5.43"x2.76"

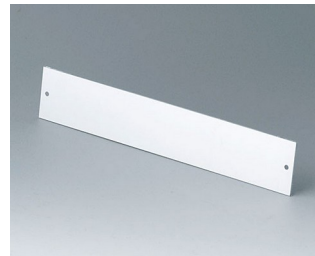
Accessory to complete



A9180001
Front panel 220
Aluminum
matt anodized
8.09"x5.09"x0.06"



A9184001
Front panel
Aluminum
matt anodized
7.87"x5.12"x0.06"



A9185001
Front panel
Aluminum
matt anodized
7.87"x1.38"x0.06"



A9186001
Front panel 190 F/H
Aluminum
matt anodized
6.36"x4.17"x0.06"

Accessory "wall/holder"



B1350048
Wall suspension elements
ABS (UL 94 HB)
pebble gray RAL 7032



B1360048
Wall suspension elements
ABS (UL 94 HB)
pebble gray RAL 7032

Accessory "screws"



A0306031
Self-tapping screws 0.118" x
0.236" (PZ1)

DESK CASES

Accessory



A9210290
Anti-slide feet 0.374" x 0.150"
transparent

Subject to technical modification without notice. © by OKW Gehäusesysteme, Buchen/Germany.