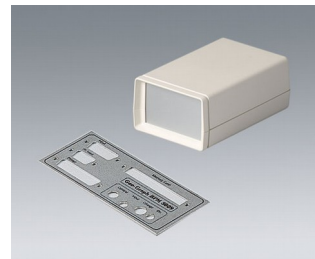
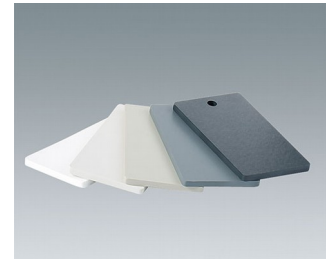
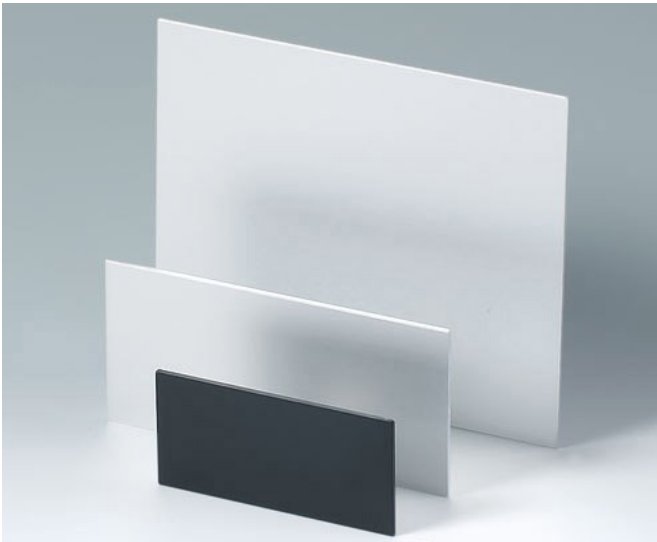


PLASTIC AND ALUMINUM PANELS

- panels made of polyamide, polystyrene and aluminum / panels made of anodized aluminum, each in different thicknesses (depending on the material)
- maximum blank size is 19.567" x 15.630"

The panels made of PA, PS or anodized aluminum are ideal as operating panels with/without electronics unit or special components. Anodized aluminum panels can be used, among other things, as front/rear panels or covers in the field of vision.



Subject to technical modification without notice. © by OKW Gehäusesysteme, Buchen/Germany.