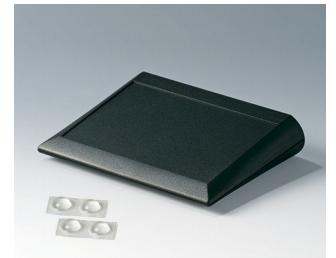


# TILT FOOT BAR, TILT FEET

- Tilt and swivel carry handle bars made of plastic and diecast zinc. With matching anodized aluminum profile, cut to the correct width for your enclosure, and supplied as a separate component.
- For small plastic enclosures we also offer a range of tilt foot bars which can be fitted anywhere on the base, and provide an ergonomic reading angle.



## View Customizing Options

What do you still need for your own very personal product? We can supply enclosures and tuning knobs with all necessary modifications for fitting your electronic components. Customizing options for Tilt foot bar, tilt feet



Machining



Printing



Laser marking



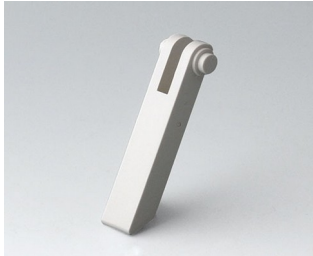
Special material



Installation / Assembly  
of accessories

# TILT FOOT BAR, TILT FEET

## Select Versions



**A0350007**  
 Tilt foot  
 ABS (UL 94 HB)  
 off-white RAL 9002



**A0350008**  
 Tilt foot  
 ABS (UL 94 HB)  
 pebble gray RAL 7032



**A9152057**  
 Tilt foot bar  
 ABS (UL 94 HB)  
 off-white RAL 9002



**A9152058**  
 Tilt foot bar  
 ABS (UL 94 HB)  
 lava



**A9152059**  
 Tilt foot bar  
 ABS (UL 94 HB)  
 black RAL 9005



**A9209229**  
 Anti-slide feet 0.335" x 0.087"  
 black



**A9210180**  
 Anti-slide feet 0.374" x 0.150"  
 transparent



**A9210290**  
 Anti-slide feet 0.374" x 0.150"  
 transparent



**A9212330**  
 Anti-slide feet 0.472" x 0.138"  
 transparent



**A9250807**  
 Tilt foot bar  
 ABS (UL 94 HB)  
 off-white RAL 9002



**A9250809**  
 Tilt foot bar  
 ABS (UL 94 HB)  
 black RAL 9005



**A9250817**  
 Tilt foot bar  
 ABS (UL 94 HB)  
 off-white RAL 9002



**A9250819**  
 Tilt foot bar  
 ABS (UL 94 HB)  
 black RAL 9005



**A9257105**  
 Case feet, Vers. I  
 ABS (UL 94 HB)  
 light gray RAL 7035



**A9257107**  
 Case feet, Vers. I  
 ABS (UL 94 HB)  
 off-white RAL 9002

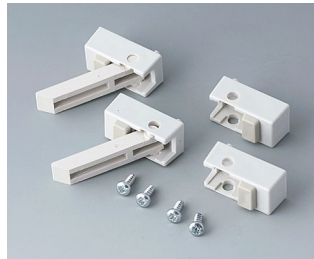


**A9257109**  
 Case feet, Vers. I  
 ABS (UL 94 HB)  
 black RAL 9005

# TILT FOOT BAR, TILT FEET



**A9257205**  
Case feet, Vers. II  
ABS (UL 94 HB)  
light gray RAL 7035



**A9257207**  
Case feet, Vers. II  
ABS (UL 94 HB)  
off-white RAL 9002



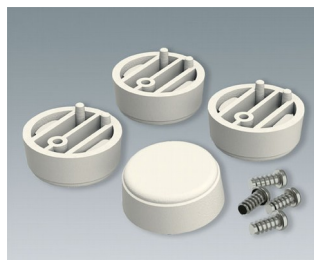
**A9257209**  
Case feet, Vers. II  
ABS (UL 94 HB)  
black RAL 9005



**A9257404**  
Case feet, Vers. I  
ABS (UL 94 HB)  
anthracite gray RAL 7016  
ø1.18"x0.47"



**A9257405**  
Case feet, Vers. I  
ABS (UL 94 HB)  
light gray RAL 7035  
ø1.18"x0.47"



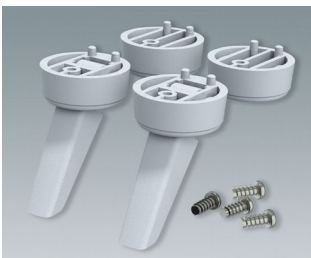
**A9257407**  
Case feet, Vers. I  
ABS (UL 94 HB)  
off-white RAL 9002  
ø1.18"x0.47"



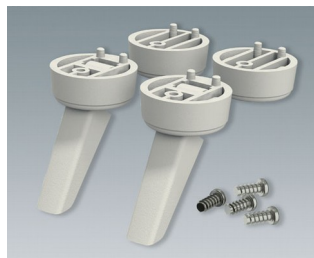
**A9257409**  
Case feet, Vers. I  
ABS (UL 94 HB)  
black RAL 9005  
ø1.18"x0.47"



**A9257504**  
Case feet, Vers. II  
ABS (UL 94 HB)  
anthracite gray RAL 7016  
ø1.18"x0.47"



**A9257505**  
Case feet, Vers. II  
ABS (UL 94 HB)  
light gray RAL 7035  
ø1.18"x0.47"



**A9257507**  
Case feet, Vers. II  
ABS (UL 94 HB)  
off-white RAL 9002  
ø1.18"x0.47"



**A9257509**  
Case feet, Vers. II  
ABS (UL 94 HB)  
black RAL 9005  
ø1.18"x0.47"

## Accessory



**A9207150**  
Anti-slide feet 0.256" x 0.079"  
transparent