

LACQUERING

The colors can be produced in our own mixing unit according to RAL and in a wide range of Pantone shades. This guarantees consistent high quality and short delivery times. The colors can also be defined according to your sample or by arrangement.

- **Lacquers in different degrees of lustre**

According to your needs, from matt to glossy. Matt lacquers prevent undesirable light reflections, and glossy lacquers offer a refined, modern look.

- **Metallic lacquer and color tones**

Finishes in a metallic look.

- **Soft-Touch**

Lacquer like artificial leather to improve the feel of your product. Soft-Touch lacquer gives your products a feel as soft as velvet, ensuring pleasantly reliable operation of handheld instruments, for example. NEW: transparent Soft-Touch lacquer.

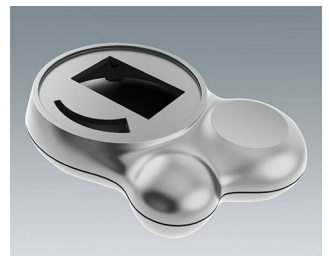
- **Antibacterial paint**

A special protective lacquer which prevents bacteria from settling and multiplying.

- **ESD conductive lacquer**

Special lacquer in black to prevent electrostatic discharges.

We will be pleased to advise you on the technical options available.



Subject to technical modification without notice. © by OKW Gehäusesysteme, Buchen/Germany.