

SYNERGY

Harmonious blend of materials

The new SYNERGY combines the advantages of plastic and aluminum in one single enclosure concept:

- a modern range of enclosures in 4 basic geometrical shapes – square, rectangular, circular and oval *** **iF product design award** ***
- 36 enclosure sizes, with plenty of room for the electronics and operating elements
- screw connection with stainless steel screws and Torx drive
- color combination: Aluminum, anodized in silver / plastic parts black
- plenty of space for interfaces, no inclined surfaces, easy assembly
- recessed surface in the top part for decor foils or membrane keyboards
- bottom part with opening and screw-down cover: practical for the use of a battery compartment or for access to the interior, e.g. for a memory card or batteries that are mounted directly on the PCB; battery compartment kit, battery clips for mounting on PCBs and button cell holder as accessories
- cable outlet in the bottom part (extra-flat network cable, round cable up to \varnothing 4 mm)
- battery compartment kit, wall suspension element and extender (for increasing the height of the domes) as accessories
- individual enclosure solutions on request

Designer Statement

"The special feature of SYNERGY is its high-quality appearance. Right from the very start, the main focus of development was the quality of the materials aluminum and plastic. The timeless basic geometric shapes, the discreetly contoured and trimmed operating panels, as well as the intelligent installation technology results in enclosures that meet the aesthetic demands of your customers. And since single elements can be individually processed in length, the variety of shapes, dimensions and functional variants has created an enormous spectrum of possibilities: altogether a high-quality business."

Martin Nußberger, polyform Industrie Design



SYNERGY

Applications and Examples

- Data systems engineering
- Network technology
- Building services systems
- Safety engineering
- Medical and therapeutic applications
- Measurement and control technology
- IoT/IIoT
- Gateways
- Sensors, optoelectronics



Access control system



Battery filler for aviation batteries



CO2 traffic light



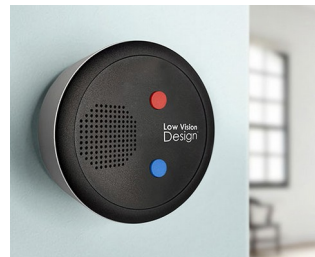
Electromagnetic impulse therapy with infrared light



Individual room control panels



Measuring system for creating metabolic profiles



Talking Thermostat



UHF RFID reader/writer



Ventilation system control



Wireless network access point

View Customizing Options

What do you still need for your own very personal product? We can supply enclosures and tuning knobs with all necessary modifications for fitting your electronic components. Customizing options for Synergy

SYNERGY



Machining



Printing



Laser marking



Decor foils



RFI/EMI shielding



Installation / Assembly
of accessories

Select Versions



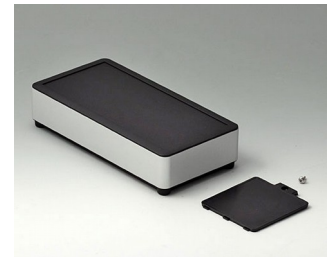
EE163059
SYNERGY E160
Aluminum AlMgSi 0.5
matt anodized
6.30"x3.15"x1.57"
IP 40



EE166059
SYNERGY E160
Aluminum AlMgSi 0.5
matt anodized
6.30"x3.15"x2.76"
IP 40



EE169059
SYNERGY E160
Aluminum AlMgSi 0.5
matt anodized
6.30"x3.15"x3.94"
IP 40



EE183059
SYNERGY E180
Aluminum AlMgSi 0.5
matt anodized
7.09"x3.54"x1.57"
IP 40



EE186059
SYNERGY E180
Aluminum AlMgSi 0.5
matt anodized
7.09"x3.54"x2.76"
IP 40



EE189059
SYNERGY E180
Aluminum AlMgSi 0.5
matt anodized
7.09"x3.54"x3.94"
IP 40



EE203059
SYNERGY E200
Aluminum AlMgSi 0.5
matt anodized
7.87"x3.94"x1.57"
IP 40



EE206059
SYNERGY E200
Aluminum AlMgSi 0.5
matt anodized
7.87"x3.94"x2.76"
IP 40

SYNERGY



EE209059
SYNERGY E200
Aluminum AlMgSi 0.5
matt anodized
7.87"x3.94"x3.94"
IP 40



EO163059
SYNERGY O160
Aluminum AlMgSi 0.5
matt anodized
6.30"x3.15"x1.57"
IP 40



EO166059
SYNERGY O160
Aluminum AlMgSi 0.5
matt anodized
6.30"x3.15"x2.76"
IP 40



EO169059
SYNERGY O160
Aluminum AlMgSi 0.5
matt anodized
6.30"x3.15"x3.94"
IP 40



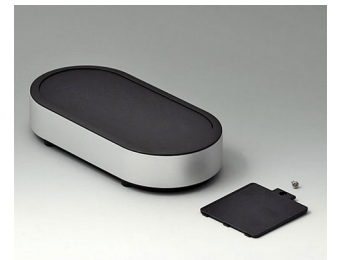
EO183059
SYNERGY O180
Aluminum AlMgSi 0.5
matt anodized
7.09"x3.54"x1.57"
IP 40



EO186059
SYNERGY O180
Aluminum AlMgSi 0.5
matt anodized
7.09"x3.54"x2.76"
IP 40



EO189059
SYNERGY O180
Aluminum AlMgSi 0.5
matt anodized
7.09"x3.54"x3.94"
IP 40



EO203059
SYNERGY O200
Aluminum AlMgSi 0.5
matt anodized
7.87"x3.94"x1.57"
IP 40



EO206059
SYNERGY O200
Aluminum AlMgSi 0.5
matt anodized
7.87"x3.94"x2.76"
IP 40



EO209059
SYNERGY O200
Aluminum AlMgSi 0.5
matt anodized
7.87"x3.94"x3.94"
IP 40



ER103059
SYNERGY R100
Aluminum AlMgSi 0.5
matt anodized
ø3.94"x1.57"
IP 40



ER106059
SYNERGY R100
Aluminum AlMgSi 0.5
matt anodized
ø3.94"x2.76"
IP 40



ER109059
SYNERGY R100
Aluminum AlMgSi 0.5
matt anodized
ø3.94"x3.94"
IP 40



ER123059
SYNERGY R120
Aluminum AlMgSi 0.5
matt anodized
ø4.72"x1.57"
IP 40



ER126059
SYNERGY R120
Aluminum AlMgSi 0.5
matt anodized
ø4.72"x2.76"
IP 40



ER129059
SYNERGY R120
Aluminum AlMgSi 0.5
matt anodized
ø4.72"x3.94"
IP 40

SYNERGY



ER143059
SYNERGY R140
Aluminum AlMgSi 0.5
matt anodized
ø5.51"x1.57"
IP 40



ER146059
SYNERGY R140
Aluminum AlMgSi 0.5
matt anodized
ø5.51"x2.76"
IP 40



ER149059
SYNERGY R140
Aluminum AlMgSi 0.5
matt anodized
ø5.51"x3.94"
IP 40



ES103059
SYNERGY S100
Aluminum AlMgSi 0.5
matt anodized
3.94"x3.94"x1.57"
IP 40



ES106059
SYNERGY S100
Aluminum AlMgSi 0.5
matt anodized
3.94"x3.94"x2.76"
IP 40



ES109059
SYNERGY S100
Aluminum AlMgSi 0.5
matt anodized
3.94"x3.94"x3.94"
IP 40



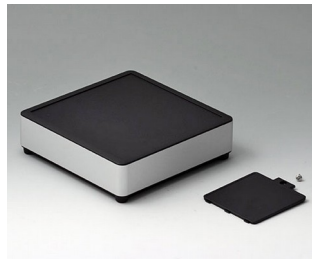
ES123059
SYNERGY S120
Aluminum AlMgSi 0.5
matt anodized
4.72"x4.72"x1.57"
IP 40



ES126059
SYNERGY S120
Aluminum AlMgSi 0.5
matt anodized
4.72"x4.72"x2.76"
IP 40



ES129059
SYNERGY S120
Aluminum AlMgSi 0.5
matt anodized
4.72"x4.72"x3.94"
IP 40



ES143059
SYNERGY S140
Aluminum AlMgSi 0.5
matt anodized
5.51"x5.51"x1.57"
IP 40



ES146059
SYNERGY S140
Aluminum AlMgSi 0.5
matt anodized
5.51"x5.51"x2.76"
IP 40



ES149059
SYNERGY S140
Aluminum AlMgSi 0.5
matt anodized
5.51"x5.51"x3.94"
IP 40

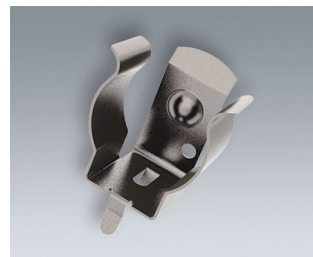
Accessory "battery"



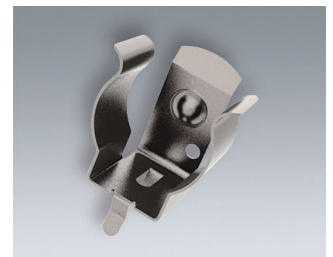
A9193033
Polarity reversal protection
device, positive terminal AA
ABS (UL 94 HB)
off-white RAL 9002



A9193034
Polarity reversal protection
device, positive terminal AAA
ABS (UL 94 HB)
off-white RAL 9002

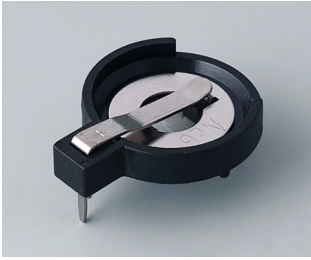


A9193035
Battery clip, AA
Steel
nickel-plated



A9193036
Battery clip, AAA
Steel
nickel-plated

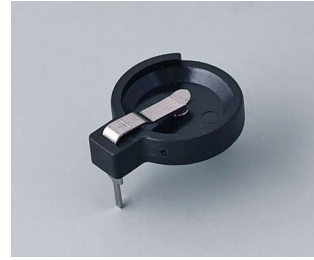
SYNERGY



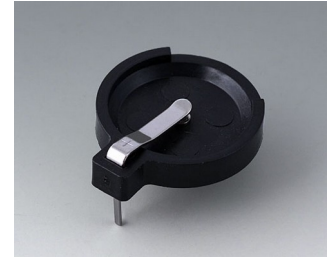
A9193037
Button cell holder, Ø 0.787"



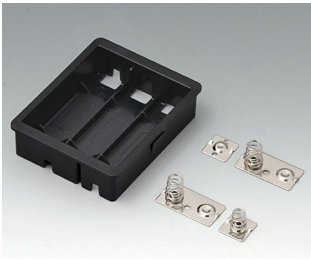
A9193038
Button cell holder, Ø 0.906"



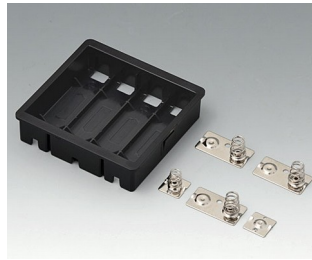
A9193039
Button cell holder, Ø 0.472"



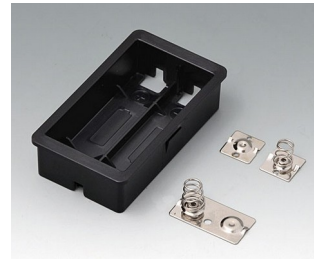
A9193040
Button cell holder, Ø 0.630"



EZ040609
Battery compartment, 3 x AA
ASA+PC (UL 94 V-0)
black RAL 9005

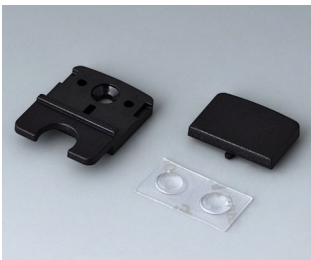


EZ050609
Battery compartment, 4 x AA
ASA+PC (UL 94 V-0)
black RAL 9005



EZ060609
Battery compartment, 2 x AA
ASA+PC (UL 94 V-0)
black RAL 9005

Accessory "wall/holder"



EZ030109
Wall suspension element
ASA+PC (UL 94 V-0)
black RAL 9005

Accessory "screws"



A0305031
Self-tapping screws 0.098" x
0.236" (PZ1)



A0399T10
Torx T10 screwdriver



EZ031209
Extender kit
ASA+PC (UL 94 V-0)
black RAL 9005

Subject to technical modification without notice. © by OKW Gehäusesysteme, Buchen/Germany.