

SMART-TERMINAL

Sophisticated aluminum profile enclosures for central control units

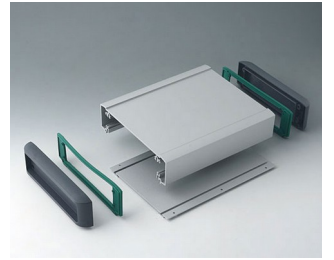
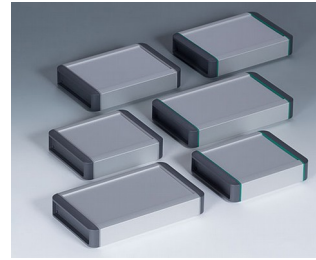
Our new SMART-TERMINAL aluminum profile enclosures feature a highly quality matt anodized finish. These robust, elegant and highly attractive cases offer plenty of space for large-volume electronic assemblies, for example touch screens, display modules, PCBs etc. A variety of technical advantages, individual profile lengths on request, and creative designer options make the SMART-TERMINAL the last word in excellence for tough industrial display enclosures.

- 3 basic enclosures in the profile lengths 6.299", 7.874" and 9.449" (overall enclosure length with end covers + 1.654" or with end plate + 0.157"), width 6.693", height 1.969"
- side covers in lava (similar to anthracite) moulded in high-quality ASA+PC-FR plastic
- designer seals made of TPV material in volcano or green
- optionally available with a simple aluminium plate as a lateral end plate
- highly versatile design can be used as table-top, sloping front and wall-mounted enclosures
- recessed area in top for the installation and protection of displays, membrane keypads and operating elements
(SMART-TERMINAL 160: 5.7"/14 cm; SMART-TERMINAL 200 and 240: 7"/17.8 cm)
- horizontal PCB guides and screw channels inside the enclosure
- two-part aluminum profile facilitates the assembly of the enclosure and installation of the components, with no visible fixing screws
- flat areas for easy installation of the interfaces
- side covers with recessed area to protect the cables and connectors
- optional accessories: wall suspension element, case canting kit for an ergonomic reading angle of 12°, set of square-head nuts for PCB mounting

Special sizes and versions

- individual profile lengths to customer specification - please ask for a quote
- on request, designer seals and covers in other colors as creative/visual features, minimum order quantity 200 pcs
- Bracket according to VESA standard for the SMART-TERMINAL on request

SMART-TERMINAL



SMART-TERMINAL

Applications and Examples

- Peripheral and interface equipment
- Office
- Communications technology
- Safety engineering
- Biometrics
- Medical and laboratory technology
- Health care
- Automation
- Smart Factory
- Industry 4.0
- Gateways
- Measurement and control engineering



Industrial Secure Gateway



Information terminal at the point of sale



ISOBUS terminal for tractors and self-propelled machines



Logistics terminal



Machine real-time monitoring system



Mobile diagnostic device for machines and plants



Multi-touch panel for machine control



Plant research terminal



Process control of plants



Smart meter for wind power and solar systems



Surveillance monitor for vital signs



Testing of electronic components

View Customizing Options

What do you still need for your own very personal product? We can supply enclosures and tuning knobs with all necessary modifications for fitting your electronic components.
Customizing options for Smart-Terminal

SMART-TERMINAL



Machining



Lacquering



Printing



Laser marking



Decor foils



RFI/EMI shielding



Installation / Assembly
of accessories

Select Versions



B3407011
SMART-TERMINAL 160
Aluminum AlMgSi 0.5
matt anodized
7.95"x6.69"x1.97"
IP 54



B3407012
SMART-TERMINAL 160
Aluminum AlMgSi 0.5
matt anodized
7.95"x6.69"x1.97"
IP 54



B3407013
SMART-TERMINAL 160
Aluminum AlMgSi 0.5
matt anodized
6.46"x6.69"x1.97"



B3407021
SMART-TERMINAL 200
Aluminum AlMgSi 0.5
matt anodized
9.53"x6.69"x1.97"
IP 54



B3407022
SMART-TERMINAL 200
Aluminum AlMgSi 0.5
matt anodized
9.53"x6.69"x1.97"
IP 54



B3407023
SMART-TERMINAL 200
Aluminum AlMgSi 0.5
matt anodized
8.03"x6.69"x1.97"



B3407031
SMART-TERMINAL 240
Aluminum AlMgSi 0.5
matt anodized
11.10"x6.69"x1.97"
IP 54

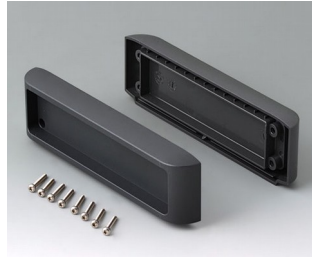


B3407032
SMART-TERMINAL 240
Aluminum AlMgSi 0.5
matt anodized
11.10"x6.69"x1.97"
IP 54

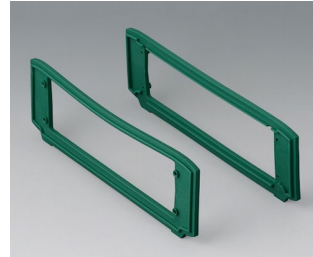
SMART-TERMINAL



B3407033
 SMART-TERMINAL 240
 Aluminum AlMgSi 0.5
 matt anodized
 9.61"x6.69"x1.97"



B3507011
 Side covers set
 ASA+PC (UL 94 V-0)
 lava



B3507016
 Designer seals set, green
 TPV 50A
 green

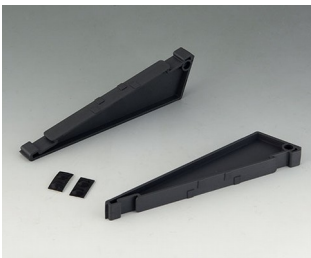


B3507017
 Designer seals set, volcano
 TPV 50A
 volcano



B3507025
 Aluminum end plate
 Aluminum
 matt anodized

Accessory "station"



B3507030
 Case canting kit
 ASA+PC (UL 94 V-0)
 lava

Accessory "wall/holder"



B3507020
 Wall suspension element
 Aluminum

SMART-TERMINAL

Accessory "screws"



A0330080
Screw M3 x 3.150" (T10)
Stainless steel



A0399T10
Torx T10 screwdriver



B3500001
Set of M3 square-head nuts
Steel

Accessory



A9209229
Anti-slide feet 0.335" x 0.087"
black

Subject to technical modification without notice. © by OKW Gehäusesysteme, Buchen/Germany.